



# NGAL Rabbit mAb

<b>Catalog No</b>	YP-rAb-17254
<b>Isotype</b>	IgG
<b>Reactivity</b>	Mouse,Rat
<b>Applications</b>	WB,IHC,IF,ELISA
<b>Gene Name</b>	LCN2 HNL NGAL
<b>Protein Name</b>	NGAL
<b>Purification Process</b>	Protein A
<b>Specificity</b>	Endogenous
<b>Formulation</b>	PBS, 50% glycerol, 0.05% Proclin 300, 0.05%BSA
<b>Source</b>	Monoclonal, Rabbit,IgG
<b>Dilution</b>	IHC 1:200-1:1000; WB 1:2000-1:10000; IF 1:200-1:1000; ELISA 1:5000-1:20000; Note: For IHC, we suggest antigen retrieval with TE buffer pH 9.0
<b>Concentration</b>	0.5 mg/ml
<b>Purity</b>	≥90%
<b>Storage Stability</b>	-15° C to -25° C/1 year(Do not lower than -25° C)
<b>Synonyms</b>	Neutrophil gelatinase-associated lipocalin ; NGAL ; 25 kDa alpha-2-microglobulin-related subunit of MMP-9 ; Lipocalin-2 ; Oncogene 24p3 ; Siderocalin LCN2 ; p25 ;
<b>Observed Band</b>	23kD
<b>Calculated Molecular Weight</b>	23kD
<b>Cell Pathway</b>	Secreted . Cytoplasmic granule lumen . Cytoplasmic vesicle lumen . Upon binding to the SLC22A17 (24p3R) receptor, it is internalized (By similarity). Releases the bound iron in the acidic lumen of cytoplasmic vesicles (PubMed:12453413, PubMed:20581821). .
<b>Tissue Specificity</b>	Detected in neutrophils (at protein level) (PubMed:7683678, PubMed:8298140). Expressed in bone marrow and in tissues that are prone to exposure to microorganism. High expression is found in bone marrow as well as in uterus, prostate, salivary gland, stomach, appendix, colon, trachea and lung. Not found in the small intestine or peripheral blood leukocytes.
<b>Function</b>	Transport of small lipophilic substances .,similarity:Belongs to the calycin superfamily. Lipocalin family.,subunit:Forms a covalently linked, disulfide-bridged heterodimer with the 92 kDa type V collagenase (MMP-9).,tissue specificity:Expressed in bone marrow and in tissues that are prone to exposure to microorganism. High expression is found in bone marrow as well as in uterus,





prostate, salivary gland, stomach, appendix, colon, trachea and lungs. Not found in the small intestine or peripheral blood leukocytes.,

### Background

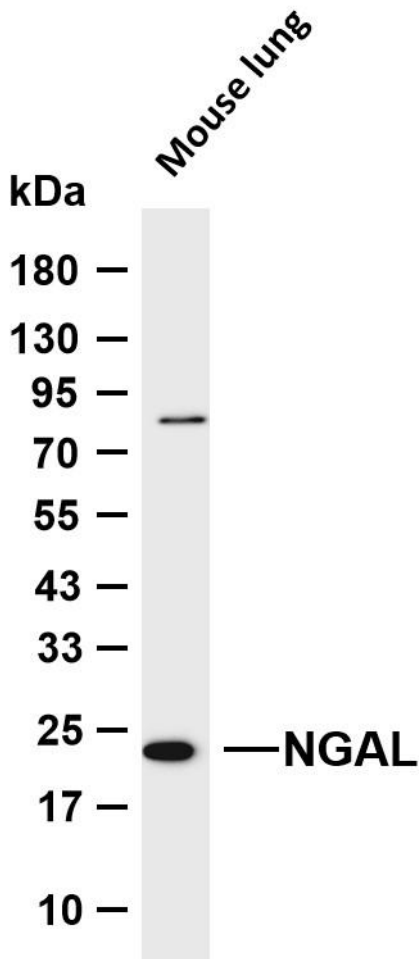
This gene encodes a protein that belongs to the lipocalin family. Members of this family transport small hydrophobic molecules such as lipids, steroid hormones and retinoids. The protein encoded by this gene is a neutrophil gelatinase-associated lipocalin and plays a role in innate immunity by limiting bacterial growth as a result of sequestering iron-containing siderophores. The presence of this protein in blood and urine is an early biomarker of acute kidney injury. This protein is thought to be involved in multiple cellular processes, including maintenance of skin homeostasis, and suppression of invasiveness and metastasis. Mice lacking this gene are more susceptible to bacterial infection than wild type mice. [provided by RefSeq, Sep 2015],

### matters needing attention

Avoid repeated freezing and thawing!

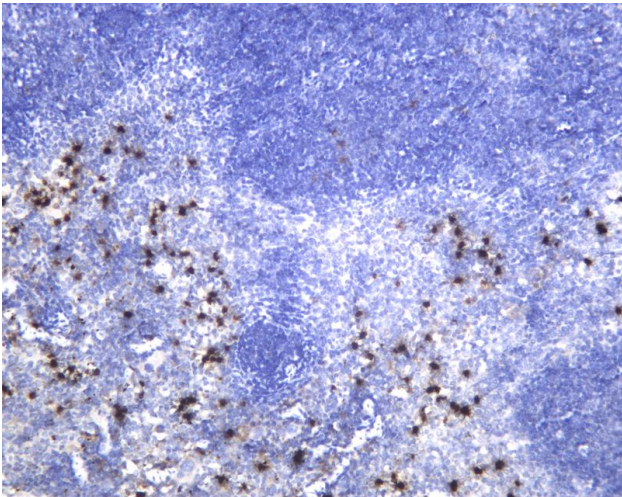
### Usage suggestions

This product can be used in immunological reaction related experiments. For more information, please consult technical personnel.

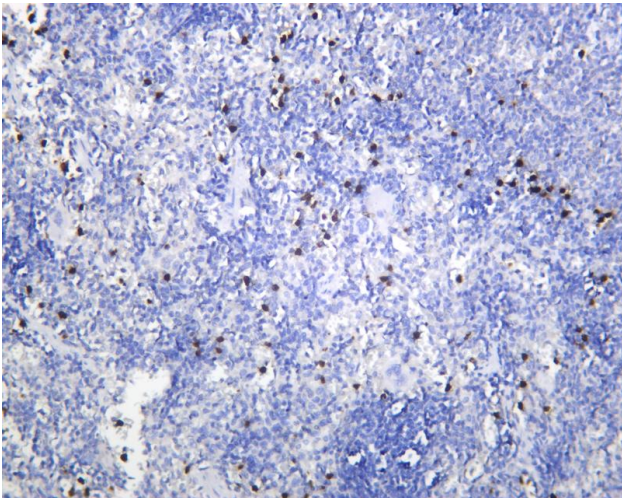


Various whole cell lysates were separated by 4-20% SDS-PAGE, and the membrane was blotted with anti-NGAL antibody. The HRP-conjugated Goat anti-Rabbit IgG (H + L) antibody was used to detect the antibody. Lane 1: Mouse lung Predicted band size: 23kDa Observed band size: 23kDa





Mouse spleen was stained with anti-NGAL Rabbit antibody



Rat spleen was stained with anti-NGAL Rabbit antibody

