



Syntenin Rabbit mAb

Catalog No	YP-rAb-17242
Isotype	IgG
Reactivity	Human
Applications	WB,IF,IP,ELISA
Gene Name	SDCBP MDA9 SYCL
Protein Name	syntenin
Purification Process	Protein A
Specificity	Endogenous
Formulation	PBS, 50% glycerol, 0.05% Proclin 300, 0.05%BSA
Source	Monoclonal, Rabbit,IgG
Dilution	WB 1:2000-1:10000; IF 1:200-1:1000; ELISA 1:5000-1:20000; IP 1:50-1:200;
Concentration	0.5 mg/ml
Purity	≥90%
Storage Stability	-15° C to -25° C/1 year(Do not lower than -25° C)
Synonyms	Syntenin-1 ; Melanoma differentiation-associated protein 9 ; MDA-9 ; Pro-TGF-alpha cytoplasmic domain-interacting protein 18 ; TACIP18 ; Scaffold protein Pbp1 ; Syndecan-binding protein 1 ;
Observed Band	32kD
Calculated Molecular Weight	32kD
Cell Pathway	Cell junction, focal adhesion . Cell junction, adherens junction . Cell membrane ; Peripheral membrane protein . Endoplasmic reticulum membrane ; Peripheral membrane protein . Nucleus . Melanosome . Cytoplasm, cytosol . Cytoplasm, cytoskeleton . Secreted, extracellular exosome . Membrane raft . Mainly membrane-associated. Localized to adherens junctions, focal adhesions and endoplasmic reticulum. Colocalized with actin stress fibers. Also found in the nucleus. Identified by mass spectrometry in melanosome fractions from stage I to stage IV. Associated to the plasma membrane in the presence of FZD7 and phosphatidylinositol 4,5-bisphosphate (PIP2) (PubMed:27386966). .
Tissue Specificity	Expressed in lung cancers, including adenocarcinoma, squamous cell carcinoma and small-cell carcinoma (at protein level) (PubMed:25893292). Widely expressed. Expressed in fetal kidney, liver, lung and brain. In adult highest expression in heart and placenta.
Function	Seems to function as an adapter protein. In adherens junctions may function to couple syndecans to cytoskeletal proteins or signaling components. Seems to

杭州臻优品生物科技有限公司

热销产品:

蛋白、一抗、抗体对、ELISA试剂盒、生化试剂盒
CCK8试剂盒、QPCR检测试剂盒

检测服务:

ELISA检测及定制服务 | 生化检测 | PCR、QPCR检测 | WB检测
ICO-IP检测 | 切片 | 染色 | 免疫组化 | 免疫荧光 | 透射电镜全套
| 宏基因组、转录组、基因组、蛋白组、代谢组测序



关注官网



关注客服



couple transcription factor SOX4 to the IL-5 receptor (IL5RA). May also play a role in vesicular trafficking. Seems to be required for the targeting of TGFA to the cell surface in the early secretory pathway.,induction:By gamma interferon in melanoma cells.,PTM:Phosphorylated on tyrosine residues.,similarity:Contains 2 PDZ (DHR) domains.,subcellular location:Mainly membrane-associated. Localized to adherens junctions, focal adhesions and endoplasmic reticulum. Colocalized with actin stress fibers. Also found in the nucleus. Identified by mass spectrometry in melanosome fractions from stage I to stage IV.,subunit:Monomer and homodimer (By similarity). Interacts with SDC1, SDC2, SDC3, SDC4, NRXN2, EPHA7, EPHB1, NF2 isoform 1, TGFA and IL5RA. Interacts with neurofascin, SDCBP2 and PTPRJ.,tissue specificity:Widely expressed. Expressed in fetal kidney, liver, lung and brain. In adult highest expression in heart and placenta.,

Background

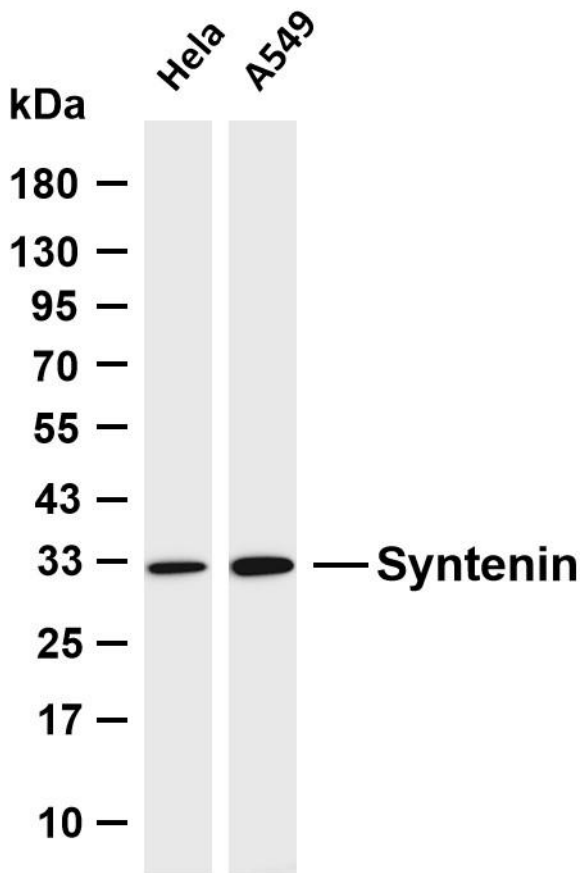
syndecan binding protein(SDCBP) Homo sapiens The protein encoded by this gene was initially identified as a molecule linking syndecan-mediated signaling to the cytoskeleton. The syntenin protein contains tandemly repeated PDZ domains that bind the cytoplasmic, C-terminal domains of a variety of transmembrane proteins. This protein may also affect cytoskeletal-membrane organization, cell adhesion, protein trafficking, and the activation of transcription factors. The protein is primarily localized to membrane-associated adherens junctions and focal adhesions but is also found at the endoplasmic reticulum and nucleus. Alternative splicing results in multiple transcript variants encoding different isoforms. [provided by RefSeq, Jul 2008],

matters needing attention

Avoid repeated freezing and thawing!

Usage suggestions

This product can be used in immunological reaction related experiments. For more information, please consult technical personnel.



Various whole cell lysates were separated by 4-20% SDS-PAGE, and the membrane was blotted with anti-Syntenin antibody. The HRP-conjugated Goat anti-Rabbit IgG (H + L) antibody was used to detect the antibody. Lane 1: HeLa Lane 2: A549 Predicted band size: 32kDa Observed band size: 32kDa

