



Rho A/B/C Rabbit mAb

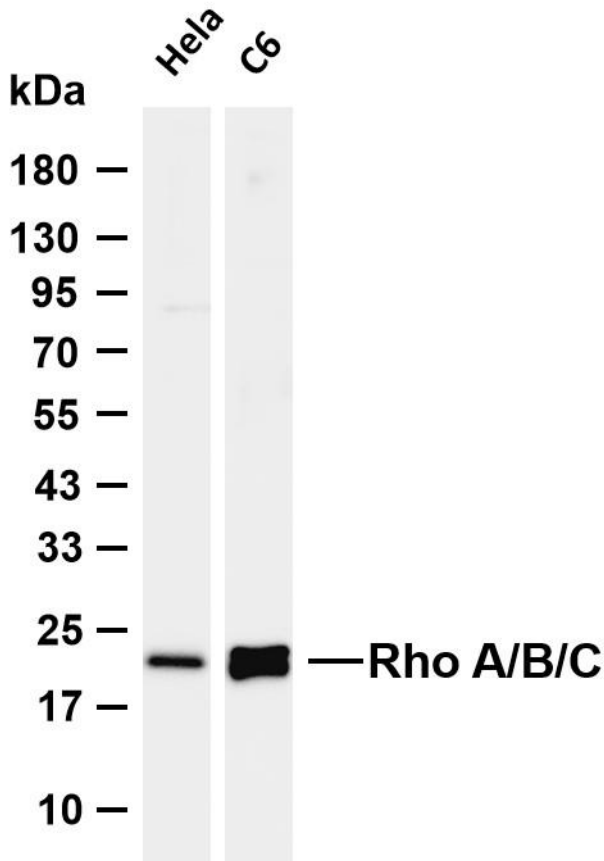
Catalog No	YP-rAb-17232
Isotype	IgG
Reactivity	Human,Mouse,Rat
Applications	WB,IHC,IF,ELISA
Gene Name	RHOA/B/C
Protein Name	
Purification Process	Protein A
Specificity	Endogenous
Formulation	PBS, 50% glycerol, 0.05% Proclin 300, 0.05%BSA
Source	Monoclonal, Rabbit,IgG
Dilution	IHC 1:200-1:1000; WB 1:2000-1:10000; IF 1:200-1:1000; ELISA 1:5000-1:20000; Note: For IHC, we suggest antigen retrieval with TE buffer pH 9.0
Concentration	0.5 mg/ml
Purity	≥90%
Storage Stability	-15° C to -25° C/1 year(Do not lower than -25° C)
Synonyms	Rho A/B/C ; h12/h6/h9 ; Rho cDNA clone 12/6/9 ; Rho cDNA clone 12/Rho cDNA clone 6/Rho cDNA clone 9 ;
Observed Band	22kD
Calculated Molecular Weight	22kD
Cell Pathway	
Tissue Specificity	
Function	
Background	Predicted to enable GTP binding activity and GTPase activity. Involved in several processes, including cellular response to hydrogen peroxide; cellular response to ionizing radiation; and regulation of cell migration. Located in cleavage furrow and endosome membrane. Biomarker of breast cancer. [provided by Alliance of Genome Resources, Jul 2025]
matters needing attention	Avoid repeated freezing and thawing!





Usage suggestions

This product can be used in immunological reaction related experiments. For more information, please consult technical personnel.



Various whole cell lysates were separated by 4-20% SDS-PAGE, and the membrane was blotted with anti-Rho A/B/C antibody. The HRP-conjugated Goat anti-Rabbit IgG (H + L) antibody was used to detect the antibody. Lane 1: HeLa Lane 2: C6 Predicted band size: 22kDa Observed band size: 22kDa

