



SNAP 25 Rabbit mAb

Catalog No	YP-rAb-17228
Isotype	IgG
Reactivity	Human,Mouse,Rat
Applications	WB,IHC,IF,IP,ELISA
Gene Name	SNAP-25
Protein Name	Synaptosomal-associated protein 25
Purification Process	Protein A
Specificity	Endogenous
Formulation	PBS, 50% glycerol, 0.05% Proclin 300, 0.05%BSA
Source	Monoclonal, Rabbit,IgG
Dilution	IHC 1:200-1:1000; WB 1:2000-1:10000; IF 1:200-1:1000; ELISA 1:5000-1:20000; IP 1:50-1:200; Note: For IHC, we suggest antigen retrieval with TE buffer pH 9.0
Concentration	0.5 mg/ml
Purity	≥90%
Storage Stability	-15° C to -25° C/1 year(Do not lower than -25° C)
Synonyms	SNAP25 ; SNAP ; Synaptosomal-associated protein 25 ; SNAP-25 ; Super protein ; SUP ; Synaptosomal-associated 25 kDa protein
Observed Band	25kD
Calculated Molecular Weight	23kD
Cell Pathway	Cytoplasm, perinuclear region . Cell membrane ; Lipid-anchor . Cell junction, synapse, synaptosome . Photoreceptor inner segment . Membrane association requires palmitoylation. Expressed throughout cytoplasm, concentrating at the perinuclear region. Colocalizes with KCNB1 at the cell membrane (By similarity). Colocalizes with PLCL1 at the cell membrane (By similarity) .
Tissue Specificity	Neurons of the neocortex, hippocampus, piriform cortex, anterior thalamic nuclei, pontine nuclei, and granule cells of the cerebellum.
Function	Alternative products:Isoforms differ by the usage of two alternative homologous exons (5a and 5b) which encode for positions 56 to 94 and differ only in 9 positions out of 39,Function:t-SNARE involved in the molecular regulation of neurotransmitter release. May play an important role in the synaptic function of specific neuronal systems. Associates with proteins involved in vesicle docking and membrane fusion. Regulates plasma membrane recycling through its interaction with CENPF.,miscellaneous:When cloned and expressed in Eschericia coli, where protein palmitoylation does not occur, Cys-85, Cys-88, Cys-90 and Cys-92 in the protein sequence readily form an iron-sulfur cluster

杭州臻优品生物科技有限公司

热销产品:

蛋白、一抗、抗体对、ELISA试剂盒、生化试剂盒
CCK8试剂盒、QPCR检测试剂盒

检测服务:

ELISA检测及定制服务 | 生化检测 | PCR、QPCR检测 | WB检测
ICO-IP检测 | 切片 | 染色 | 免疫组化 | 免疫荧光 | 透射电镜全套
| 宏基因组、转录组、基因组、蛋白组、代谢组测序



关注官网



关注客服



instead.,PTM:Palmitoylated. Cys-85 appears to be the main site, and palmitoylation is required for membrane association.,similarity:Belongs to the SNAP-25 family.,similarity:Contains 2 t-SNARE coiled-coil homology domains.,subcellular location:Membrane association requires palmitoylation. Expressed throughout cytoplasm, concentrating at the perinuclear region.,subunit:Part of the SNARE core complex containing SNAP25, VAMP2 and STX1A. This complex binds CPLX1. Interacts with CENPF, TRIM9, RIMS1, SNAP25BP, OTOF and HGS. Binds STXBP6. Found in a ternary complex with STX1A and VAMP8. Found in a complex containing SYT1, SV2B and syntaxin-1.,tissue specificity:Neurons of the neocortex, hippocampus, piriform cortex, anterior thalamic nuclei, pontine nuclei, and granule cells of the cerebellum.,

Background

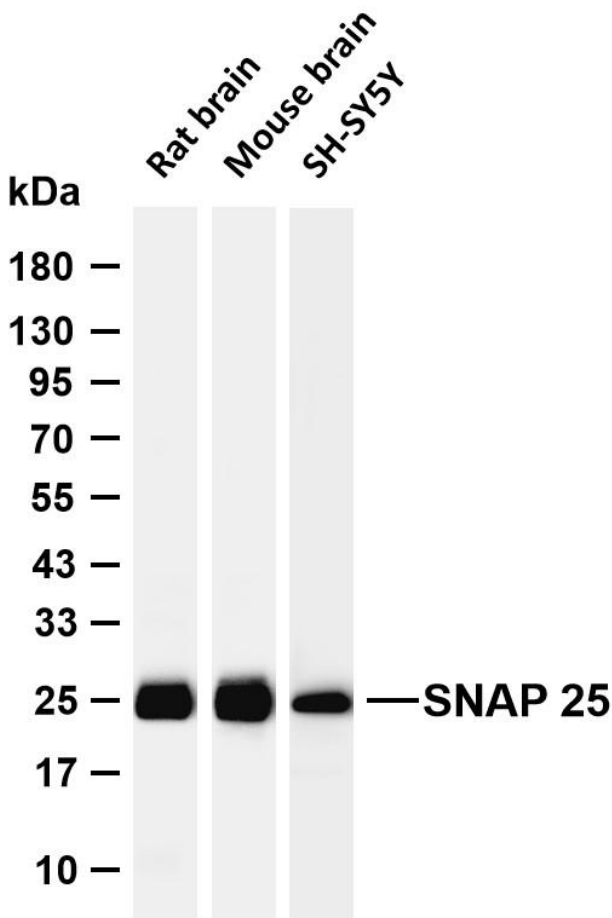
Synaptic vesicle membrane docking and fusion is mediated by SNAREs (soluble N-ethylmaleimide-sensitive factor attachment protein receptors) located on the vesicle membrane (v-SNAREs) and the target membrane (t-SNAREs). The assembled v-SNARE/t-SNARE complex consists of a bundle of four helices, one of which is supplied by v-SNARE and the other three by t-SNARE. For t-SNAREs on the plasma membrane, the protein syntaxin supplies one helix and the protein encoded by this gene contributes the other two. Therefore, this gene product is a presynaptic plasma membrane protein involved in the regulation of neurotransmitter release. Two alternative transcript variants encoding different protein isoforms have been described for this gene. [provided by RefSeq, Jul 2008],

matters needing attention

Avoid repeated freezing and thawing!

Usage suggestions

This product can be used in immunological reaction related experiments. For more information, please consult technical personnel.



Various whole cell lysates were separated by 4-20% SDS-PAGE, and the membrane was blotted with anti-SNAP 25 antibody. The HRP-conjugated Goat anti-Rabbit IgG (H + L) antibody was used to detect the antibody. Lane 1: Rat brain Lane 2: Mouse brain Lane 3: SH-SY5Y Predicted band size: 23kDa Observed band size: 25kDa

杭州臻优品生物科技有限公司

热销产品:

蛋白、一抗、抗体对、ELISA试剂盒、生化试剂盒
CCK8试剂盒、QPCR检测试剂盒

检测服务:

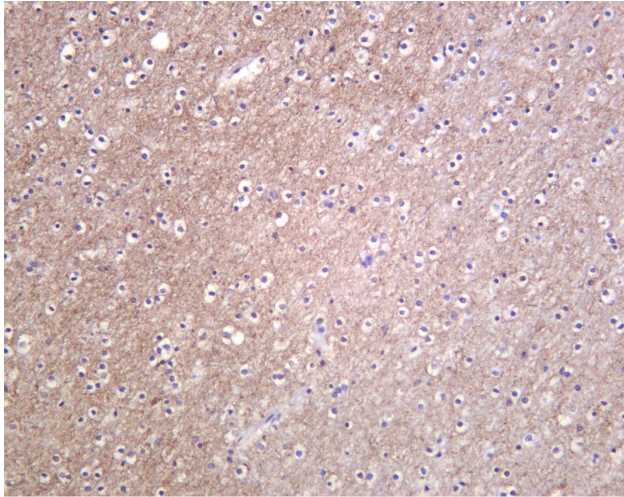
ELISA检测及定制服务 | 生化检测 | PCR、QPCR检测 | WB检测
ICO-IP检测 | 切片 | 染色 | 免疫组化 | 免疫荧光 | 透射电镜全套
| 宏基因组、转录组、基因组、蛋白组、代谢组测序



关注官网



关注客服



Human brain was stained with anti-SNAP 25 Rabbit antibody

杭州臻优品生物科技有限公司

热销产品:

蛋白、一抗、抗体对、ELISA试剂盒、生化试剂盒
CCK8试剂盒、QPCR检测试剂盒

检测服务:

ELISA检测及定制服务 | 生化检测 | PCR、QPCR检测 | WB检测
ICO-IP检测 | 切片 | 染色 | 免疫组化 | 免疫荧光 | 透射电镜全套
| 宏基因组、转录组、基因组、蛋白组、代谢组测序



关注官网



关注客服