



# Gab 1 Rabbit mAb

<b>Catalog No</b>	YP-rAb-17227
<b>Isotype</b>	IgG
<b>Reactivity</b>	Human
<b>Applications</b>	WB,IF,IP,ELISA
<b>Gene Name</b>	GAB1
<b>Protein Name</b>	GRB2-associated-binding protein 1
<b>Purification Process</b>	Protein A
<b>Specificity</b>	Endogenous
<b>Formulation</b>	PBS, 50% glycerol, 0.05% Proclin 300, 0.05%BSA
<b>Source</b>	Monoclonal, Rabbit,IgG
<b>Dilution</b>	WB 1:2000-1:10000; IF 1:200-1:1000; ELISA 1:5000-1:20000; IP 1:50-1:200;
<b>Concentration</b>	0.5 mg/ml
<b>Purity</b>	≥90%
<b>Storage Stability</b>	-15° C to -25° C/1 year(Do not lower than -25° C)
<b>Synonyms</b>	GAB1 ; GRB2-associated-binding protein 1 ; GRB2-associated binder 1 ; Growth factor receptor bound protein 2-associated protein 1
<b>Observed Band</b>	110kD
<b>Calculated Molecular Weight</b>	77kD
<b>Cell Pathway</b>	cytosol,
<b>Tissue Specificity</b>	Testis,Whole embryo,
<b>Function</b>	Probably involved in EGF and insulin receptor signaling.,PTM:Phosphorylated on tyrosine residue(s) by the epidermal growth factor receptor (EGFR) and the insulin receptor (INSR). Tyrosine phosphorylation of GAB1 mediates interaction with several proteins that contain SH2 domains.,similarity:Belongs to the GAB family.,similarity:Contains 1 PH domain.,subunit:Interacts with GRB2 and with other SH2-containing proteins. Interacts with phosphorylated LAT2.,
<b>Background</b>	GRB2 associated binding protein 1(GAB1) Homo sapiens The protein encoded by this gene is a member of the IRS1-like multisubstrate docking protein family. It is an important mediator of branching tubulogenesis and plays a central role in cellular growth response, transformation and apoptosis. Two transcript variants encoding different isoforms have been found for this gene. [provided by RefSeq, Aug 2008],



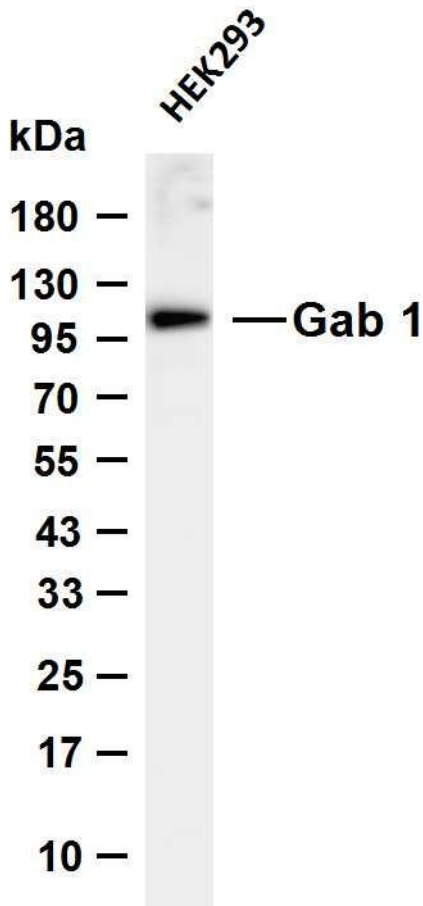


matters needing attention

Avoid repeated freezing and thawing!

Usage suggestions

This product can be used in immunological reaction related experiments. For more information, please consult technical personnel.



Various whole cell lysates were separated by 4-20% SDS-PAGE, and the membrane was blotted with anti-Gab 1 antibody. The HRP-conjugated Goat anti-Rabbit IgG (H + L) antibody was used to detect the antibody. Lane 1: HEK293 Predicted band size: 77kDa Observed band size: 110kDa

杭州臻优品生物科技有限公司

热销产品:

蛋白、一抗、抗体对、ELISA试剂盒、生化试剂盒  
CCK8试剂盒、QPCR检测试剂盒

检测服务:

ELISA检测及定制服务 | 生化检测 | PCR、QPCR检测 | WB检测  
ICO-IP检测 | 切片 | 染色 | 免疫组化 | 免疫荧光 | 透射电镜全套  
| 宏基因组、转录组、基因组、蛋白组、代谢组测序



关注官网



关注客服