



TRAF3 Rabbit mAb

Catalog No	YP-rAb-17221
Isotype	IgG
Reactivity	Human,Mouse,Rat
Applications	WB,IF,ELISA
Gene Name	TRAF3
Protein Name	TNF receptor-associated factor 3
Purification Process	Protein A
Specificity	Endogenous
Formulation	PBS, 50% glycerol, 0.05% Proclin 300, 0.05%BSA
Source	Monoclonal, Rabbit,IgG
Dilution	WB 1:2000-1:10000; IF 1:200-1:1000; ELISA 1:5000-1:20000;
Concentration	0.5 mg/ml
Purity	≥90%
Storage Stability	-15° C to -25° C/1 year(Do not lower than -25° C)
Synonyms	TRAF3 ; CAP1 ; CRAF1 ; TNF receptor-associated factor 3 ; CAP-1 ; CD40 receptor-associated factor 1 ; CRAF1 ; CD40-binding protein ; CD40BP ; LMP1-associated protein 1 ; LAP1
Observed Band	64kD
Calculated Molecular Weight	64kD
Cell Pathway	Cytoplasm . Endosome . Mitochondrion . Undergoes endocytosis together with TLR4 upon LPS signaling (By similarity). Co-localized to mitochondria with TRIM35 (PubMed:32562145). .
Tissue Specificity	Brain,Fetal brain,Lymphoma,T-cell,
Function	Caution:The sequence shown here is derived from an Ensembl automatic analysis pipeline and should be considered as preliminary data.,Domain:The MATH/TRAF domain binds to receptor cytoplasmic domains.,Function:Adapter protein and signal transducer that links members of the tumor necrosis factor receptor family to different signaling pathways by association with the receptor cytoplasmic domain and kinases. Seems to be involved in activation of NF-kappa-B and JNK and in apoptosis. Is regulated by TANK/ITRAF which competes with TNFRSF5/CD40 for binding. Seems to play a role T-cell dependent immune responses.,similarity:Contains 1 MATH domain.,similarity:Contains 1 RING-type zinc finger.,similarity:Contains 2





TRAF-type zinc fingers.,subunit:Homotrimer (Probable). Heteromer with TRAF5 (By similarity). Binds to TNFRSF5/CD40. Associates with LTBR/TNFRSF3, TNFRSF4, TNFRSF8/CD30, TNFRSF17/BCMA and EDAR, MAP3K5, MAP3K14, and TRAF-interacting protein TRIP and TRAF and TNF receptor associated protein TTRAP. Binds to TANK/ITRAF and TRAF3IP1. Interacts with TICAM1 (By similarity). Interacts with OTUD5.,

Background

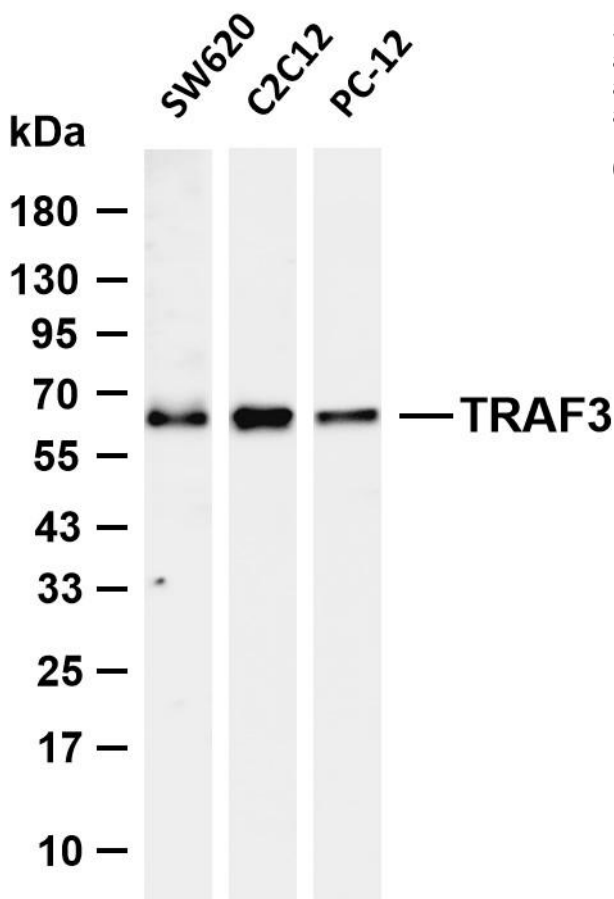
TNF receptor associated factor 3(TRAF3) Homo sapiens The protein encoded by this gene is a member of the TNF receptor associated factor (TRAF) protein family. TRAF proteins associate with, and mediate the signal transduction from, members of the TNF receptor (TNFR) superfamily. This protein participates in the signal transduction of CD40, a TNFR family member important for the activation of the immune response. This protein is found to be a critical component of the lymphotoxin-beta receptor (LTbetaR) signaling complex, which induces NF-kappaB activation and cell death initiated by LTbeta ligation. Epstein-Barr virus encoded latent infection membrane protein-1 (LMP1) can interact with this and several other members of the TRAF family, which may be essential for the oncogenic effects of LMP1. Several alternatively spliced transcript variants encoding three distinct isoforms have been reported. [provided by RefSeq, Dec 2010],

matters needing attention

Avoid repeated freezing and thawing!

Usage suggestions

This product can be used in immunological reaction related experiments. For more information, please consult technical personnel.



Various whole cell lysates were separated by 4-20% SDS-PAGE, and the membrane was blotted with anti-TRAF3 antibody. The HRP-conjugated Goat anti-Rabbit IgG (H + L) antibody was used to detect the antibody. Lane 1: SW620 Lane 2: C2C12 Lane 3: PC-12 Predicted band size: 64kDa Observed band size: 64kDa

