



ROCK2 Rabbit mAb

Catalog No	YP-rAb-17213
Isotype	IgG
Reactivity	Human,Mouse,Rat
Applications	WB,IF,ELISA
Gene Name	ROCK2 KIAA0619
Protein Name	Rho-associated protein kinase 2
Purification Process	Protein A
Specificity	Endogenous
Formulation	PBS, 50% glycerol, 0.05% Proclin 300, 0.05%BSA
Source	Monoclonal, Rabbit,IgG
Dilution	WB 1:2000-1:10000; IF 1:200-1:1000; ELISA 1:5000-1:20000;
Concentration	0.5 mg/ml
Purity	≥90%
Storage Stability	-15° C to -25° C/1 year(Do not lower than -25° C)
Synonyms	ROCK2 ; KIAA0619 ; Rho-associated protein kinase 2 ; Rho kinase 2 ; Rho-associated ; coiled-coil-containing protein kinase 2 ; Rho-associated, coiled-coil-containing protein kinase II ; ROCK-II ; p164 ROCK-2
Observed Band	161kD
Calculated Molecular Weight	161kD
Cell Pathway	Cytoplasm. Cell membrane ; Peripheral membrane protein . Nucleus. Cytoplasm, cytoskeleton, microtubule organizing center, centrosome. Cytoplasmic, and associated with actin microfilaments and the plasma membrane. .
Tissue Specificity	Expressed in the brain (at protein level).
Function	Catalytic activity:ATP + a protein = ADP + a phosphoprotein.,enzyme regulation:Activated by RHOA binding.,Function:Protein kinase that phosphorylates a large number of important signaling proteins, and thereby regulates the assembly of the actin cytoskeleton. Promotes formation of stress fibers and of focal adhesion complexes. Plays a role in smooth muscle contraction.,miscellaneous:Inhibited by Y-27632.,PTM:Phosphorylated upon DNA damage, probably by ATM or ATR.,similarity:Belongs to the protein kinase superfamily. AGC Ser/Thr protein kinase family.,similarity:Contains 1 AGC-kinase C-terminal domain.,similarity:Contains 1 PH domain.,similarity:Contains 1 phorbol-ester/DAG-type zinc finger.,similarity:Contains 1 protein kinase

杭州臻优品生物科技有限公司

热销产品:

蛋白、一抗、抗体对、ELISA试剂盒、生化试剂盒
CCK8试剂盒、QPCR检测试剂盒

检测服务:

ELISA检测及定制服务 | 生化检测 | PCR、QPCR检测 | WB检测
ICO-IP检测 | 切片 | 染色 | 免疫组化 | 免疫荧光 | 透射电镜全套
| 宏基因组、转录组、基因组、蛋白组、代谢组测序



关注官网



关注客服



domain.,similarity:Contains 1 REM (Hr1) repeat.,subcellular location:Cytoplasmic, and associated with actin microfilaments and the plasma membrane.,subunit:Homodimer. Binds RHOA that has been activated by GTP binding. Binds IRS1, RHOB and RHOC.,

Background

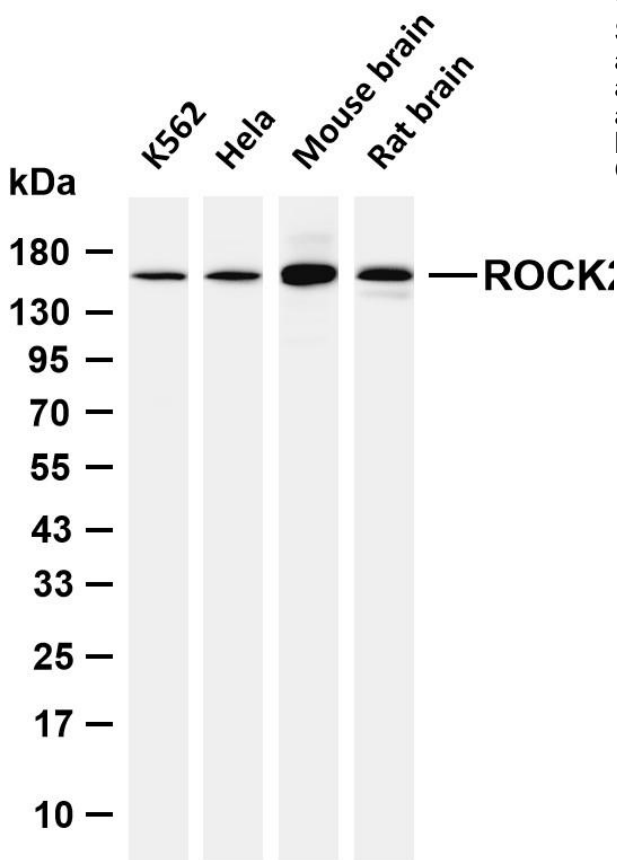
The protein encoded by this gene is a serine/threonine kinase that regulates cytokinesis, smooth muscle contraction, the formation of actin stress fibers and focal adhesions, and the activation of the c-fos serum response element. This protein, which is an isozyme of ROCK1 is a target for the small GTPase Rho. [provided by RefSeq, Jul 2008],

matters needing attention

Avoid repeated freezing and thawing!

Usage suggestions

This product can be used in immunological reaction related experiments. For more information, please consult technical personnel.



Various whole cell lysates were separated by 4-20% SDS-PAGE, and the membrane was blotted with anti-ROCK2 antibody. The HRP-conjugated Goat anti-Rabbit IgG (H + L) antibody was used to detect the antibody. Lane 1: K562 Lane 2: HeLa Lane 3: Mouse brain Lane 4: Rat brain Predicted band size: 161kDa Observed band size: 161kDa

