



# MOES Rabbit mAb

<b>Catalog No</b>	YP-rAb-17208
<b>Isotype</b>	IgG
<b>Reactivity</b>	Human,Mouse,Rat
<b>Applications</b>	WB,IHC,IF,IP,ELISA
<b>Gene Name</b>	MSN
<b>Protein Name</b>	MOES
<b>Purification Process</b>	Protein A
<b>Specificity</b>	Endogenous
<b>Formulation</b>	PBS, 50% glycerol, 0.05% Proclin 300, 0.05%BSA
<b>Source</b>	Monoclonal, Rabbit,IgG
<b>Dilution</b>	IHC 1:1000-1:4000; WB 1:2000-1:10000; IF 1:200-1:1000; ELISA 1:5000-1:20000; IP 1:50-1:200; Note: For IHC, we suggest antigen retrieval with TE buffer pH 9.0
<b>Concentration</b>	0.5 mg/ml
<b>Purity</b>	≥90%
<b>Storage Stability</b>	-15° C to -25° C/1 year(Do not lower than -25° C)
<b>Synonyms</b>	
<b>Observed Band</b>	78kD
<b>Calculated Molecular Weight</b>	68kD
<b>Cell Pathway</b>	Cell membrane ; Peripheral membrane protein ; Cytoplasmic side . Cytoplasm, cytoskeleton . Apical cell membrane ; Peripheral membrane protein ; Cytoplasmic side . Cell projection, microvillus membrane ; Peripheral membrane protein ; Cytoplasmic side . Cell projection, microvillus . Phosphorylated form is enriched in microvilli-like structures at apical membrane. Increased cell membrane localization of both phosphorylated and non-phosphorylated forms seen after thrombin treatment (By similarity). Localizes at the uropods of T lymphoblasts. .
<b>Tissue Specificity</b>	In all tissues and cultured cells studied.
<b>Function</b>	Probably involved in connections of major cytoskeletal structures to the plasma membrane.,PTM:Phosphorylation on Thr-558 is crucial for the formation of microvilli-like structures.,similarity:Contains 1 FERM domain.,subcellular location:Phosphorylated form is enriched in microvilli-like structures at apical membrane.,subunit:In resting T-cells, part of a PAG1-SLC9A3R1-MSN complex which is disrupted upon TCR activation (By similarity). Binds SLC9A3R1.,tissue specificity:In all tissues and cultured cells studied.,





### Background

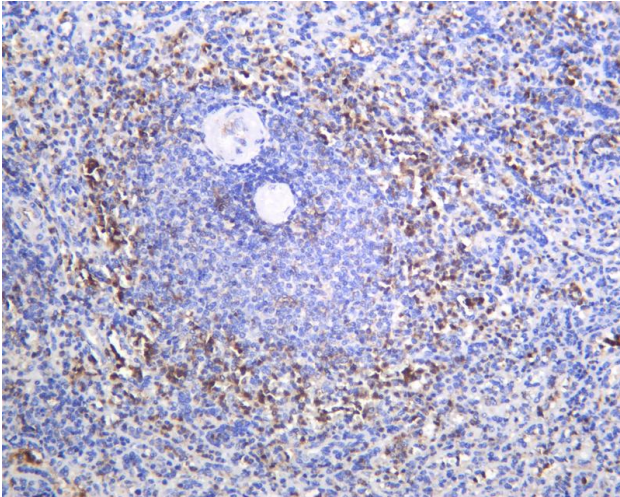
Moesin (for membrane-organizing extension spike protein) is a member of the ERM family which includes ezrin and radixin. ERM proteins appear to function as cross-linkers between plasma membranes and actin-based cytoskeletons. Moesin is localized to filopodia and other membranous protrusions that are important for cell-cell recognition and signaling and for cell movement. [provided by RefSeq, Jul 2008],

### matters needing attention

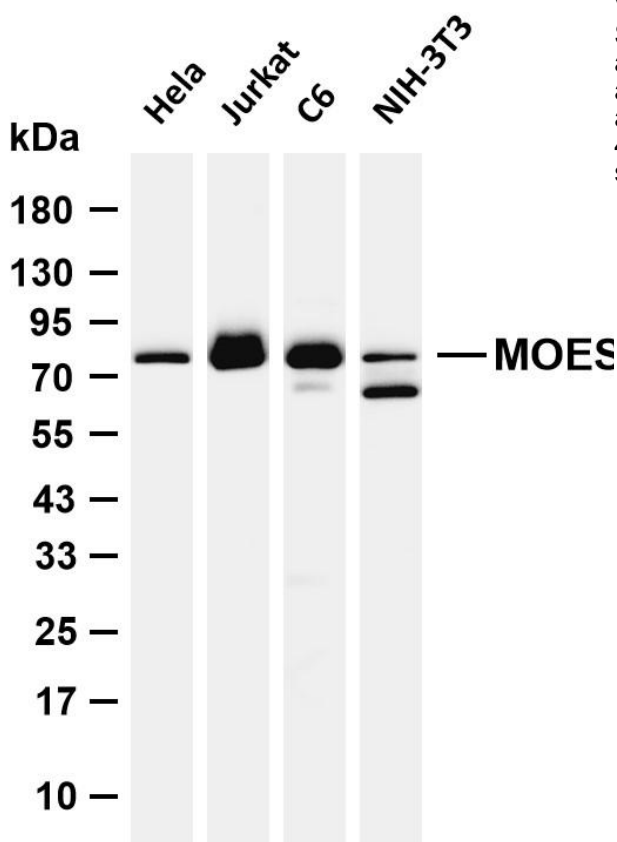
Avoid repeated freezing and thawing!

### Usage suggestions

This product can be used in immunological reaction related experiments. For more information, please consult technical personnel.



Human spleen was stained with anti-MOES Rabbit antibody



Various whole cell lysates were separated by 4-20% SDS-PAGE, and the membrane was blotted with anti-MOES antibody. The HRP-conjugated Goat anti-Rabbit IgG (H + L) antibody was used to detect the antibody. Lane 1: HeLa Lane 2: Jurkat Lane 3: C6 Lane 4: NIH-3T3 Predicted band size: 68kDa Observed band size: 78kDa

