



IL-8 Rabbit mAb

Catalog No	YP-rAb-17207
Isotype	IgG
Reactivity	Human
Applications	WB,IHC,IF,IP,ELISA
Gene Name	IL8 CXCL8
Protein Name	Interleukin-8
Purification Process	Protein A
Specificity	Endogenous
Formulation	PBS, 50% glycerol, 0.05% Proclin 300, 0.05%BSA
Source	Monoclonal, Rabbit,IgG
Dilution	IHC 1:200-1:1000; WB 1:2000-1:10000; IF 1:200-1:1000; ELISA 1:5000-1:20000; IP 1:50-1:200; Note: For IHC, we suggest antigen retrieval with TE buffer pH 9.0
Concentration	0.5 mg/ml
Purity	≥90%
Storage Stability	-15° C to -25° C/1 year(Do not lower than -25° C)
Synonyms	IL8 ; CXCL8 ; Interleukin-8 ; IL-8 ; C-X-C motif chemokine 8 ; Emoctakin ; Granulocyte chemotactic protein 1 ; GCP-1 ; Monocyte-derived neutrophil chemotactic factor ; MDNCF ; Monocyte-derived neutrophil-activating peptide ; MONAP ; Neutrophil-activati
Observed Band	11kD
Calculated Molecular Weight	11kD
Cell Pathway	Secreted.
Tissue Specificity	Chronic myeloid leukemia cell,Kidney,Lung,Lung carcinoma,Neutrophil,Periphe
Function	IL-8 is a chemotactic factor that attracts neutrophils, basophils, and T-cells, but not monocytes. It is also involved in neutrophil activation. It is released from several cell types in response to an inflammatory stimulus. IL-8(6-77) has a 5-10-fold higher activity on neutrophil activation, IL-8(5-77) has increased activity on neutrophil activation and IL-8(7-77) has a higher affinity to receptors CXCR1 and CXCR2 as compared to IL-8(1-77), respectively.,online information:Interleukin-8 entry,PTM:Several N-terminal processed forms are produced by proteolytic cleavage after secretion from at least peripheral blood monocytes, leukocytes and endothelial cells. In general, IL-8(1-77) is referred to





as interleukin-8. IL-8(6-77) is the most prominent form.,similarity:Belongs to the intercrine alpha (chemokine CxC) family.,subunit:Homodimer.,

Background

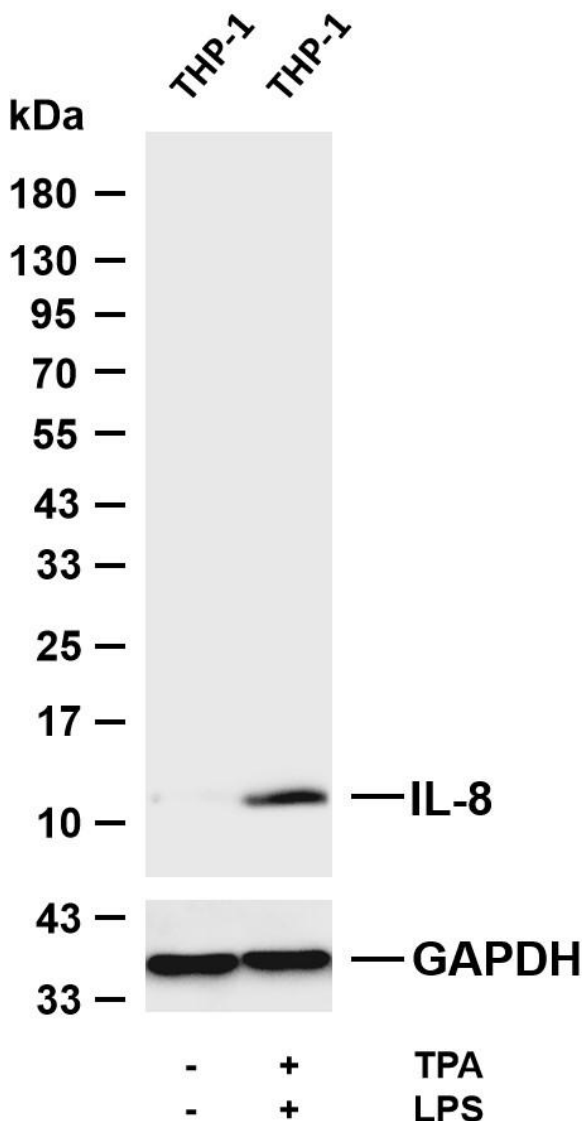
The protein encoded by this gene is a member of the CXC chemokine family. This chemokine is one of the major mediators of the inflammatory response. This chemokine is secreted by several cell types. It functions as a chemoattractant, and is also a potent angiogenic factor. This gene is believed to play a role in the pathogenesis of bronchiolitis, a common respiratory tract disease caused by viral infection. This gene and other ten members of the CXC chemokine gene family form a chemokine gene cluster in a region mapped to chromosome 4q. [provided by RefSeq, Jul 2008],

matters needing attention

Avoid repeated freezing and thawing!

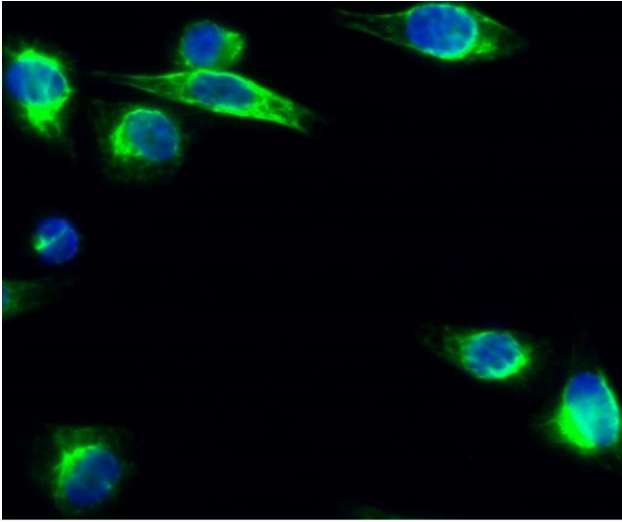
Usage suggestions

This product can be used in immunological reaction related experiments. For more information, please consult technical personnel.

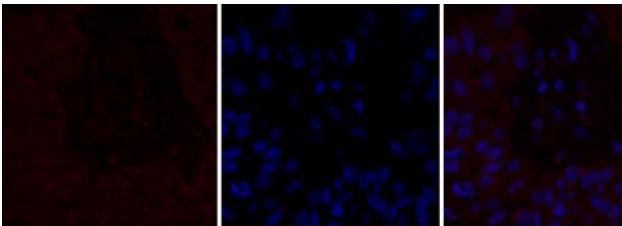


Various whole cell lysates were separated by 4-20% SDS-PAGE, and the membrane was blotted with anti-IL-8 antibody. The HRP-conjugated Goat anti-Rabbit IgG (H + L) antibody was used to detect the antibody. Lane 1: THP-1 Lane 2: THP-1 was treated with TPA(80 nM) for 24 hou





Immunofluorescence analysis of Hela cell. 1,IL-8 Antibody(green) was diluted at 1:200(4° overnight). 2, Goat Anti Rabbit Alexa Fluor 488 Catalog:



Immunofluorescence analysis of human-liver-cancer tissue. 1,IL-8 Antibody(red) was diluted at 1:200(4°C ,overnight). 2, Cy3 labeled Secondary antibody was diluted at 1:300(room temperature, 50min).3, Picture B: DAPI(blue) 10min. Picture A:Target. Picture B: DAPI. Picture C: merge of A+B

A

B

C

