



Rab 10 Rabbit mAb

Catalog No	YP-rAb-17205
Isotype	IgG
Reactivity	Human,Mouse,Rat
Applications	WB,IF,IP,ELISA
Gene Name	RAB10
Protein Name	Ras-related protein Rab-10
Purification Process	Protein A
Specificity	Endogenous
Formulation	PBS, 50% glycerol, 0.05% Proclin 300, 0.05%BSA
Source	Monoclonal, Rabbit,IgG
Dilution	WB 1:2000-1:10000; IF 1:200-1:1000; ELISA 1:5000-1:20000; IP 1:50-1:200;
Concentration	0.5 mg/ml
Purity	≥90%
Storage Stability	-15° C to -25° C/1 year(Do not lower than -25° C)
Synonyms	RAB10 ; Ras-related protein Rab-10
Observed Band	23kD
Calculated Molecular Weight	23kD
Cell Pathway	Cytoplasmic vesicle membrane ; Lipid-anchor ; Cytoplasmic side . Golgi apparatus membrane . Golgi apparatus, trans-Golgi network membrane . Endosome membrane . Recycling endosome membrane . Cytoplasmic vesicle, phagosome membrane . Cytoplasm, cytoskeleton, cilium basal body . Endoplasmic reticulum membrane . Cytoplasm, perinuclear region . Associates with SLC2A4/GLUT4 storage vesicles (PubMed:22908308). Localizes to the base of the cilium when phosphorylated by LRRK2 on Thr-73 (PubMed:20576682, PubMed:30398148). Transiently associates with phagosomes (By similarity). Localizes to the endoplasmic reticulum at domains of new tubule growth (PubMed:23263280). .
Tissue Specificity	Expressed in the hippocampus (PubMed:29562525). Expressed in neutrophils (at protein level) (PubMed:29127255). Expressed in the testis (at protein level) (PubMed:28067790).
Function	May be involved in vesicular trafficking and neurotransmitter release.,similarity:Belongs to the small GTPase superfamily. Rab family.,





Background

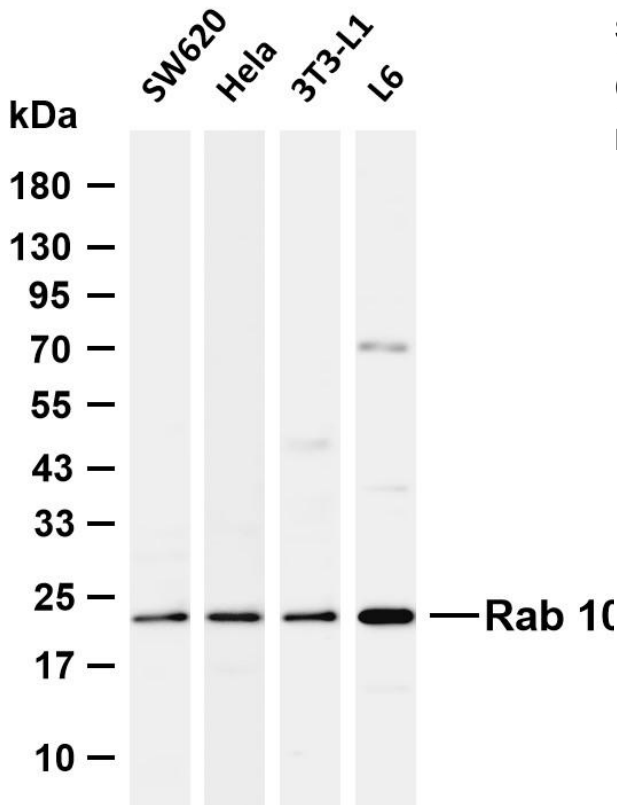
RAB10 belongs to the RAS (see HRAS; MIM 190020) superfamily of small GTPases. RAB proteins localize to exocytic and endocytic compartments and regulate intracellular vesicle trafficking (Bao et al., 1998 [PubMed 9918381]).[supplied by OMIM, Mar 2009],

matters needing attention

Avoid repeated freezing and thawing!

Usage suggestions

This product can be used in immunological reaction related experiments. For more information, please consult technical personnel.



Various whole cell lysates were separated by 4-20% SDS-PAGE, and the membrane was blotted with anti-Rab 10 antibody. The HRP-conjugated Goat anti-Rabbit IgG (H + L) antibody was used to detect the antibody. Lane 1: SW620 Lane 2: HeLa Lane 3: 3T3-L1 Lane 4: L6
Predicted band size: 23kDa Observed band size: 23kDa

