



SCARB1 Rabbit mAb

Catalog No	YP-rAb-17203
Isotype	IgG
Reactivity	Human,Mouse,Rat
Applications	WB,IHC,IF,IP,ELISA
Gene Name	SCARB1 CD36L1 CLA1
Protein Name	Scavenger receptor class B member 1 (SRB1) (CD36 and LIMPII analogous 1) (CLA-1) (CD36 antigen-like 1) (Collagen type I receptor, thrombospondin receptor-like 1) (SR-BI) (CD antigen CD36)
Purification Process	Protein A
Specificity	Endogenous
Formulation	PBS, 50% glycerol, 0.05% Proclin 300, 0.05%BSA
Source	Monoclonal, Rabbit,IgG
Dilution	IHC 1:200-1:1000; WB 1:2000-1:10000; IF 1:200-1:1000; ELISA 1:5000-1:20000; IP 1:50-1:200; Note: For IHC, we suggest antigen retrieval with TE buffer pH 9.0
Concentration	0.5 mg/ml
Purity	≥90%
Storage Stability	-15° C to -25° C/1 year(Do not lower than -25° C)
Synonyms	
Observed Band	80kD
Calculated Molecular Weight	61kD
Cell Pathway	Cell membrane ; Multi-pass membrane protein. Membrane, caveola ; Multi-pass membrane protein. Predominantly localized to cholesterol and sphingomyelin-enriched domains within the plasma membrane, called caveolae.
Tissue Specificity	Widely expressed.
Function	Receptor for different ligands such as phospholipids, cholesterol ester, lipoproteins, phosphatidylserine and apoptotic cells . Receptor for HDL, mediating selective uptake of cholesteryl ether and HDL-dependent cholesterol efflux . Also facilitates the flux of free and esterified cholesterol between the cell surface and apoB-containing lipoproteins and modified lipoproteins, although less efficiently than HDL. May be involved in the phagocytosis of apoptotic cells, via its phosphatidylserine binding activity . ; (Microbial infection) Acts as a receptor for hepatitis C virus in hepatocytes and appears to facilitate its cell entry . Binding between SCARB1 and the hepatitis C virus glycoprotein E2 is independent of the genotype of the viral isolate . ; (Microbial infection) Mediates uptake of M.fortuitum, E.coli and S.aureus. ; (Microbial infection) Facilitates the entry of

杭州臻优品生物科技有限公司

热销产品:

蛋白、一抗、抗体对、ELISA试剂盒、生化试剂盒
CCK8试剂盒、QPCR检测试剂盒

检测服务:

ELISA检测及定制服务 | 生化检测 | PCR、QPCR检测 | WB检测
ICO-IP检测 | 切片 | 染色 | 免疫组化 | 免疫荧光 | 透射电镜全套
| 宏基因组、转录组、基因组、蛋白组、代谢组测序



关注官网



关注客服



human coronavirus SARS-CoV-2 by acting as an entry cofactor through HDL binding.

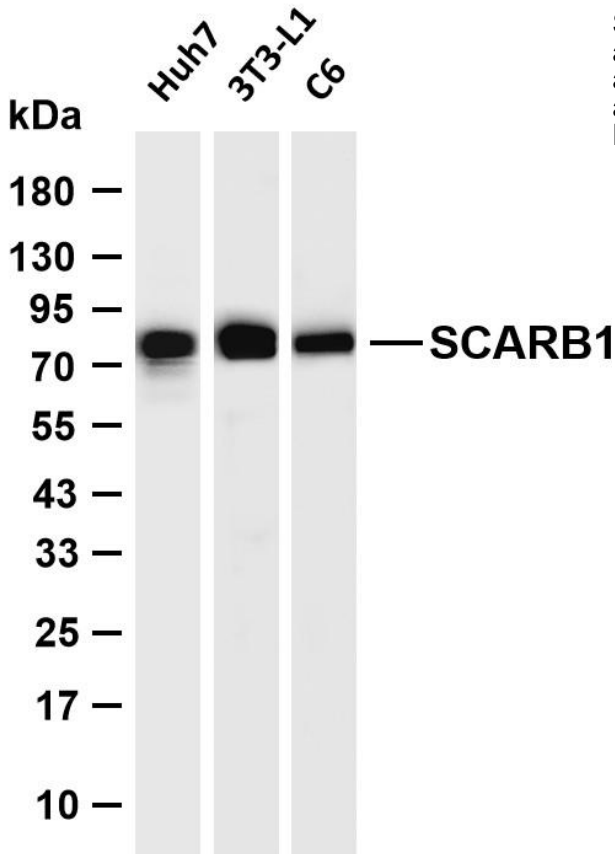
Background

matters needing attention

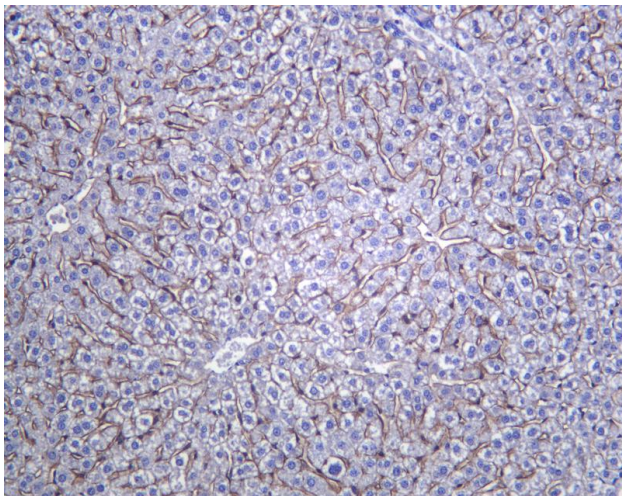
Avoid repeated freezing and thawing!

Usage suggestions

This product can be used in immunological reaction related experiments. For more information, please consult technical personnel.



Various whole cell lysates were separated by 4-20% SDS-PAGE, and the membrane was blotted with anti-SCARB1 antibody. The HRP-conjugated Goat anti-Rabbit IgG (H + L) antibody was used to detect the antibody. Lane 1: Huh7 Lane 2: 3T3-L1 Lane 3: C6 Predicted band size: 61kDa Observed band size: 80kDa



Mouse liver was stained with anti-SCARB1 Rabbit antibody

杭州臻优品生物科技有限公司

热销产品:

蛋白、一抗、抗体对、ELISA试剂盒、生化试剂盒
CCK8试剂盒、QPCR检测试剂盒

检测服务:

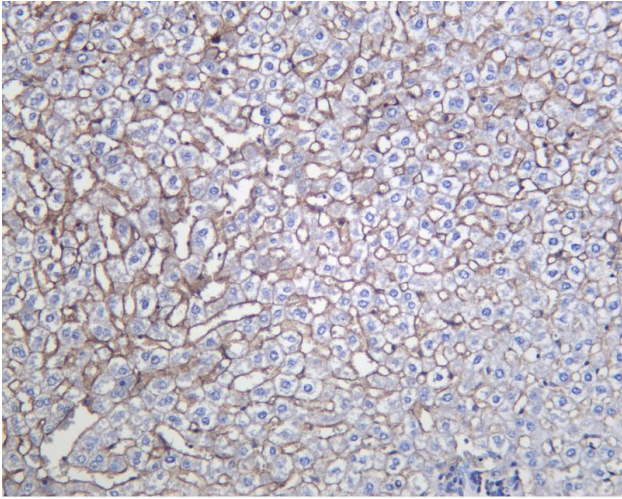
ELISA检测及定制服务 | 生化检测 | PCR、QPCR检测 | WB检测
ICO-IP检测 | 切片 | 染色 | 免疫组化 | 免疫荧光 | 透射电镜全套
| 宏基因组、转录组、基因组、蛋白组、代谢组测序



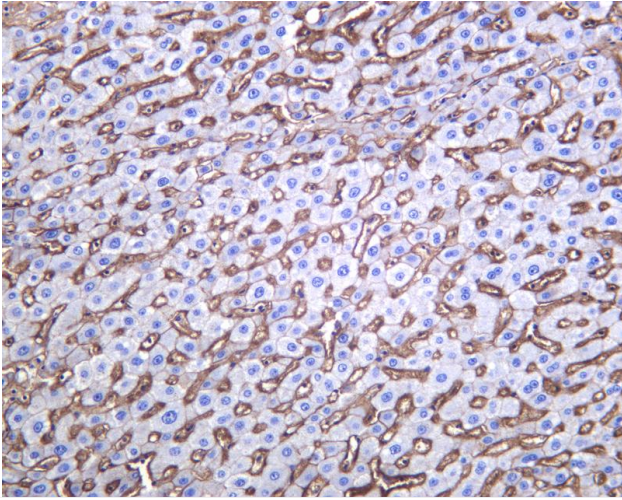
关注官网



关注客服



Rat liver was stained with anti-SCARB1 Rabbit antibody



Human liver was stained with anti-SCARB1 Rabbit antibody

杭州臻优品生物科技有限公司

热销产品:

蛋白、一抗、抗体对、ELISA试剂盒、生化试剂盒
CCK8试剂盒、QPCR检测试剂盒

检测服务:

ELISA检测及定制服务 | 生化检测 | PCR、QPCR检测 | WB检测
ICO-IP检测 | 切片 | 染色 | 免疫组化 | 免疫荧光 | 透射电镜全套
| 宏基因组、转录组、基因组、蛋白组、代谢组测序



关注官网



关注客服