



# NUMB Rabbit mAb

<b>Catalog No</b>	YP-rAb-17200
<b>Isotype</b>	IgG
<b>Reactivity</b>	Human,Mouse,Rat
<b>Applications</b>	WB,IHC,IF,IP,ELISA
<b>Gene Name</b>	NUMB
<b>Protein Name</b>	Protein numb homolog
<b>Purification Process</b>	Protein A
<b>Specificity</b>	Endogenous
<b>Formulation</b>	PBS, 50% glycerol, 0.05% Proclin 300, 0.05%BSA
<b>Source</b>	Monoclonal, Rabbit,IgG
<b>Dilution</b>	IHC 1:200-1:1000; WB 1:500-1:2000; IF 1:200-1:1000; ELISA 1:5000-1:20000; IP 1:50-1:200; Note: For IHC, we suggest antigen retrieval with TE buffer pH 9.0
<b>Concentration</b>	0.5 mg/ml
<b>Purity</b>	≥90%
<b>Storage Stability</b>	-15° C to -25° C/1 year(Do not lower than -25° C)
<b>Synonyms</b>	NUMB ; Protein numb homolog ; h-Numb ; Protein S171
<b>Observed Band</b>	71kD
<b>Calculated Molecular Weight</b>	71kD
<b>Cell Pathway</b>	Cell membrane ; Peripheral membrane protein ; Cytoplasmic side . Endosome membrane ; Peripheral membrane protein ; Cytoplasmic side . Localizes to perinuclear endosomes in an AAK1-dependent manner. .
<b>Tissue Specificity</b>	B cells,Blood,Brain,Cervix carcinoma,Epithelium,Fetal brain,HeLa cells,Live
<b>Function</b>	Implicated in the control of cell fate decisions during development.,PTM:Isoform 1 and isoform 2 are ubiquitinated by LNX leading to their subsequent proteasomal degradation (By similarity). Ubiquitinated; mediated by SIAH1 and leading to its subsequent proteasomal degradation.,sequence Caution:Intron retention.,similarity:Contains 1 PID domain.,subunit:Interacts with EPS15, LNX and NOTCH1. May interact with DUOXA1. Interacts with RALBP1 in a complex also containing EPN1 and TFAP2A during interphase and mitosis.,
<b>Background</b>	The protein encoded by this gene plays a role in the determination of cell fates during development. The encoded protein, whose degradation is induced in a proteasome-dependent manner by MDM2, is a membrane-bound protein that has been shown to associate with EPS15, LNX1, and NOTCH1. Alternative splicing

## 杭州臻优品生物科技有限公司

### 热销产品:

蛋白、一抗、抗体对、ELISA试剂盒、生化试剂盒  
CCK8试剂盒、QPCR检测试剂盒

### 检测服务:

ELISA检测及定制服务 | 生化检测 | PCR、QPCR检测 | WB检测  
ICO-IP检测 | 切片 | 染色 | 免疫组化 | 免疫荧光 | 透射电镜全套  
| 宏基因组、转录组、基因组、蛋白组、代谢组测序



关注官网



关注客服



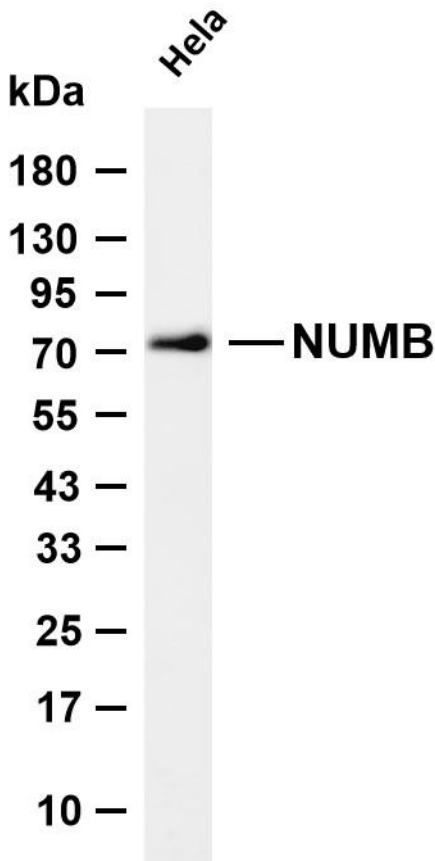
results in multiple transcript variants. [provided by RefSeq, Feb 2016],

**matters needing attention**

Avoid repeated freezing and thawing!

**Usage suggestions**

This product can be used in immunological reaction related experiments. For more information, please consult technical personnel.



Various whole cell lysates were separated by 4-20% SDS-PAGE, and the membrane was blotted with anti-NUMB antibody. The HRP-conjugated Goat anti-Rabbit IgG (H + L) antibody was used to detect the antibody. Lane 1: HeLa Predicted band size: 71kDa Observed band size: 71kDa

