



# Catenin- $\gamma$ Rabbit mAb

<b>Catalog No</b>	YP-rAb-17193
<b>Isotype</b>	IgG
<b>Reactivity</b>	Human,Mouse,Rat
<b>Applications</b>	WB,IHC,IF,ELISA
<b>Gene Name</b>	JUP
<b>Protein Name</b>	Junction plakoglobin
<b>Purification Process</b>	Protein A
<b>Specificity</b>	Endogenous
<b>Formulation</b>	PBS, 50% glycerol, 0.05% Proclin 300, 0.05%BSA
<b>Source</b>	Monoclonal, Rabbit,IgG
<b>Dilution</b>	IHC 1:200-1:1000; WB 1:2000-1:10000; IF 1:200-1:1000; ELISA 1:5000-1:20000; Note: For IHC, we suggest antigen retrieval with TE buffer pH 9.0
<b>Concentration</b>	0.5 mg/ml
<b>Purity</b>	$\geq 90\%$
<b>Storage Stability</b>	-15° C to -25° C/1 year(Do not lower than -25° C)
<b>Synonyms</b>	JUP ; CTNNG ; DP3 ; Junction plakoglobin ; Catenin gamma ; Desmoplakin III ; Desmoplakin-3
<b>Observed Band</b>	82kD
<b>Calculated Molecular Weight</b>	82kD
<b>Cell Pathway</b>	Cell junction, adherens junction . Cell junction, desmosome . Cytoplasm, cytoskeleton . Membrane ; Peripheral membrane protein . Cytoplasmic in a soluble and membrane-associated form.
<b>Tissue Specificity</b>	Cervix carcinoma,Epidermal carcinoma,Epithelium,Leukocyte,Lung,Lung carcinoma,Place
<b>Function</b>	Disease:Defects in JUP are the cause of familial arrhythmogenic right ventricular dysplasia type 12 (ARVD12) [MIM:611528]; also called arrhythmogenic right ventricular cardiomyopathy type 12 (ARVC12). ARVD is an autosomal dominant disease characterized by partial degeneration of the myocardium of the right ventricle, electrical instability, and sudden death. It is clinically defined by electrocardiographic and angiographic criteria; pathologic findings, replacement of ventricular myocardium with fatty and fibrous elements, preferentially involve the right ventricular free wall.,Disease:Defects in JUP are the cause of Naxos disease (NXD) [MIM:601214]. NXD is an autosomal recessive disorder combining diffuse non-epidermolytic palmoplantar keratoderma with arrhythmogenic right ventricular dysplasia/cardiomyopathy and woolly hair.,Function:Common

杭州臻优品生物科技有限公司

热销产品:

蛋白、一抗、抗体对、ELISA试剂盒、生化试剂盒  
CCK8试剂盒、QPCR检测试剂盒

检测服务:

ELISA检测及定制服务 | 生化检测 | PCR、QPCR检测 | WB检测  
ICO-IP检测 | 切片 | 染色 | 免疫组化 | 免疫荧光 | 透射电镜全套  
| 宏基因组、转录组、基因组、蛋白组、代谢组测序



关注官网



关注客服



junctional plaque protein. The membrane-associated plaques are architectural elements in an important strategic position to influence the arrangement and function of both the cytoskeleton and the cells within the tissue. The presence of plakoglobin in both the desmosomes and in the intermediate junctions suggests that it plays a central role in the structure and function of submembranous plaques. **Caution:** Translation N-terminally shortened. **similarity:** Belongs to the beta-catenin family. **similarity:** Contains 9 ARM repeats. **subcellular location:** Cytoplasmic in a soluble and membrane-associated form. **subunit:** Homodimer. Interacts with MUC1.

### Background

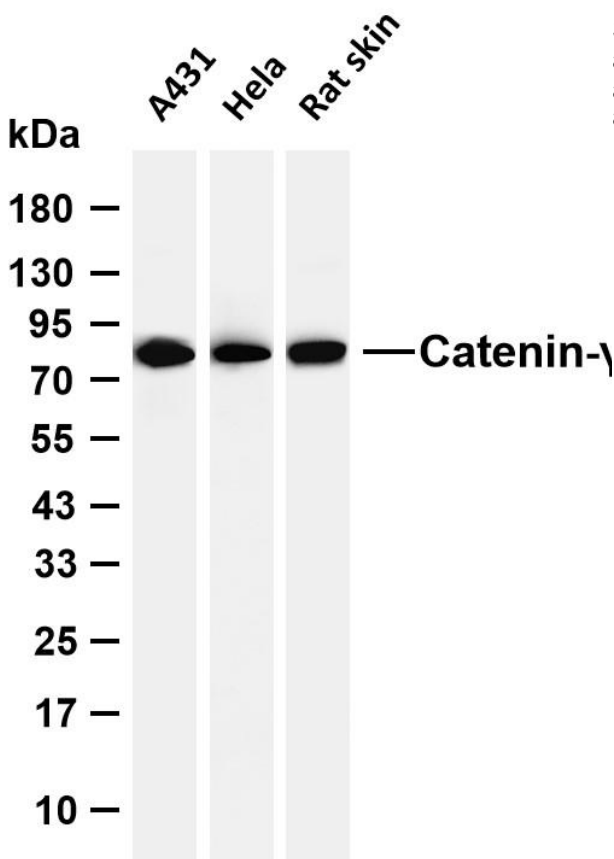
This gene encodes a major cytoplasmic protein which is the only known constituent common to submembranous plaques of both desmosomes and intermediate junctions. This protein forms distinct complexes with cadherins and desmosomal cadherins and is a member of the catenin family since it contains a distinct repeating amino acid motif called the armadillo repeat. Mutation in this gene has been associated with Naxos disease. Alternative splicing occurs in this gene; however, not all transcripts have been fully described. [provided by RefSeq, Jul 2008],

### matters needing attention

Avoid repeated freezing and thawing!

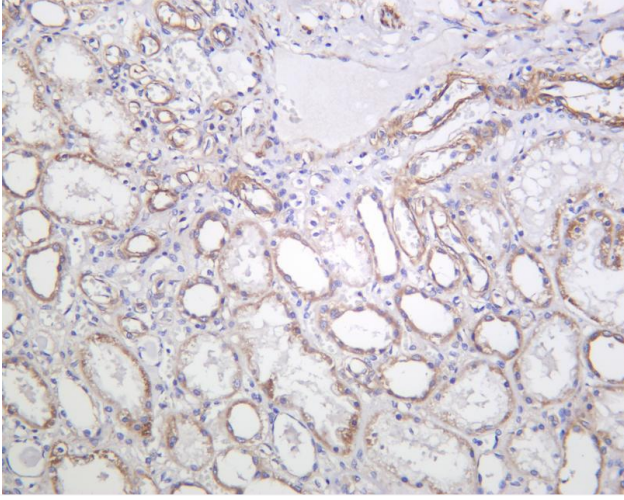
### Usage suggestions

This product can be used in immunological reaction related experiments. For more information, please consult technical personnel.



Various whole cell lysates were separated by 4-20% SDS-PAGE, and the membrane was blotted with anti-Catenin- $\gamma$  antibody. The HRP-conjugated Goat anti-Rabbit IgG (H + L) antibody was used to detect the antibody. Lane 1: A431 Lane 2: HeLa Lane 3: Rat skin  
Predicted band size: 82kDa Observed band size: 82kDa





Human kidney was stained with anti-Catenin- $\gamma$  Rabbit antibody

## 杭州臻优品生物科技有限公司

### 热销产品:

蛋白、一抗、抗体对、ELISA试剂盒、生化试剂盒  
CCK8试剂盒、QPCR检测试剂盒

### 检测服务:

ELISA检测及定制服务 | 生化检测 | PCR、QPCR检测 | WB检测  
ICO-IP检测 | 切片 | 染色 | 免疫组化 | 免疫荧光 | 透射电镜全套  
| 宏基因组、转录组、基因组、蛋白组、代谢组测序



关注官网



关注客服