



RHEB Rabbit mAb

Catalog No	YP-rAb-17186
Isotype	IgG
Reactivity	Human,Mouse,Rat
Applications	WB,IHC,IF,ELISA
Gene Name	RHEB RHEB2
Protein Name	RHEB
Purification Process	Protein A
Specificity	Endogenous
Formulation	PBS, 50% glycerol, 0.05% Proclin 300, 0.05%BSA
Source	Monoclonal, Rabbit,IgG
Dilution	IHC 1:200-1:1000; WB 1:2000-1:10000; IF 1:200-1:1000; ELISA 1:5000-1:20000; Note: For IHC, we suggest antigen retrieval with TE buffer pH 9.0
Concentration	0.5 mg/ml
Purity	≥90%
Storage Stability	-15° C to -25° C/1 year(Do not lower than -25° C)
Synonyms	Ras homolog enriched in brain
Observed Band	21kD
Calculated Molecular Weight	21kD
Cell Pathway	Endomembrane system ; Lipid-anchor ; Cytoplasmic side . Golgi apparatus membrane ; Lipid-anchor ; Cytoplasmic side . Cytoplasm, cytosol . Endoplasmic reticulum membrane ; Lipid-anchor ; Cytoplasmic side .
Tissue Specificity	Ubiquitous. Highest levels observed in skeletal and cardiac muscle.
Function	Not known; binds GTP and exhibits intrinsic GTPase activity.,similarity:Belongs to the small GTPase superfamily. Rheb family.,tissue specificity:Ubiquitous. Highest levels observed in skeletal and cardiac muscle.,
Background	This gene is a member of the small GTPase superfamily and encodes a lipid-anchored, cell membrane protein with five repeats of the RAS-related GTP-binding region. This protein is vital in regulation of growth and cell cycle progression due to its role in the insulin/TOR/S6K signaling pathway. The protein has GTPase activity and shuttles between a GDP-bound form and a GTP-bound form, and farnesylation of the protein is required for this activity. Three pseudogenes have been mapped, two on chromosome 10 and one on chromosome 22. [provided by RefSeq, Jul 2008],



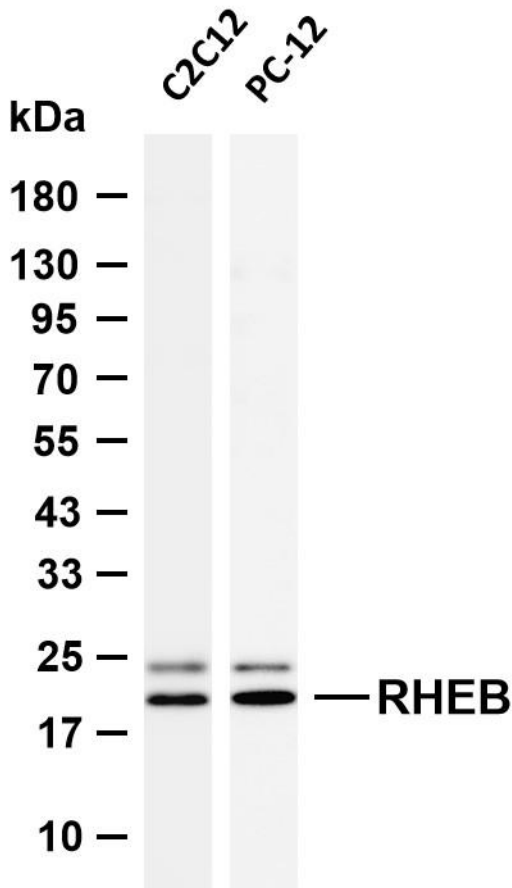


matters needing attention

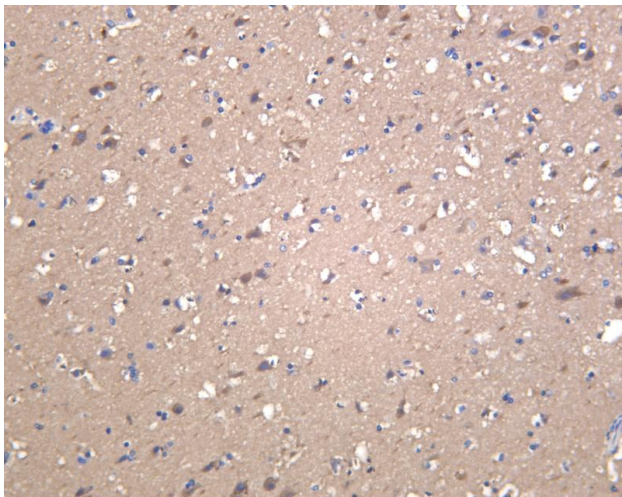
Avoid repeated freezing and thawing!

Usage suggestions

This product can be used in immunological reaction related experiments. For more information, please consult technical personnel.



Various whole cell lysates were separated by 4-20% SDS-PAGE, and the membrane was blotted with anti-RHEB antibody. The HRP-conjugated Goat anti-Rabbit IgG (H + L) antibody was used to detect the antibody. Lane 1: C2C12 Lane 2: PC-12 Predicted band size: 20kDa Observed band size: 21kDa



Human brain was stained with anti-RHEB Rabbit antibody

杭州臻优品生物科技有限公司

热销产品:

蛋白、一抗、抗体对、ELISA试剂盒、生化试剂盒
CCK8试剂盒、QPCR检测试剂盒

检测服务:

ELISA检测及定制服务 | 生化检测 | PCR、QPCR检测 | WB检测
ICO-IP检测 | 切片 | 染色 | 免疫组化 | 免疫荧光 | 透射电镜全套
| 宏基因组、转录组、基因组、蛋白组、代谢组测序



关注官网



关注客服