



Flotillin-2 Rabbit mAb

Catalog No	YP-rAb-17182
Isotype	IgG
Reactivity	Human,Mouse,Rat
Applications	WB,IF,IP,ELISA
Gene Name	FLOT2 ESA1 M17S1
Protein Name	Flotillin-2
Purification Process	Protein A
Specificity	Endogenous
Formulation	PBS, 50% glycerol, 0.05% Proclin 300, 0.05%BSA
Source	Monoclonal, Rabbit,IgG
Dilution	WB 1:2000-1:10000; IF 1:200-1:1000; ELISA 1:5000-1:20000; IP 1:50-1:200;
Concentration	0.5 mg/ml
Purity	≥90%
Storage Stability	-15° C to -25° C/1 year(Do not lower than -25° C)
Synonyms	FLOT2 ; ESA1 ; M17S1 ; Flotillin-2 ; Epidermal surface antigen ; ESA ; Membrane component chromosome 17 surface marker 1
Observed Band	47kD
Calculated Molecular Weight	47kD
Cell Pathway	Cell membrane ; Peripheral membrane protein . Membrane, caveola ; Peripheral membrane protein . Endosome . Membrane ; Lipid-anchor . Membrane-associated protein of caveolae.
Tissue Specificity	In skin, expressed in epidermis and epidermal appendages but not in dermis. Expressed in all layers of the epidermis except the basal layer. In hair follicles, expressed in the suprabasal layer but not the basal layer. Also expressed in melanoma and carcinoma cell lines, fibroblasts and foreskin melanocytes.
Function	May act as a scaffolding protein within caveolar membranes, functionally participating in formation of caveolae or caveolae-like vesicles. May be involved in epidermal cell adhesion and epidermal structure and function.,similarity:Belongs to the band 7/mec-2 family. Flotillin subfamily.,subcellular location:Membrane-associated protein of caveolae.,subunit:Heterooligomeric complex of flotillin-1 and flotillin-2 and caveolin-1 and caveolin-2.,tissue specificity:In skin, expressed in epidermis and epidermal appendages but not in dermis. Expressed in all layers of the epidermis except the basal layer. In hair follicles, expressed in the suprabasal layer but not the basal layer. Also expressed





in melanoma and carcinoma cell lines, fibroblasts and foreskin melanocytes.,

Background

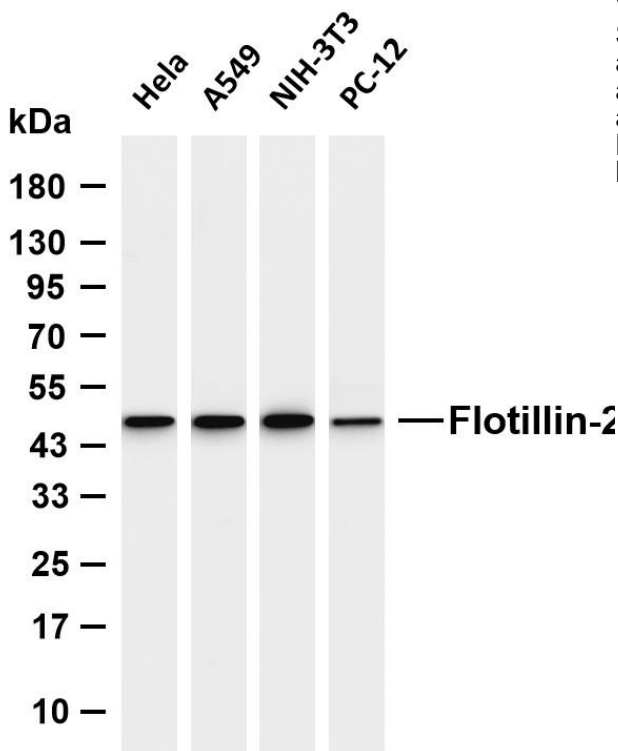
Caveolae are small domains on the inner cell membrane involved in vesicular trafficking and signal transduction. This gene encodes a caveolae-associated, integral membrane protein, which is thought to function in neuronal signaling. [provided by RefSeq, Jul 2008],

matters needing attention

Avoid repeated freezing and thawing!

Usage suggestions

This product can be used in immunological reaction related experiments. For more information, please consult technical personnel.



Various whole cell lysates were separated by 4-20% SDS-PAGE, and the membrane was blotted with anti-Flotillin-2 antibody. The HRP-conjugated Goat anti-Rabbit IgG (H + L) antibody was used to detect the antibody. Lane 1: HeLa Lane 2: A549 Lane 3: NIH-3T3 Lane 4: PC-12 Predicted band size: 47kDa Observed band size: 47kDa

