



GRB2 Rabbit mAb

Catalog No	YP-rAb-17180
Isotype	IgG
Reactivity	Human,Mouse,Rat
Applications	WB,IHC,IF,IP,ELISA
Gene Name	GRB2
Protein Name	Growth factor receptor-bound protein 2
Purification Process	Protein A
Specificity	Endogenous
Formulation	PBS, 50% glycerol, 0.05% Proclin 300, 0.05%BSA
Source	Monoclonal, Rabbit,IgG
Dilution	IHC 1:200-1:1000; WB 1:2000-1:10000; IF 1:200-1:1000; ELISA 1:5000-1:20000; IP 1:50-1:200; Note: For IHC, we suggest antigen retrieval with TE buffer pH 9.0
Concentration	0.5 mg/ml
Purity	≥90%
Storage Stability	-15° C to -25° C/1 year(Do not lower than -25° C)
Synonyms	GRB2 ; ASH ; Growth factor receptor-bound protein 2 ; Adapter protein GRB2 ; Protein Ash ; SH2/SH3 adapter GRB2
Observed Band	25kD
Calculated Molecular Weight	25kD
Cell Pathway	Nucleus . Cytoplasm . Endosome . Golgi apparatus .
Tissue Specificity	Brain,Cajal-Retzius cell,Epidermis,Epithelium,Fetal brain cortex,Fe
Function	Alternative products:Additional isoforms seem to exist,Domain:The SH3 domains mediate interaction with RALGPS1 and SHB.,Function:Adapter protein that provides a critical link between cell surface growth factor receptors and the Ras signaling pathway.,Function:Isoform GRB3-3 does not bind to phosphorylated epidermal growth factor receptor (EGFR) but inhibits EGF-induced transactivation of a RAS-responsive element. Isoform GRB3-3 acts as a dominant negative protein over GRB2 and by suppressing proliferative signals, may trigger active programmed cell death.,similarity:Belongs to the GRB2/sem-5/DRK family.,similarity:Contains 1 SH2 domain.,similarity:Contains 2 SH3 domains.,subunit:Associates with activated Tyr-phosphorylated EGF receptors and PDGF receptors via its SH2 domain. Also associates to other cellular Tyr-phosphorylated proteins such as SIT1, IRS1, IRS4, SHC and LNK; probably

杭州臻优品生物科技有限公司

热销产品:

蛋白、一抗、抗体对、ELISA试剂盒、生化试剂盒
CCK8试剂盒、QPCR检测试剂盒

检测服务:

ELISA检测及定制服务 | 生化检测 | PCR、QPCR检测 | WB检测
ICO-IP检测 | 切片 | 染色 | 免疫组化 | 免疫荧光 | 透射电镜全套
| 宏基因组、转录组、基因组、蛋白组、代谢组测序



关注官网



关注客服



via the concerted action of both its SH2 and SH3 domains. It also seems to interact with RAS in the signaling pathway leading to DNA synthesis. Binds to and translocates the guanine nucleotide exchange factors SOS. Interacts with phosphorylated TOM1L1 and MET. Interacts with the phosphorylated C-terminus of SH2B2. Interacts with phosphorylated SIT1, LAX1, LAT, LAT2 and LIME1 upon TCR and/or BCR activation. Interacts with NISCH, PTPNS1, REPS2 and the syntrophin SNTA1. Interacts with REPS1 and PIK3C2B via its SH3 domains (By similarity). Interacts with HCV NS5A via its SH3 domains. Interacts with CBL and CBLB. Interacts with JUB and CLNK (By similarity). Interacts with SHB, INPP5D/SHIP1, SKAP1 and SKAP2. Forms a complex with MUC1 and SOS1, through interaction of the SH3 domains with SOS1 and the SH2 domain with phosphorylated MUC1. Interacts with PRNP (By similarity). Interacts with RALGPS1 and with HCST. Interacts (via SH3 domain) with HEV ORF3 protein. Interacts with GAPT.,

Background

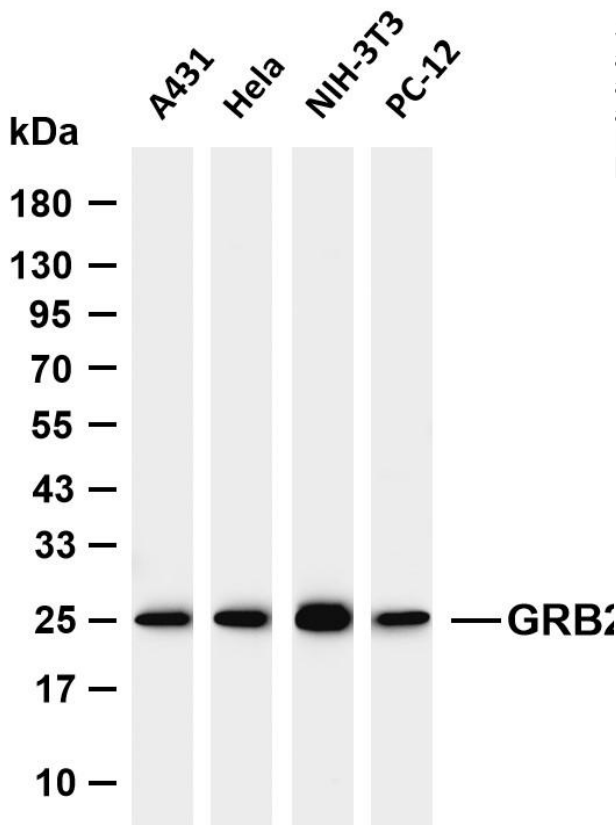
The protein encoded by this gene binds the epidermal growth factor receptor and contains one SH2 domain and two SH3 domains. Its two SH3 domains direct complex formation with proline-rich regions of other proteins, and its SH2 domain binds tyrosine phosphorylated sequences. This gene is similar to the Sem5 gene of *C.elegans*, which is involved in the signal transduction pathway. Two alternatively spliced transcript variants encoding different isoforms have been found for this gene. [provided by RefSeq, Jul 2008],

matters needing attention

Avoid repeated freezing and thawing!

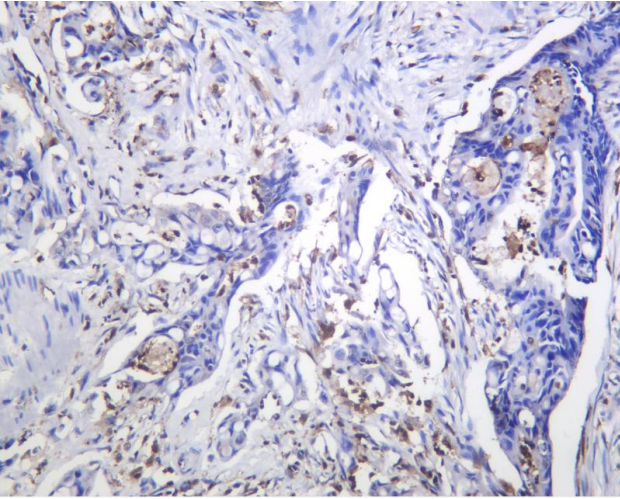
Usage suggestions

This product can be used in immunological reaction related experiments. For more information, please consult technical personnel.

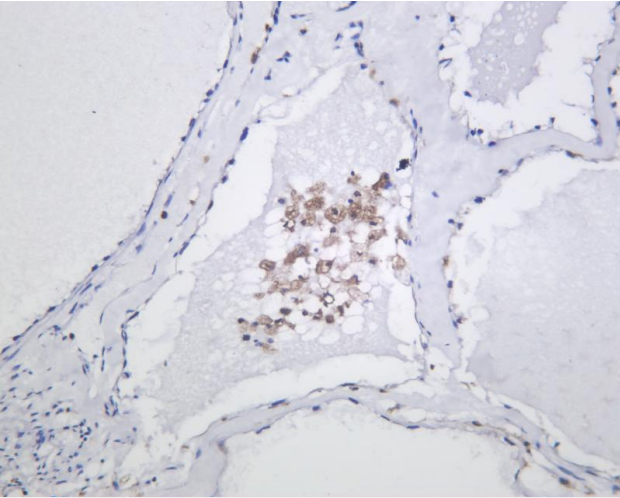


Various whole cell lysates were separated by 4-20% SDS-PAGE, and the membrane was blotted with anti-GRB2 antibody. The HRP-conjugated Goat anti-Rabbit IgG (H + L) antibody was used to detect the antibody. Lane 1: A431 Lane 2: HeLa Lane 3: NIH-3T3 Lane 4: PC-12 Predicted band size: 25kDa Observed band size: 25kDa





Human colon carcinoma was stained with anti-GRB2 Rabbit antibody



Human ovarian carcinoma was stained with anti-GRB2 Rabbit antibody

