



# Transglutaminase 2 Rabbit mAb

<b>Catalog No</b>	YP-rAb-17175
<b>Isotype</b>	IgG
<b>Reactivity</b>	Human,Mouse
<b>Applications</b>	WB,IHC,IF,IP,ELISA
<b>Gene Name</b>	TGM2
<b>Protein Name</b>	Protein-glutamine gamma-glutamyltransferase 2
<b>Purification Process</b>	Protein A
<b>Specificity</b>	Endogenous
<b>Formulation</b>	PBS, 50% glycerol, 0.05% Proclin 300, 0.05%BSA
<b>Source</b>	Monoclonal, Rabbit,IgG
<b>Dilution</b>	IHC 1:200-1:1000; WB 1:2000-1:10000; IF 1:200-1:1000; ELISA 1:5000-1:20000; IP 1:50-1:200; Note: For IHC, we suggest antigen retrieval with TE buffer pH 9.0
<b>Concentration</b>	0.5 mg/ml
<b>Purity</b>	≥90%
<b>Storage Stability</b>	-15° C to -25° C/1 year(Do not lower than -25° C)
<b>Synonyms</b>	TGM2 ; Protein-glutamine gamma-glutamyltransferase 2 ; Tissue transglutaminase ; Transglutaminase C ; TG ; C ; TGC ; TGase C ; Transglutaminase H ; TGase H ; Transglutaminase-2 ; TGase-2
<b>Observed Band</b>	77kD
<b>Calculated Molecular Weight</b>	77kD
<b>Cell Pathway</b>	Cytoplasm, cytosol . Nucleus . Chromosome . Secreted, extracellular space, extracellular matrix . Cell membrane . Mitochondrion . Mainly localizes to the cytosol (PubMed:9575137). Present at much lower level in the nucleus and chromatin (PubMed:9575137). Also secreted via a non-classical secretion pathway to the extracellular matrix (PubMed:27270573). .; [Isoform 2]: Cytoplasm, perinuclear region .
<b>Tissue Specificity</b>	Brain,Colon adenocarcinoma,Endothelial cell,Kidney,Liver,Lymph node,Ovarian carcino
<b>Function</b>	Catalytic activity:Protein glutamine + alkylamine = protein N(5)-alkylglutamine + NH(3).,cofactor:Binds 1 calcium ion per subunit.,Disease:Defects in TGM2 are involved in early-onset diabetes type 2.,Function:Catalyzes the cross-linking of proteins and the conjugation of polyamines to proteins.,induction:By retinoic acid.,online information:Tissue transglutaminase entry,similarity:Belongs to the transglutaminase superfamily. Transglutaminase family.,subunit:Monomer.,

## 杭州臻优品生物科技有限公司

### 热销产品:

蛋白、一抗、抗体对、ELISA试剂盒、生化试剂盒  
CCK8试剂盒、QPCR检测试剂盒

### 检测服务:

ELISA检测及定制服务 | 生化检测 | PCR、QPCR检测 | WB检测  
| CO-IP检测 | 切片 | 染色 | 免疫组化 | 免疫荧光 | 透射电镜全套  
| 宏基因组、转录组、基因组、蛋白组、代谢组测序



关注官网



关注客服



## Background

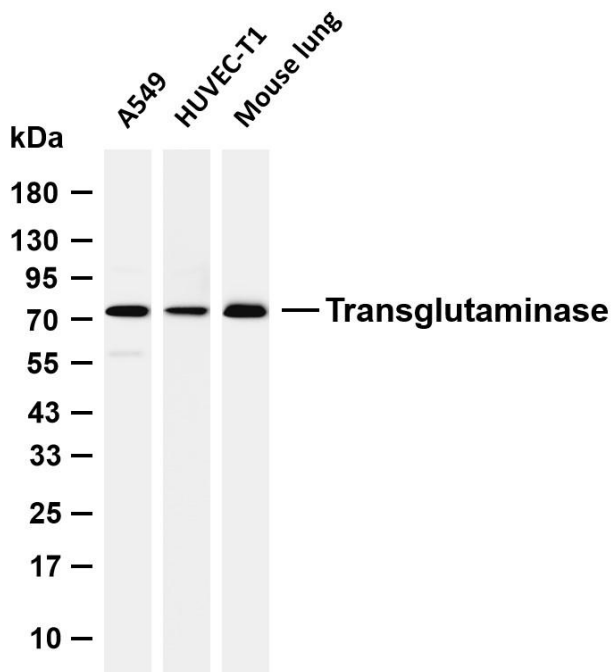
Transglutaminases are enzymes that catalyze the crosslinking of proteins by epsilon-gamma glutamyl lysine isopeptide bonds. While the primary structure of transglutaminases is not conserved, they all have the same amino acid sequence at their active sites and their activity is calcium-dependent. The protein encoded by this gene acts as a monomer, is induced by retinoic acid, and appears to be involved in apoptosis. Finally, the encoded protein is the autoantigen implicated in celiac disease. Two transcript variants encoding different isoforms have been found for this gene. [provided by RefSeq, Jul 2008],

## matters needing attention

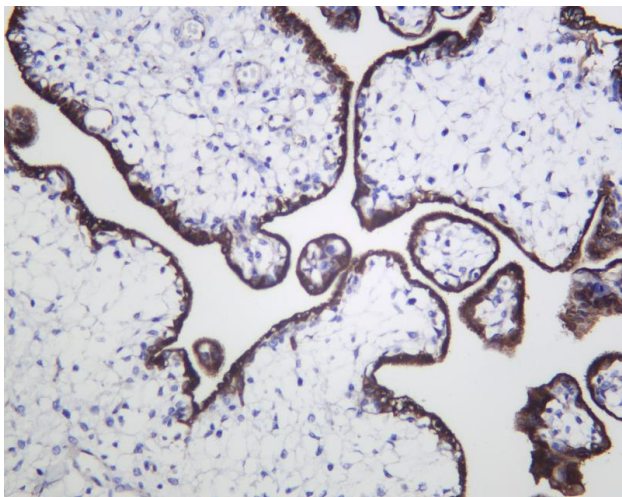
Avoid repeated freezing and thawing!

## Usage suggestions

This product can be used in immunological reaction related experiments. For more information, please consult technical personnel.



Various whole cell lysates were separated by 4-20% SDS-PAGE, and the membrane was blotted with anti-Transglutaminase 2 antibody. The HRP-conjugated Goat anti-Rabbit IgG (H + L) antibody was used to detect the antibody. Lane 1: A549 Lane 2: HUVEC-T1 Lane 3: Mouse lung Predicted band size: 77kDa Observed band size: 77kDa



Human placenta was stained with anti-Transglutaminase 2 Rabbit antibody

## 杭州臻优品生物科技有限公司

### 热销产品:

蛋白、一抗、抗体对、ELISA试剂盒、生化试剂盒  
CCK8试剂盒、QPCR检测试剂盒

### 检测服务:

ELISA检测及定制服务 | 生化检测 | PCR、QPCR检测 | WB检测  
ICO-IP检测 | 切片 | 染色 | 免疫组化 | 免疫荧光 | 透射电镜全套  
| 宏基因组、转录组、基因组、蛋白组、代谢组测序



关注官网



关注客服