



Rad50 Rabbit mAb

Catalog No	YP-rAb-17169
Isotype	IgG
Reactivity	Human,Mouse,Rat
Applications	WB,IHC,IF,ELISA
Gene Name	RAD50
Protein Name	DNA repair protein RAD50
Purification Process	Protein A
Specificity	Endogenous
Formulation	PBS, 50% glycerol, 0.05% Proclin 300, 0.05%BSA
Source	Monoclonal, Rabbit,IgG
Dilution	IHC 1:100-1:500; WB 1:2000-1:10000; IF 1:200-1:1000; ELISA 1:5000-1:20000; Note: For IHC, we suggest antigen retrieval with TE buffer pH 9.0
Concentration	0.5 mg/ml
Purity	≥90%
Storage Stability	-15° C to -25° C/1 year(Do not lower than -25° C)
Synonyms	RAD50 ; DNA repair protein RAD50 ; hRAD50
Observed Band	154kD
Calculated Molecular Weight	154kD
Cell Pathway	Nucleus . Chromosome, telomere . Chromosome . Localizes to discrete nuclear foci after treatment with genotoxic agents. .
Tissue Specificity	Expressed at very low level in most tissues, except in testis where it is expressed at higher level. Expressed in fibroblasts.
Function	cofactor: Binds 1 zinc ion per homodimer., Domain: The zinc-hook, which separates the large intramolecular coiled coil regions, contains 2 Cys residues that coordinate one molecule of zinc with the help of the 2 Cys residues of the zinc-hook of another RAD50 molecule, thereby forming a V-shaped homodimer. The two heads of the homodimer, which constitute the ATP-binding domain, interact with the MRE11A homodimer., Function: Component of the MRN complex, which plays a central role in double-strand break (DSB) repair, DNA recombination, maintenance of telomere integrity and meiosis. The complex possesses single-strand endonuclease activity and double-strand-specific 3'-5' exonuclease activity, which are provided by MRE11A. RAD50 may be required to bind DNA ends and hold them in close proximity. This could facilitate searches for short or long regions of sequence homology in the recombining DNA templates, and may also stimulate the activity of DNA ligases and/or restrict the nuclease

杭州臻优品生物科技有限公司

热销产品:

蛋白、一抗、抗体对、ELISA试剂盒、生化试剂盒
CCK8试剂盒、QPCR检测试剂盒

检测服务:

ELISA检测及定制服务 | 生化检测 | PCR、QPCR检测 | WB检测
ICO-IP检测 | 切片 | 染色 | 免疫组化 | 免疫荧光 | 透射电镜全套
| 宏基因组、转录组、基因组、蛋白组、代谢组测序



关注官网



关注客服



activity of MRE11A to prevent nucleolytic degradation past a given point. The complex may also be required for DNA damage signaling via activation of the ATM kinase. In telomeres the MRN complex may modulate t-loop formation. In case of infection by adenovirus E4, the MRN complex is inactivated and degraded by viral oncoproteins, thereby preventing concatenation of viral genomes in infected cells. PTM: Phosphorylated upon DNA damage, probably by ATM or ATR. sequence Caution: Contaminating sequence. Potential poly-A sequence. similarity: Belongs to the SMC family. RAD50 subfamily. similarity: Contains 1 zinc-hook domain. subcellular location: Localizes to discrete nuclear foci after treatment with genotoxic agents. subunit: Component of the MRN complex composed of two heterodimers RAD50/MRE11A associated with a single NBN. Component of the BASC complex, at least composed of BRCA1, MSH2, MSH6, MLH1, ATM, BLM, RAD50, MRE11A and NBN. Found in a complex with TERF2. Interacts with RINT1. Interacts with BRCA1 via its N-terminal domain. Interacts with DCLRE1C/Artemis. tissue specificity: Expressed at very low level in most tissues, except in testis where it is expressed at higher level. Expressed in fibroblasts.

Background

RAD50 double strand break repair protein(RAD50) Homo sapiens The protein encoded by this gene is highly similar to Saccharomyces cerevisiae Rad50, a protein involved in DNA double-strand break repair. This protein forms a complex with MRE11 and NBS1. The protein complex binds to DNA and displays numerous enzymatic activities that are required for nonhomologous joining of DNA ends. This protein, cooperating with its partners, is important for DNA double-strand break repair, cell cycle checkpoint activation, telomere maintenance, and meiotic recombination. Knockout studies of the mouse homolog suggest this gene is essential for cell growth and viability. Mutations in this gene are the cause of Nijmegen breakage syndrome-like disorder. [provided by RefSeq, Apr 2010],

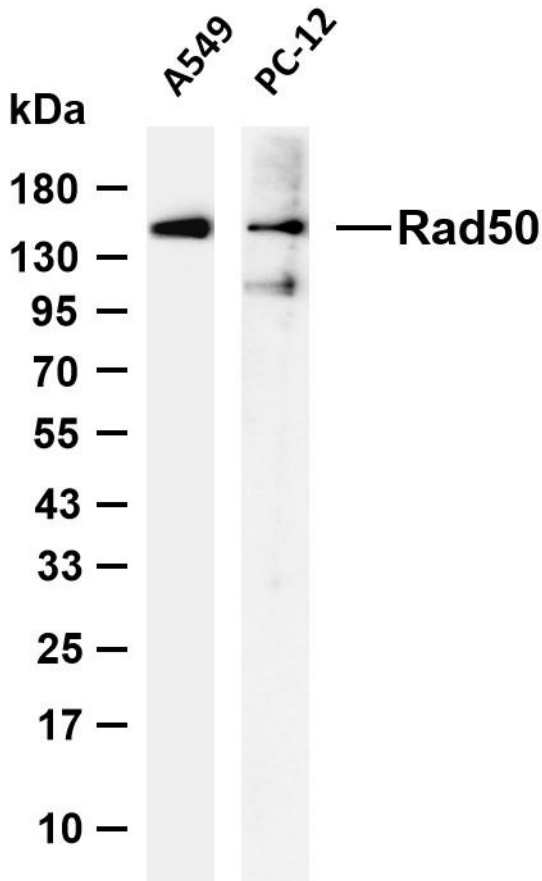
matters needing attention

Avoid repeated freezing and thawing!

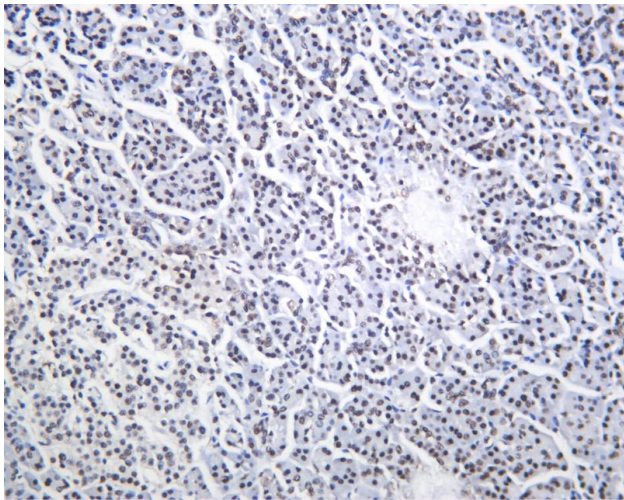
Usage suggestions

This product can be used in immunological reaction related experiments. For more information, please consult technical personnel.





Various whole cell lysates were separated by 4-20% SDS-PAGE, and the membrane was blotted with anti-Rad50 antibody. The HRP-conjugated Goat anti-Rabbit IgG (H + L) antibody was used to detect the antibody. Lane 1: A549 Lane 2: PC-12 Predicted band size: 154kDa Observed band size: 154kDa



Human pancreas was stained with anti-Rad50 Rabbit antibody

杭州臻优品生物科技有限公司

热销产品:

蛋白、一抗、抗体对、ELISA试剂盒、生化试剂盒
CCK8试剂盒、QPCR检测试剂盒

检测服务:

ELISA检测及定制服务 | 生化检测 | PCR、QPCR检测 | WB检测
ICO-IP检测 | 切片 | 染色 | 免疫组化 | 免疫荧光 | 透射电镜全套
| 宏基因组、转录组、基因组、蛋白组、代谢组测序



关注官网



关注客服