



# SMCA5 Rabbit mAb

<b>Catalog No</b>	YP-rAb-17166
<b>Isotype</b>	IgG
<b>Reactivity</b>	Human,Mouse,Rat
<b>Applications</b>	WB,IF,ELISA
<b>Gene Name</b>	SMARCA5 SNF2H WCRF135
<b>Protein Name</b>	SMCA5
<b>Purification Process</b>	Protein A
<b>Specificity</b>	Endogenous
<b>Formulation</b>	PBS, 50% glycerol, 0.05% Proclin 300, 0.05%BSA
<b>Source</b>	Monoclonal, Rabbit,IgG
<b>Dilution</b>	WB 1:2000-1:10000; IF 1:200-1:1000; ELISA 1:5000-1:20000;
<b>Concentration</b>	0.5 mg/ml
<b>Purity</b>	≥90%
<b>Storage Stability</b>	-15° C to -25° C/1 year(Do not lower than -25° C)
<b>Synonyms</b>	
<b>Observed Band</b>	122kD
<b>Calculated Molecular Weight</b>	122kD
<b>Cell Pathway</b>	Nucleus . Chromosome . Localizes to mitotic chromosomes (PubMed:12972596). Co-localizes with RSF1 in the nucleus (PubMed:12972596). Co-localizes with PCNA at replication foci during S phase (PubMed:15543136). Co-localizes with BAZ1B/WSTF at replication foci during late-S phase (PubMed:15543136). Recruited to DNA damage sites following interaction with SIRT6 (PubMed:23911928) . .
<b>Tissue Specificity</b>	Ubiquitously expressed.
<b>Function</b>	developmental stage:Overexpressed in CD34-positive erythrocyte progenitor cells in acute myeloid leukemia. Down-regulation correlates with hematologic remission following chemotherapy. Function:Helicase that possesses intrinsic ATP-dependent nucleosome-remodeling activity. Complexes containing SMARCA5 are capable of forming ordered nucleosome arrays on chromatin; this may require intact histone H4 tails. Also required for replication of pericentric heterochromatin in S-phase specifically in conjunction with BAZ1A. Probably plays a role in repression of polI dependent transcription of the rDNA locus, through the recruitment of the SIN3/HDAC1 corepressor complex to the rDNA





promoter. Essential component of the WICH complex, a chromatin remodeling complex that mobilizes nucleosomes and reconfigures irregular chromatin to a regular nucleosomal array structure. The WICH complex regulates the transcription of various genes, has a role in RNA polymerase I and RNA polymerase III transcription, mediates the histone H2AX phosphorylation at 'Tyr-142', and is involved in the maintenance of chromatin structures during DNA replication processes. similarity: Belongs to the SNF2/RAD54 helicase family. ISWI subfamily. similarity: Contains 1 helicase ATP-binding domain. similarity: Contains 1 helicase C-terminal domain. similarity: Contains 2 SANT domains. subunit: Catalytic subunit of the four known chromatin-remodeling complexes: CHRAC, RSF, ACF/WCRF, and WICH. Each complex contains subunits which may regulate the specificity or catalytic activity of SMARCA5. ACF/WCRF contains BAZ1A; CHRAC contains BAZ1A, CHRAC1, and POLE3; RSF contains RSF1; WICH contains BAZ1B/WSTF. SMARCA5 is the catalytic subunit of the NoRC chromatin-remodeling complex, which also contains BAZ2A and of SMARCA5/cohesin/NuRD complexes. The BAZ2A subunit of NoRC also interacts with DNMT1, DNMT3B and HDAC1, which allows NoRC to actively suppress rDNA transcription by a combination of nucleosome remodeling, histone deacetylation, and DNA methylation Component of the B-WICH complex, at least composed of SMARCA5/SNF2H, BAZ1B/WSTF, SF3B1, DEK, MYO1C, ERCC6, MYBBP1A and DDX21. Interacts with MYO1C. tissue specificity: Ubiquitously expressed.

### Background

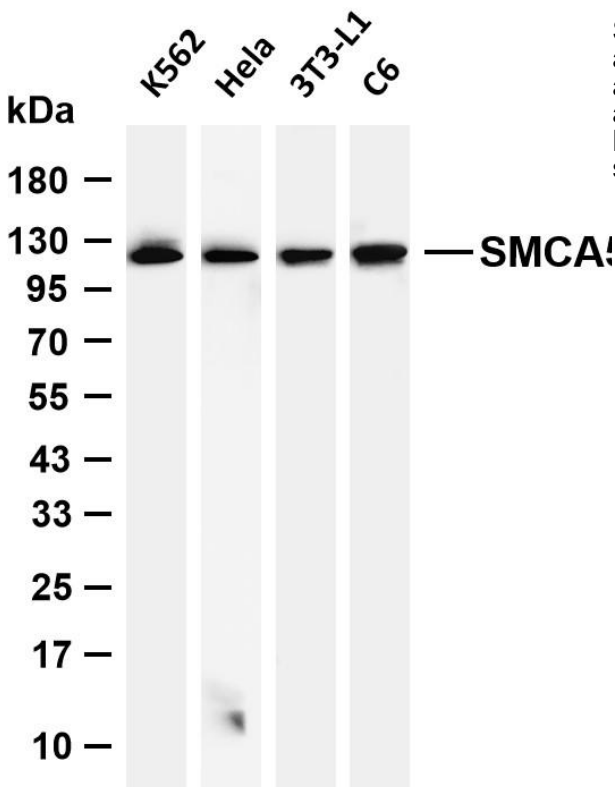
The protein encoded by this gene is a member of the SWI/SNF family of proteins. Members of this family have helicase and ATPase activities and are thought to regulate transcription of certain genes by altering the chromatin structure around those genes. The protein encoded by this gene is a component of the chromatin remodeling and spacing factor RSF, a facilitator of the transcription of class II genes by RNA polymerase II. The encoded protein is similar in sequence to the Drosophila ISWI chromatin remodeling protein. [provided by RefSeq, Jul 2008],

### matters needing attention

Avoid repeated freezing and thawing!

### Usage suggestions

This product can be used in immunological reaction related experiments. For more information, please consult technical personnel.



Various whole cell lysates were separated by 4-20% SDS-PAGE, and the membrane was blotted with anti-SMCA5 antibody. The HRP-conjugated Goat anti-Rabbit IgG (H + L) antibody was used to detect the antibody. Lane 1: K562 Lane 2: HeLa Lane 3: 3T3-L1 Lane 4: C6 Predicted band size: 122kDa Observed band size: 122kDa





---

---

---

---

## 杭州臻优品生物科技有限公司

### 热销产品:

蛋白、一抗、抗体对、ELISA试剂盒、生化试剂盒  
CCK8试剂盒、QPCR检测试剂盒

### 检测服务:

ELISA检测及定制服务 | 生化检测 | PCR、QPCR检测 | WB检测  
ICO-IP检测 | 切片 | 染色 | 免疫组化 | 免疫荧光 | 透射电镜全套  
| 宏基因组、转录组、基因组、蛋白组、代谢组测序



关注官网



关注客服