



CD26 Rabbit mAb

Catalog No	YP-rAb-17159
Isotype	IgG
Reactivity	Human,Mouse,Rat
Applications	WB,IHC,IF,ELISA
Gene Name	DPP4 ADCP2 CD26
Protein Name	Dipeptidyl peptidase 4 (ADABP) (Adenosine deaminase complexing protein 2) (ADCP-2) (Dipeptidyl peptidase IV) (DPP IV) (T-cell activation antigen CD26) (TP103) (CD antigen CD26)
Purification Process	Protein A
Specificity	Endogenous
Formulation	PBS, 50% glycerol, 0.05% Proclin 300, 0.05%BSA
Source	Monoclonal, Rabbit,IgG
Dilution	IHC 1:400-1:2000; WB 1:2000-1:10000; IF 1:200-1:1000; ELISA 1:5000-1:20000; Note: For IHC, we suggest antigen retrieval with TE buffer pH 9.0
Concentration	0.5 mg/ml
Purity	≥90%
Storage Stability	-15° C to -25° C/1 year(Do not lower than -25° C)
Synonyms	DPP4 ; ADCP2 ; CD26 ; Dipeptidyl peptidase 4 ; ADABP ; Adenosine deaminase complexing protein 2 ; ADCP-2 ; Dipeptidyl peptidase IV ; DPP IV ; T-cell activation antigen CD26 ; TP103 ; CD26
Observed Band	90kD
Calculated Molecular Weight	88kD
Cell Pathway	[Dipeptidyl peptidase 4 soluble form]: Secreted . Detected in the serum and the seminal fluid. .; Cell membrane ; Single-pass type II membrane protein. Apical cell membrane ; Single-pass type II membrane protein. Cell projection, invadopodium membrane ; Single-pass type II membrane protein. Cell projection, lamellipodium membrane ; Single-pass type II membrane protein. Cell junction . Membrane raft . Translocated to the apical membrane through the concerted action of N- and O-Glycans and its association with lipid microdomains containing cholesterol and sphingolipids (PubMed:11773049). Redistributed to membrane rafts in T-cell in an interleukin-12-dependent activation (PubMed:12676959). Its interaction with CAV1 is necessary for its translocation to membrane rafts (PubMed:17287217). Colocalized with PTPRC in membrane rafts (PubMed:12676959). Colocalized with FAP in invadopodia and lamellipodia of migratory activated endothelial cells in collagenous matrix. Colocalized with FAP on endothelial cells of capillary-like microvessels but not large vessels within invasive breast ductal carcinoma (PubMed:16651416). Colocalized with ADA at the cell junction in

杭州臻优品生物科技有限公司

热销产品:

蛋白、一抗、抗体对、ELISA试剂盒、生化试剂盒
CCK8试剂盒、QPCR检测试剂盒

检测服务:

ELISA检测及定制服务 | 生化检测 | PCR、QPCR检测 | WB检测
ICO-IP检测 | 切片 | 染色 | 免疫组化 | 免疫荧光 | 透射电镜全套
| 宏基因组、转录组、基因组、蛋白组、代谢组测序



关注官网

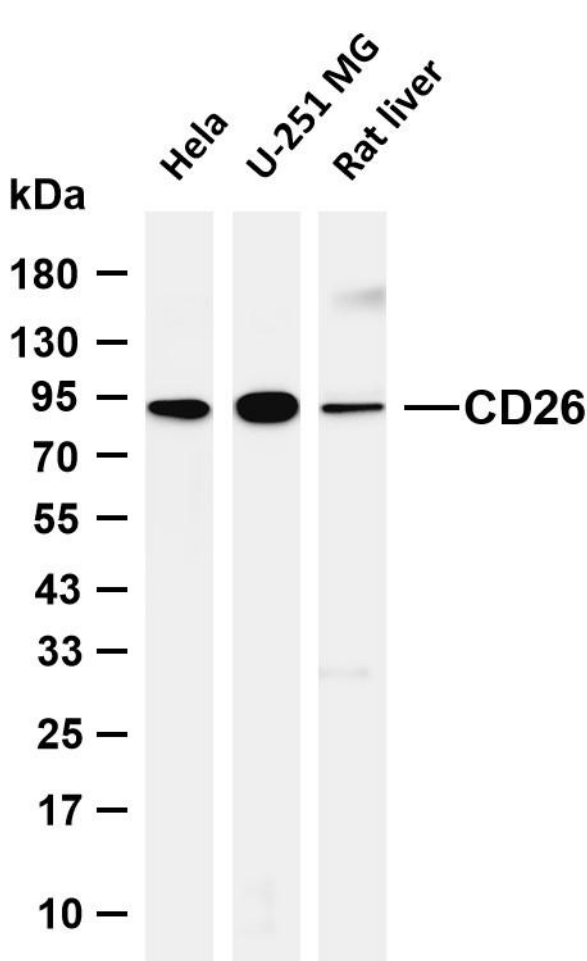


关注客服



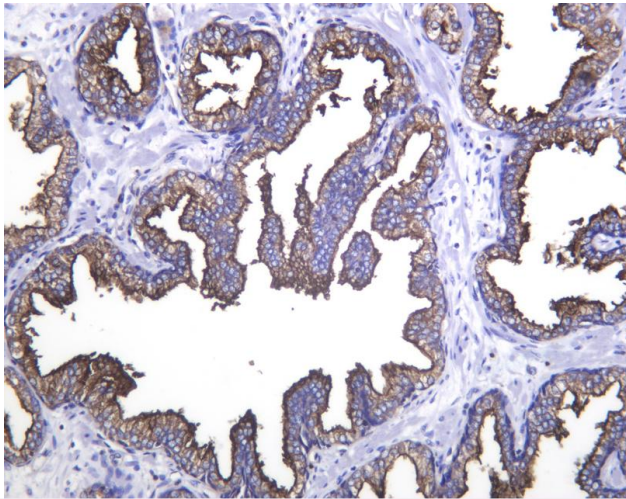
lymphocyte-epithelial cell adhesion (PubMed:11772392). Colocalized with IGF2R in internalized cytoplasmic vesicles adjacent to the cell surface (PubMed:10900005).

Tissue Specificity	Expressed specifically in lymphatic vessels but not in blood vessels in the skin, small intestine, esophagus, ovary, breast and prostate glands. Not detected in lymphatic vessels in the lung, kidney, uterus, liver and stomach (at protein level). Expressed in the poorly differentiated crypt cells of the small intestine as well as in the mature villous cells. Expressed at very low levels in the colon.
Function	Catalytic activity:Release of an N-terminal dipeptide, Xaa-Yaa- -Zaa-, from a polypeptide, preferentially when Yaa is Pro, provided Zaa is neither Pro nor hydroxyproline.,Function:Removes N-terminal dipeptides sequentially from polypeptides having unsubstituted N-termini provided that the penultimate residue is proline. Plays a role in T-cell activation.,online information:Dipeptidyl peptidase-4 entry,PTM:The soluble form (SDPP) derives from the membrane form (MDPP) by proteolytic processing.,similarity:Belongs to the peptidase S9B family. DPPIV subfamily.,subunit:Homodimer or heterodimer with Seprase (FAP).,tissue specificity:Expressed in the poorly differentiated crypt cells of the small intestine as well as in the mature villous cells. Expressed at very low levels in the colon.,
Background	The protein encoded by this gene is identical to adenosine deaminase complexing protein-2, and to the T-cell activation antigen CD26. It is an intrinsic membrane glycoprotein and a serine exopeptidase that cleaves X-proline dipeptides from the N-terminus of polypeptides. [provided by RefSeq, Jul 2008],
matters needing attention	Avoid repeated freezing and thawing!
Usage suggestions	This product can be used in immunological reaction related experiments. For more information, please consult technical personnel.



Various whole cell lysates were separated by 4-20% SDS-PAGE, and the membrane was blotted with anti-CD26 antibody. The HRP-conjugated Goat anti-Rabbit IgG (H + L) antibody was used to detect the antibody. Lane 1: HeLa Lane 2: U-251 MG Lane 3: Rat liver Predicted band size: 88kDa Observed band size: 90kDa





Human prostate was stained with anti-CD26 Rabbit antibody

杭州臻优品生物科技有限公司

热销产品:

蛋白、一抗、抗体对、ELISA试剂盒、生化试剂盒
CCK8试剂盒、QPCR检测试剂盒

检测服务:

ELISA检测及定制服务 | 生化检测 | PCR、QPCR检测 | WB检测
ICO-IP检测 | 切片 | 染色 | 免疫组化 | 免疫荧光 | 透射电镜全套
| 宏基因组、转录组、基因组、蛋白组、代谢组测序



关注官网



关注客服