



IL-7R Rabbit mAb

Catalog No	YP-rAb-17156
Isotype	IgG
Reactivity	Human,Mouse,Rat
Applications	WB,IF,ELISA
Gene Name	IL7R
Protein Name	Interleukin-7 receptor subunit alpha
Purification Process	Protein A
Specificity	Endogenous
Formulation	PBS, 50% glycerol, 0.05% Proclin 300, 0.05%BSA
Source	Monoclonal, Rabbit,IgG
Dilution	WB 1:2000-1:10000; IF 1:200-1:1000; ELISA 1:5000-1:20000;
Concentration	0.5 mg/ml
Purity	≥90%
Storage Stability	-15° C to -25° C/1 year(Do not lower than -25° C)
Synonyms	IL7R ; Interleukin-7 receptor subunit alpha ; IL-7 receptor subunit alpha ; IL-7R subunit alpha ; IL-7R-alpha ; IL-7RA ; CDw127 ; CD antigen CD127
Observed Band	70kD
Calculated Molecular Weight	52kD
Cell Pathway	[Isoform 1]: Cell membrane; Single-pass type I membrane protein.; [Isoform 3]: Cell membrane; Single-pass type I membrane protein.; [Isoform 4]: Secreted.
Tissue Specificity	B-cell,Epithelium,Spleen,Testis,
Function	Disease:A genetic variation in transmembrane domain of IL7R is associated with susceptibility to multiple sclerosis (MS) [MIM:126200]. Overtransmission of the major 'C' allele coding for Thr-244 are detected in offspring affected with multiple sclerosis. In vitro analysis of transcripts from minigenes containing either 'C' allele (Thr-244) or 'T' allele (Ile-244) shows that the 'C' allele results in an approximately two-fold increase in the skipping of exon 6, leading to increased production of a soluble form of IL7R. Thus, the multiple sclerosis associated 'C' risk allele of IL7R would probably decrease membrane-bound expression of IL7R. As this risk allele is common in the general population, some additional triggers are probably required for the development and progression of MS.,Disease:Defects in IL7R are a cause of autosomal recessive severe combined immunodeficiency T-cell-negative/B-cell-positive/NK cell-positive (T(-)/B(+)/NK(+)) SCID)





[MIM:608971]. SCID refers to a genetically and clinically group of rare congenital disorders characterized by impairment of both humoral and cell-mediated immunity, leukopenia, and low or absent antibody levels. Patients with SCID present in infancy with recurrent, persistent infections by opportunistic organisms, including *Candida albicans*, *Pneumocystis carinii*, and cytomegalovirus, among many others. The common characteristic of all types of SCID is absence of T-cell-mediated cellular immunity due to a defect in T-cell development. Domain: The box 1 motif is required for JAK interaction and/or activation. Domain: The WSXWS motif appears to be necessary for proper protein folding and thereby efficient intracellular transport and cell-surface receptor binding. Function: Receptor for interleukin-7. Also acts as a receptor for thymic stromal lymphopoietin (TSLP). online information: IL7R mutation db, sequence Caution: Contaminating sequence. Potential poly-A sequence. similarity: Belongs to the type I cytokine receptor family. Type 4 subfamily. similarity: Contains 1 fibronectin type-III domain. subunit: The IL7 receptor is an heterodimer of IL7R and IL2RG. The TSLP receptor is an heterodimer of CRLF2 and IL7R.

Background

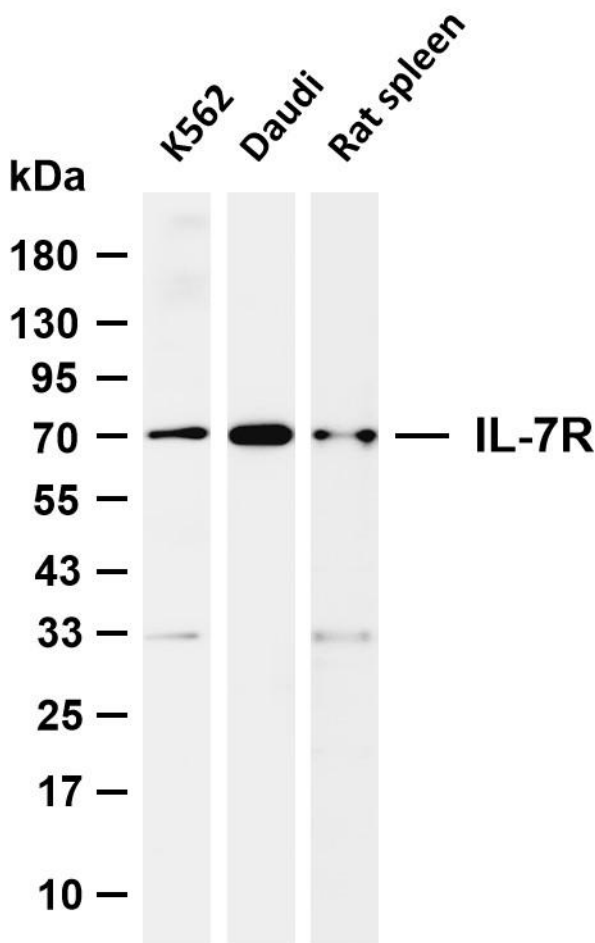
The protein encoded by this gene is a receptor for interleukin 7 (IL7). The function of this receptor requires the interleukin 2 receptor, gamma chain (IL2RG), which is a common gamma chain shared by the receptors of various cytokines, including interleukins 2, 4, 7, 9, and 15. This protein has been shown to play a critical role in V(D)J recombination during lymphocyte development. Defects in this gene may be associated with severe combined immunodeficiency (SCID). Alternatively spliced transcript variants have been found. [provided by RefSeq, Dec 2015],

matters needing attention

Avoid repeated freezing and thawing!

Usage suggestions

This product can be used in immunological reaction related experiments. For more information, please consult technical personnel.



Various whole cell lysates were separated by 4-20% SDS-PAGE, and the membrane was blotted with anti-IL-7R antibody. The HRP-conjugated Goat anti-Rabbit IgG (H + L) antibody was used to detect the antibody. Lane 1: K562 Lane 2: Daudi Lane 3: Rat spleen Predicted band size: 52kDa Observed band size: 70kDa





杭州臻优品生物科技有限公司

热销产品:

蛋白、一抗、抗体对、ELISA试剂盒、生化试剂盒
CCK8试剂盒、QPCR检测试剂盒

检测服务:

ELISA检测及定制服务 | 生化检测 | PCR、QPCR检测 | WB检测
ICO-IP检测 | 切片 | 染色 | 免疫组化 | 免疫荧光 | 透射电镜全套
| 宏基因组、转录组、基因组、蛋白组、代谢组测序



关注官网



关注客服