



# SFRS3 Rabbit mAb

<b>Catalog No</b>	YP-rAb-17150
<b>Isotype</b>	IgG
<b>Reactivity</b>	Human,Mouse,Rat
<b>Applications</b>	WB,IHC,IF,ELISA
<b>Gene Name</b>	SRSF3
<b>Protein Name</b>	Serine/arginine-rich splicing factor 3
<b>Purification Process</b>	Protein A
<b>Specificity</b>	Endogenous
<b>Formulation</b>	PBS, 50% glycerol, 0.05% Proclin 300, 0.05%BSA
<b>Source</b>	Monoclonal, Rabbit,IgG
<b>Dilution</b>	IHC 1:200-1:1000; WB 1:2000-1:10000; IF 1:200-1:1000; ELISA 1:5000-1:20000; Note: For IHC, we suggest antigen retrieval with TE buffer pH 9.0
<b>Concentration</b>	0.5 mg/ml
<b>Purity</b>	≥90%
<b>Storage Stability</b>	-15° C to -25° C/1 year(Do not lower than -25° C)
<b>Synonyms</b>	SRSF3 ; SFRS3 ; SRP20 ; Serine/arginine-rich splicing factor 3 ; Pre-mRNA-splicing factor SRP20 ; Splicing factor ; arginine/serine-rich 3
<b>Observed Band</b>	22kD
<b>Calculated Molecular Weight</b>	19kD
<b>Cell Pathway</b>	Nucleus . Nucleus speckle . Cytoplasm . Recruited to nuclear speckles following interaction with YTHDC1. .
<b>Tissue Specificity</b>	Brain,Epithelium,Placenta,Tongue,
<b>Function</b>	May be involved in RNA processing in relation with cellular proliferation and/or maturation.,PTM:Extensively phosphorylated on serine residues in the RS domain.,similarity:Belongs to the splicing factor SR family.,similarity:Contains 1 RRM (RNA recognition motif) domain.,subunit:Interacts with CPSF6, RBMY1A1 and SFRS12.,
<b>Background</b>	The protein encoded by this gene is a member of the serine/arginine (SR)-rich family of pre-mRNA splicing factors, which constitute part of the spliceosome. Each of these factors contains an RNA recognition motif (RRM) for binding RNA and an RS domain for binding other proteins. The RS domain is rich in serine and arginine residues and facilitates interaction between different SR splicing factors. In addition to being critical for mRNA splicing, the SR proteins have also been





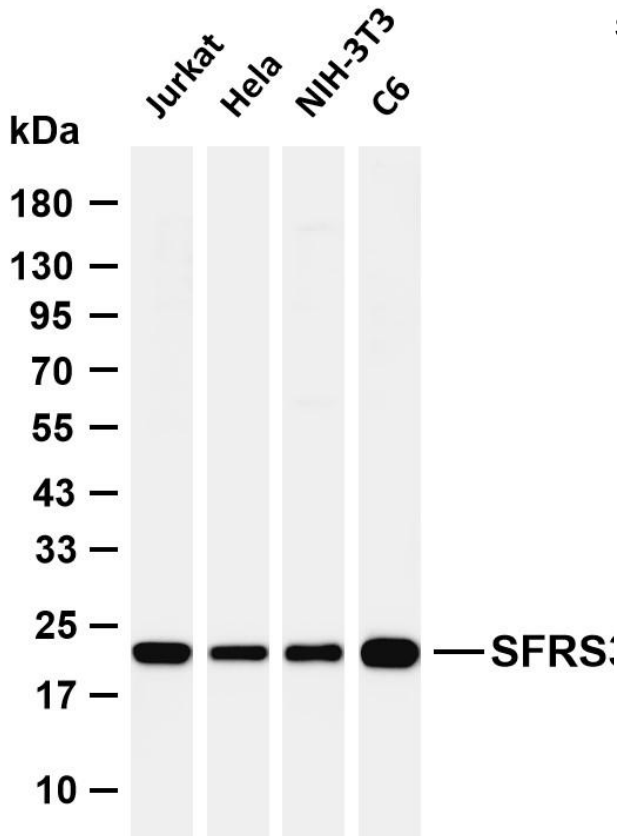
shown to be involved in mRNA export from the nucleus and in translation. Two transcript variants, one protein-coding and the other non-coding, have been found for this gene. [provided by RefSeq, Sep 2010],

**matters needing attention**

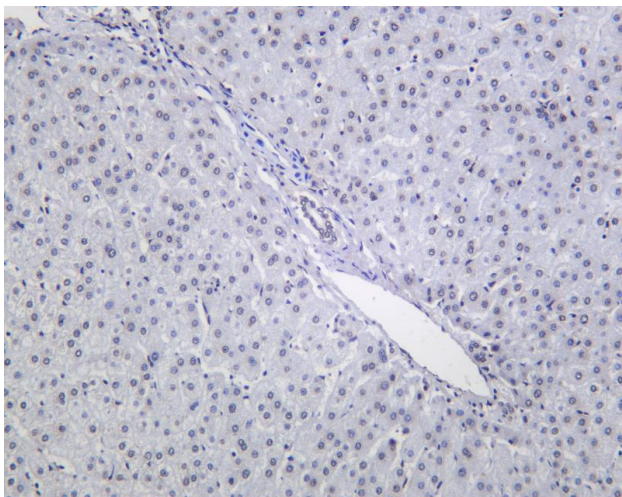
Avoid repeated freezing and thawing!

**Usage suggestions**

This product can be used in immunological reaction related experiments. For more information, please consult technical personnel.



Various whole cell lysates were separated by 4-20% SDS-PAGE, and the membrane was blotted with anti-SF



Human liver was stained with anti-SF

杭州臻优品生物科技有限公司

热销产品:

蛋白、一抗、抗体对、ELISA试剂盒、生化试剂盒  
CCK8试剂盒、QPCR检测试剂盒

检测服务:

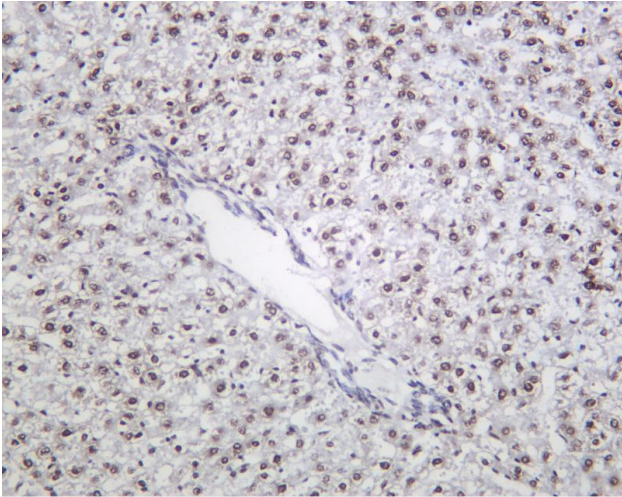
ELISA检测及定制服务 | 生化检测 | PCR、QPCR检测 | WB检测  
ICO-IP检测 | 切片 | 染色 | 免疫组化 | 免疫荧光 | 透射电镜全套  
| 宏基因组、转录组、基因组、蛋白组、代谢组测序



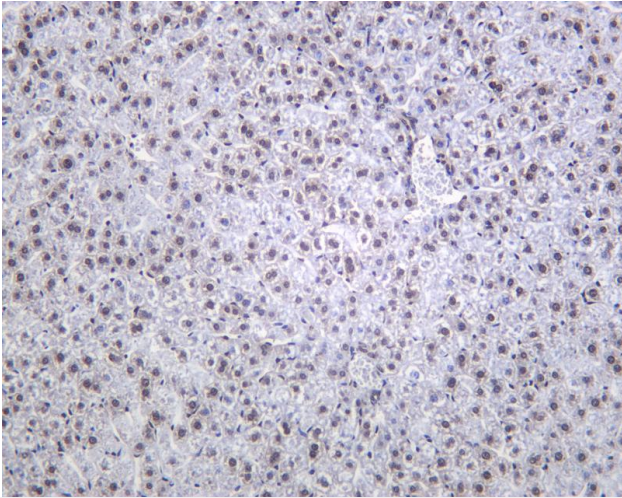
关注官网



关注客服



Mouse liver was stained with anti-SF



Rat liver was stained with anti-SFRS3 Rabbit antibody

