



# Lyn Rabbit mAb

<b>Catalog No</b>	YP-rAb-17149
<b>Isotype</b>	IgG
<b>Reactivity</b>	Human,Mouse,Rat
<b>Applications</b>	WB,IF,ELISA
<b>Gene Name</b>	LYN
<b>Protein Name</b>	Tyrosine-protein kinase Lyn
<b>Purification Process</b>	Protein A
<b>Specificity</b>	Endogenous
<b>Formulation</b>	PBS, 50% glycerol, 0.05% Proclin 300, 0.05%BSA
<b>Source</b>	Monoclonal, Rabbit,IgG
<b>Dilution</b>	WB 1:2000-1:10000; IF 1:200-1:1000; ELISA 1:5000-1:20000;
<b>Concentration</b>	0.5 mg/ml
<b>Purity</b>	≥90%
<b>Storage Stability</b>	-15° C to -25° C/1 year(Do not lower than -25° C)
<b>Synonyms</b>	LYN ; JTK8 ; Tyrosine-protein kinase Lyn ; Lck/Yes-related novel protein tyrosine kinase ; V-yes-1 Yamaguchi sarcoma viral related oncogene homolog ; p53Lyn ; p56Lyn
<b>Observed Band</b>	59kD
<b>Calculated Molecular Weight</b>	59kD
<b>Cell Pathway</b>	Cell membrane. Nucleus. Cytoplasm. Cytoplasm, perinuclear region. Golgi apparatus. Membrane ; Lipid-anchor . Accumulates in the nucleus by inhibition of CRM1-mediated nuclear export. Nuclear accumulation is increased by inhibition of its kinase activity. The trafficking from the Golgi apparatus to the plasma membrane occurs in a kinase domain-dependent but kinase activity independent manner and is mediated by exocytic vesicular transport. Detected on plasma membrane lipid rafts.
<b>Tissue Specificity</b>	Detected in monocytes (at protein level). Detected in placenta, and in fetal brain, lung, liver and kidney. Widely expressed in a variety of organs, tissues, and cell types such as epidermoid, hematopoietic, and neuronal cells. Expressed in primary neuroblastoma tumors.
<b>Function</b>	Catalytic activity:ATP + a [protein]-L-tyrosine = ADP + a [protein]-L-tyrosine phosphate.,similarity:Belongs to the protein kinase superfamily. Tyr protein kinase family.,similarity:Belongs to the protein kinase superfamily. Tyr protein kinase family. SRC subfamily.,similarity:Contains 1 protein kinase

## 杭州臻优品生物科技有限公司

### 热销产品:

蛋白、一抗、抗体对、ELISA试剂盒、生化试剂盒  
CCK8试剂盒、QPCR检测试剂盒

### 检测服务:

ELISA检测及定制服务 | 生化检测 | PCR、QPCR检测 | WB检测  
ICO-IP检测 | 切片 | 染色 | 免疫组化 | 免疫荧光 | 透射电镜全套  
| 宏基因组、转录组、基因组、蛋白组、代谢组测序



关注官网



关注客服



domain.,similarity:Contains 1 SH2 domain.,similarity:Contains 1 SH3 domain.,subunit:Interacts with phosphorylated LIME1 and with CD79A upon BCR activation. Interacts with Epstein-Barr virus LMP2A. Interacts with TGFB111. Interaction, via the SH2 and SH3, domains with MUC1 is stimulated by IL7 and, the subsequent phosphorylation increases the binding between MUC1 and CTNNB1/beta-catenin. Interacts with PPP1R15A via the SH3 domain.,tissue specificity:Expressed in primary neuroblastoma tumors.,

#### Background

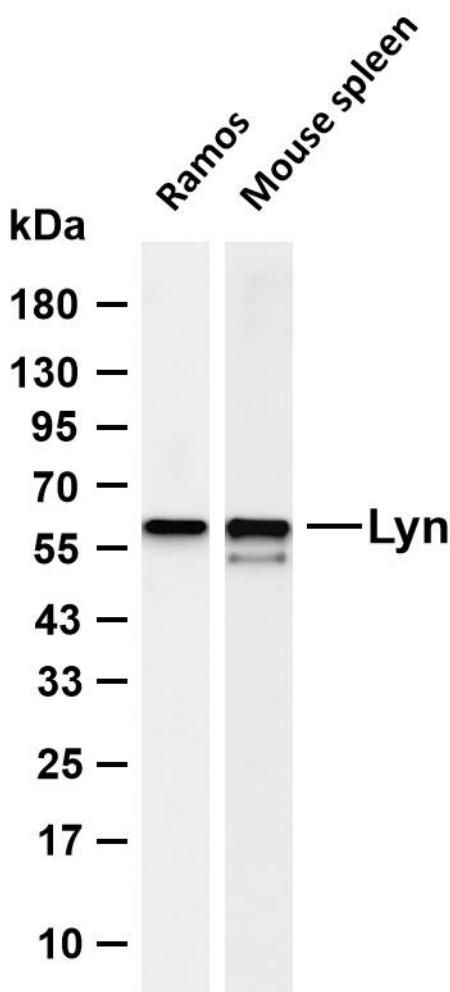
This gene encodes a tyrosine protein kinase, which maybe involved in the regulation of mast cell degranulation, and erythroid differentiation. Alternatively spliced transcript variants encoding different isoforms have been found for this gene. [provided by RefSeq, Jul 2011],

#### matters needing attention

Avoid repeated freezing and thawing!

#### Usage suggestions

This product can be used in immunological reaction related experiments. For more information, please consult technical personnel.



Various whole cell lysates were separated by 4-20% SDS-PAGE, and the membrane was blotted with anti-Lyn antibody. The HRP-conjugated Goat anti-Rabbit IgG (H + L) antibody was used to detect the antibody. Lane 1: Ramos Lane 2: Mouse spleen Predicted band size: 59kDa Observed band size: 59kDa

