



# TROP-2 Rabbit mAb

<b>Catalog No</b>	YP-rAb-17139
<b>Isotype</b>	IgG
<b>Reactivity</b>	Human,Mouse,Rat
<b>Applications</b>	WB,IHC,IF,ELISA
<b>Gene Name</b>	TACSTD2
<b>Protein Name</b>	Tumor-associated calcium signal transducer 2
<b>Purification Process</b>	Protein A
<b>Specificity</b>	Endogenous
<b>Formulation</b>	PBS, 50% glycerol, 0.05% Proclin 300, 0.05%BSA
<b>Source</b>	Monoclonal, Rabbit,IgG
<b>Dilution</b>	IHC 1:200-1:1000; WB 1:10000-1:50000; IF 1:200-1:1000; ELISA 1:5000-1:20000; Note: For IHC, we suggest antigen retrieval with TE buffer pH 9.0
<b>Concentration</b>	0.5 mg/ml
<b>Purity</b>	≥90%
<b>Storage Stability</b>	-15° C to -25° C/1 year(Do not lower than -25° C)
<b>Synonyms</b>	TACSTD2 ; GA733-1 ; M1S1 ; TROP2 ; Tumor-associated calcium signal transducer 2 ; Cell surface glycoprotein Trop-2 ; Membrane component chromosome 1 surface marker 1 ; Pancreatic carcinoma marker protein GA733-1
<b>Observed Band</b>	45-65kD
<b>Calculated Molecular Weight</b>	36kD
<b>Cell Pathway</b>	Membrane; Single-pass type I membrane protein.
<b>Tissue Specificity</b>	Placenta, pancreatic carcinoma cell lines.
<b>Function</b>	Disease:Defects in TACSTD2 are the cause of gelatinous drop-like corneal dystrophy (GDL) [MIM:204870]; also known as lattice corneal dystrophy type III. GDL is an autosomal recessive disorder characterized by grayish corneal amyloid deposits that cause severe visual impairment.,Function:GA733 tumor-associated antigen gene family may function as growth factor receptors.,PTM:The N-terminus is blocked.,similarity:Contains 1 thyroglobulin type-1 domain.,tissue specificity:Placenta, pancreatic carcinoma cell lines.,
<b>Background</b>	This intronless gene encodes a carcinoma-associated antigen. This antigen is a cell surface receptor that transduces calcium signals. Mutations of this gene have





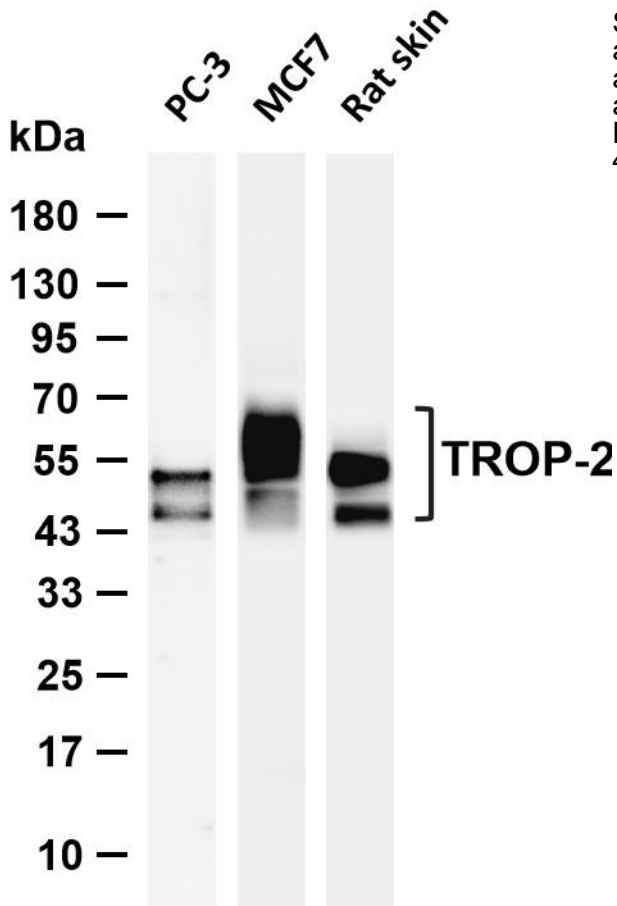
been associated with gelatinous drop-like corneal dystrophy.[provided by RefSeq, Dec 2009],

**matters needing attention**

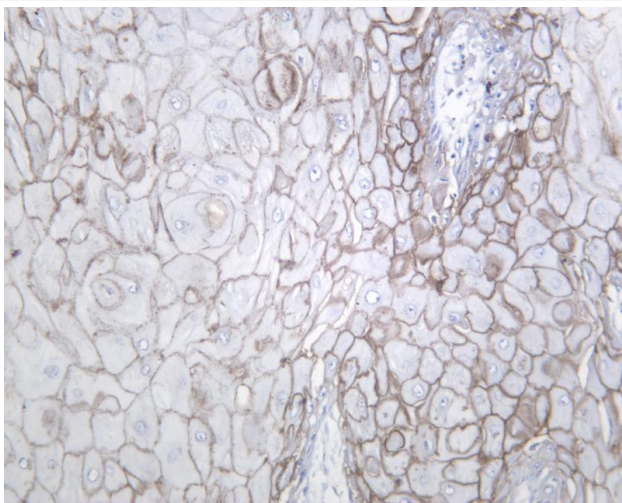
Avoid repeated freezing and thawing!

**Usage suggestions**

This product can be used in immunological reaction related experiments. For more information, please consult technical personnel.



Various whole cell lysates were separated by 4-20% SDS-PAGE, and the membrane was blotted with anti-TROP-2 antibody. The HRP-conjugated Goat anti-Rabbit IgG (H + L) antibody was used to detect the antibody. Lane 1: PC-3 Lane 2: MCF7 Lane 3: Rat skin Predicted band size: 36kDa Observed band size: 45-65kDa



Human skin squamous cell carcinoma was stained with anti-TROP-2 Rabbit antibody

杭州臻优品生物科技有限公司

热销产品:

蛋白、一抗、抗体对、ELISA试剂盒、生化试剂盒  
CCK8试剂盒、QPCR检测试剂盒

检测服务:

ELISA检测及定制服务 | 生化检测 | PCR、QPCR检测 | WB检测  
ICO-IP检测 | 切片 | 染色 | 免疫组化 | 免疫荧光 | 透射电镜全套  
| 宏基因组、转录组、基因组、蛋白组、代谢组测序



关注官网



关注客服