



DRD1 Rabbit mAb

Catalog No	YP-rAb-17138
Isotype	IgG
Reactivity	Human,Mouse,Rat
Applications	WB,IHC,IF,ELISA
Gene Name	DRD1
Protein Name	D(1A) dopamine receptor
Purification Process	Protein A
Specificity	Endogenous
Formulation	PBS, 50% glycerol, 0.05% Proclin 300, 0.05%BSA
Source	Monoclonal, Rabbit,IgG
Dilution	IHC 1:400-1:1000; WB 1:500-1:2000; IF 1:200-1:1000; ELISA 1:5000-1:20000; Note: For IHC, we suggest antigen retrieval with TE buffer pH 9.0
Concentration	0.5 mg/ml
Purity	≥90%
Storage Stability	-15° C to -25° C/1 year(Do not lower than -25° C)
Synonyms	DRD1 ; D ; 1A ; dopamine receptor ; Dopamine D1 receptor
Observed Band	75kD
Calculated Molecular Weight	49kD
Cell Pathway	Cell membrane ; Multi-pass membrane protein . Endoplasmic reticulum membrane ; Multi-pass membrane protein . Cell projection, dendrite . Cell projection, dendritic spine . Transport from the endoplasmic reticulum to the cell surface is regulated by interaction with DNAJC14. .
Tissue Specificity	Detected in caudate, nucleus accumbens and in the olfactory tubercle.
Function	This is one of the five types (D1 to D5) of receptors for dopamine. The activity of this receptor is mediated by G proteins which activate adenylyl cyclase.,similarity:Belongs to the G-protein coupled receptor 1 family.,subcellular location:Transport from the endoplasmic reticulum to the cell surface is regulated by interaction with DNAJC14.,subunit:Interacts with DNAJC14 via its C-terminus (By similarity). Interacts with DRD1IP.,tissue specificity:Detected in caudate, nucleus accumbens and in the olfactory tubercle.,
Background	This gene encodes the D1 subtype of the dopamine receptor. The D1 subtype is the most abundant dopamine receptor in the central nervous system. This G-protein coupled receptor stimulates adenylyl cyclase and activates cyclic





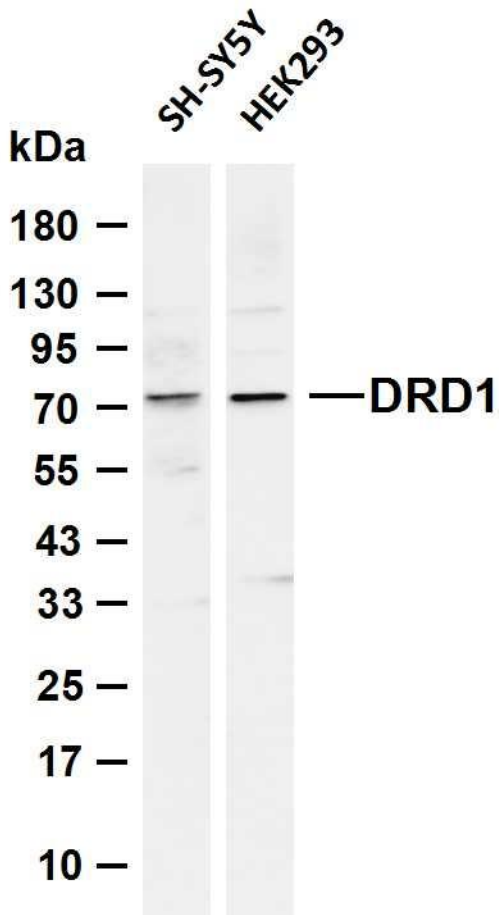
AMP-dependent protein kinases. D1 receptors regulate neuronal growth and development, mediate some behavioral responses, and modulate dopamine receptor D2-mediated events. Alternate transcription initiation sites result in two transcript variants of this gene. [provided by RefSeq, Jul 2008],

matters needing attention

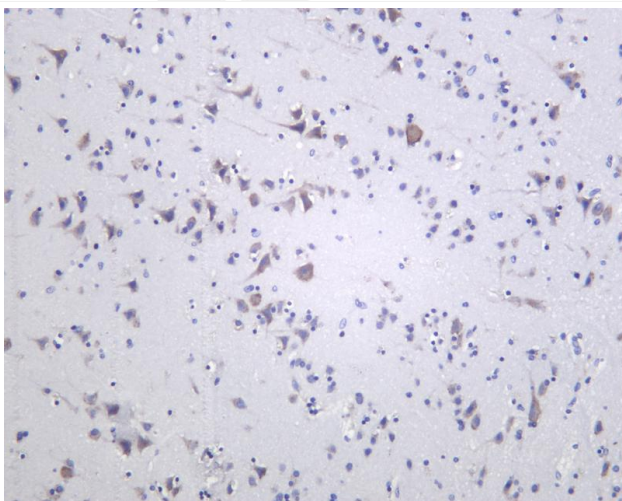
Avoid repeated freezing and thawing!

Usage suggestions

This product can be used in immunological reaction related experiments. For more information, please consult technical personnel.



Various whole cell lysates were separated by 4-20% SDS-PAGE, and the membrane was blotted with anti-DRD1 antibody. The HRP-conjugated Goat anti-Rabbit IgG (H + L) antibody was used to detect the antibody. Lane 1: SH-SY5Y Lane 2: HEK293
Predicted band size: 49kDa Observed band size: 75kDa



Human brain was stained with anti-DRD1 Rabbit antibody

杭州臻优品生物科技有限公司

热销产品:

蛋白、一抗、抗体对、ELISA试剂盒、生化试剂盒
CCK8试剂盒、QPCR检测试剂盒

检测服务:

ELISA检测及定制服务 | 生化检测 | PCR、QPCR检测 | WB检测
ICO-IP检测 | 切片 | 染色 | 免疫组化 | 免疫荧光 | 透射电镜全套
| 宏基因组、转录组、基因组、蛋白组、代谢组测序



关注官网



关注客服