



# CD28 Rabbit mAb

<b>Catalog No</b>	YP-rAb-17124
<b>Isotype</b>	IgG
<b>Reactivity</b>	Human,Mouse,Rat
<b>Applications</b>	WB,IHC,IF,IP,ELISA
<b>Gene Name</b>	CD28
<b>Protein Name</b>	T-cell-specific surface glycoprotein CD28
<b>Purification Process</b>	Protein A
<b>Specificity</b>	Endogenous
<b>Formulation</b>	PBS, 50% glycerol, 0.05% Proclin 300, 0.05%BSA
<b>Source</b>	Monoclonal, Rabbit,IgG
<b>Dilution</b>	IHC 1:200-1:1000; WB 1:2000-1:10000; IF 1:200-1:1000; ELISA 1:5000-1:20000; IP 1:50-1:200; Note: For IHC, we suggest antigen retrieval with TE buffer pH 9.0
<b>Concentration</b>	0.5 mg/ml
<b>Purity</b>	≥90%
<b>Storage Stability</b>	-15° C to -25° C/1 year(Do not lower than -25° C)
<b>Synonyms</b>	CD28 ; T-cell-specific surface glycoprotein CD28 ; TP44 ; CD28
<b>Observed Band</b>	50kD
<b>Calculated Molecular Weight</b>	25kD
<b>Cell Pathway</b>	Membrane; Single-pass type I membrane protein.; [Isoform 3]: Cell surface .
<b>Tissue Specificity</b>	Expressed in T-cells and plasma cells, but not in less mature B-cells.
<b>Function</b>	Involved in T-cell activation, the induction of cell proliferation and cytokine production and promotion of T-cell survival.,online information:CD28 entry,similarity:Contains 1 Ig-like V-type (immunoglobulin-like) domain.,subunit:Homodimer; disulfide-linked. Interacts with DUSP14. Binds to CD80/B7-1 and CD86/B7-2/B70.,tissue specificity:Expressed in T-cells and plasma cells, but not in less mature B-cells.,
<b>Background</b>	The protein encoded by this gene is essential for T-cell proliferation and survival, cytokine production, and T-helper type-2 development. Several alternatively spliced transcript variants encoding different isoforms have been found for this gene.[provided by RefSeq, Jul 2011],



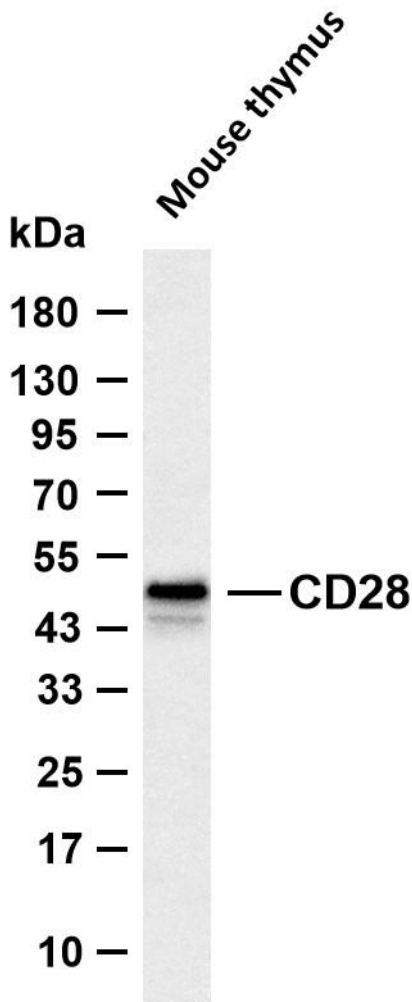


matters needing attention

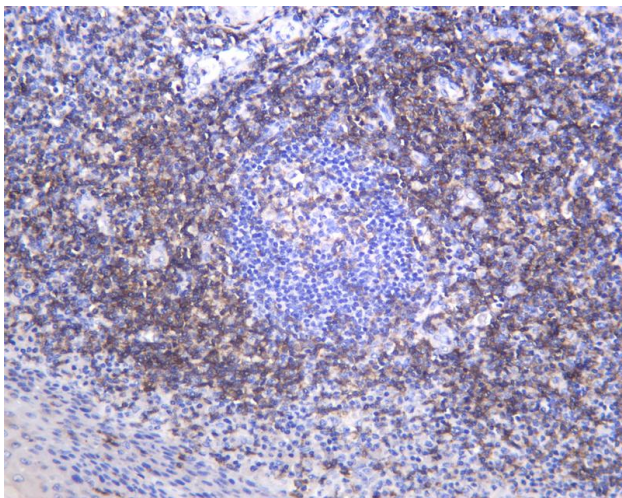
Avoid repeated freezing and thawing!

Usage suggestions

This product can be used in immunological reaction related experiments. For more information, please consult technical personnel.



Various whole cell lysates were separated by 4-20% SDS-PAGE, and the membrane was blotted with anti-CD28 antibody. The HRP-conjugated Goat anti-Rabbit IgG (H + L) antibody was used to detect the antibody. Lane 1: Mouse thymus Predicted band size: 25kDa Observed band size: 50kDa



Human tonsil was stained with anti-CD28 Rabbit antibody

杭州臻优品生物科技有限公司

热销产品:

蛋白、一抗、抗体对、ELISA试剂盒、生化试剂盒  
CCK8试剂盒、QPCR检测试剂盒

检测服务:

ELISA检测及定制服务 | 生化检测 | PCR、QPCR检测 | WB检测  
ICO-IP检测 | 切片 | 染色 | 免疫组化 | 免疫荧光 | 透射电镜全套  
| 宏基因组、转录组、基因组、蛋白组、代谢组测序



关注官网



关注客服



## 杭州臻优品生物科技有限公司

### 热销产品:

蛋白、一抗、抗体对、ELISA试剂盒、生化试剂盒  
CCK8试剂盒、QPCR检测试剂盒

### 检测服务:

ELISA检测及定制服务 | 生化检测 | PCR、QPCR检测 | WB检测  
ICO-IP检测 | 切片 | 染色 | 免疫组化 | 免疫荧光 | 透射电镜全套  
| 宏基因组、转录组、基因组、蛋白组、代谢组测序



关注官网



关注客服