



# Ref-1 Rabbit mAb

|                                    |   |
|------------------------------------|---|
| <b>Catalog No</b>                  | YP-rAb-17122  |
| <b>Isotype</b>                     | IgG   |
| <b>Reactivity</b>                  | Human,Mouse,Rat   |
| <b>Applications</b>                | WB,IHC,IF,ELISA   |
| <b>Gene Name</b>                   | APEX1   |
| <b>Protein Name</b>                | DNA-(apurinic or apyrimidinic site) lyase   |
| <b>Purification Process</b>        | Protein A   |
| <b>Specificity</b>                 | Endogenous  |
| <b>Formulation</b>                 | PBS, 50% glycerol, 0.05% Proclin 300, 0.05%BSA  |
| <b>Source</b>                      | Monoclonal, Rabbit,IgG  |
| <b>Dilution</b>                    | IHC 1:1000-1:4000; WB 1:2000-1:10000; IF 1:200-1:1000; ELISA 1:5000-1:20000; Note: For IHC, we suggest antigen retrieval with TE buffer pH 9.0  |
| <b>Concentration</b>               | 0.5 mg/ml   |
| <b>Purity</b>                      | ≥90%  |
| <b>Storage Stability</b>           | -15° C to -25° C/1 year(Do not lower than -25° C)   |
| <b>Synonyms</b>                    | APEX1 ; APE ; APE1 ; APEX ; APX ; HAP1 ; REF1 ; DNA- ; apurinic or apyrimidinic site ; lyase ; APEX nuclease ; APEN ; Apurinic-apyrimidinic endonuclease 1 ; AP endonuclease 1 ; APE-1 ; REF-1 ; Redox factor-1   |
| <b>Observed Band</b>               | 36kD  |
| <b>Calculated Molecular Weight</b> | 36kD  |
| <b>Cell Pathway</b>                | Nucleus. Nucleus, nucleolus. Nucleus speckle. Endoplasmic reticulum. Cytoplasm. Detected in the cytoplasm of B-cells stimulated to switch (By similarity). Colocalized with SIRT1 in the nucleus. Colocalized with YBX1 in nuclear speckles after genotoxic stress. Together with OGG1 is recruited to nuclear speckles in UVA-irradiated cells. Colocalized with nucleolin and NPM1 in the nucleolus. Its nucleolar localization is cell cycle dependent and requires active rRNA transcription. Colocalized with calreticulin in the endoplasmic reticulum. Translocation from the nucleus to the cytoplasm is stimulated in presence of nitric oxide (NO) and function in a CRM1-dependent manner, possibly as a consequence of demasking a nuclear export signal (amino acid position 64-80). S-nitrosylation at Cys-93 and Cys-310 regulates its nuclear-cytosolic shuttling. Ubiquitinated form is localized predominantly in the cytoplasm. . ; [DNA-(apurinic or apyrimidinic site) endonuclease, mitochondrial]: Mitochondrion. The cleaved APEX2 is only detected in mitochondria (By similarity). Translocation from the cytoplasm to the mitochondria is mediated by ROS signaling and cleavage |

## 杭州臻优品生物科技有限公司

### 热销产品:

蛋白、一抗、抗体对、ELISA试剂盒、生化试剂盒  
CCK8试剂盒、QPCR检测试剂盒

### 检测服务:

ELISA检测及定制服务 | 生化检测 | PCR、QPCR检测 | WB检测  
ICO-IP检测 | 切片 | 染色 | 免疫组化 | 免疫荧光 | 透射电镜全套  
| 宏基因组、转录组、基因组、蛋白组、代谢组测序



关注官网

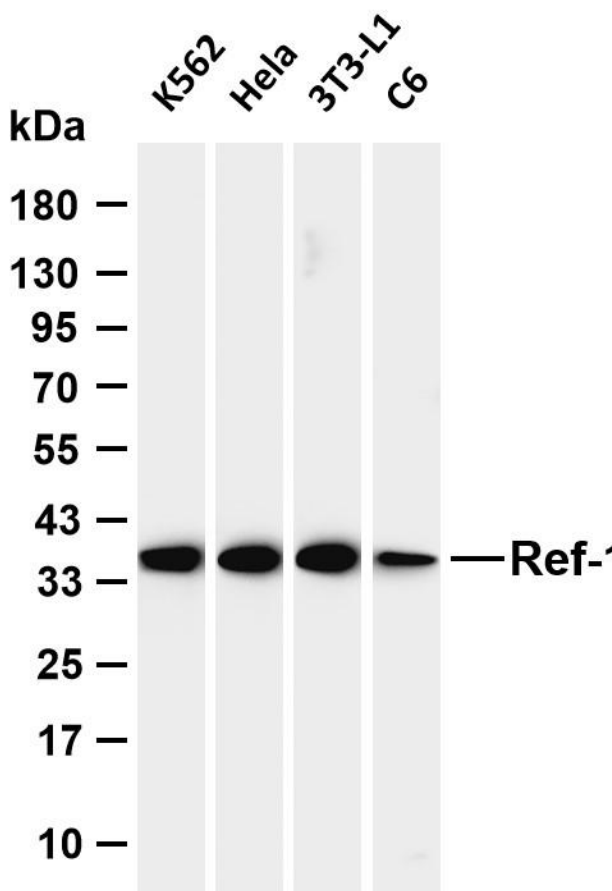


关注客服



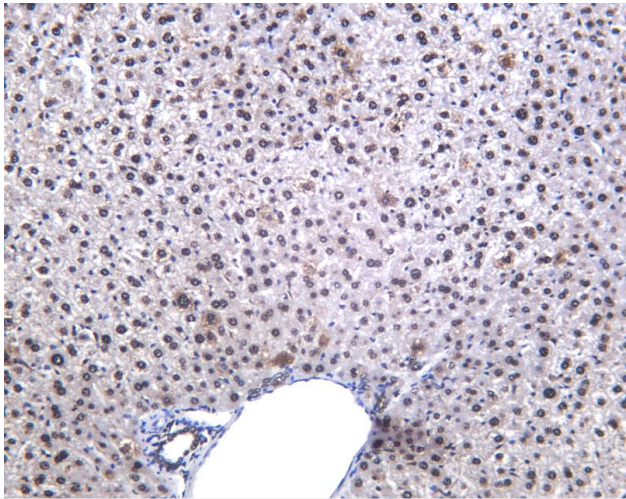
mediated by granzyme A. Tom20-dependent translocated mitochondrial APEX1 level is significantly increased after genotoxic stress. .

|                                  |   |
|----------------------------------|---|
| <b>Tissue Specificity</b>        | Brain,Embryonic stem cells,Lung,Melanocyte,Placenta,Skin,   |
| <b>Function</b>                  | Catalytic activity:The C-O-P bond 3' to the apurinic or apyrimidinic site in DNA is broken by a beta-elimination reaction, leaving a 3'-terminal unsaturated sugar and a product with a terminal 5'-phosphate.,Function:Repairs oxidative DNA damages in vitro. May have a role in protection against cell lethality and suppression of mutations. Removes the blocking groups from the 3'-termini of the DNA strand breaks generated by ionizing radiations and bleomycin.,similarity:Belongs to the DNA repair enzymes AP/exoA family.,subunit:Monomer. Component of the SET complex, which also contains SET, ANP32A, HMGB2 and NME1., |
| <b>Background</b>                | Apurinic/apyrimidinic (AP) sites occur frequently in DNA molecules by spontaneous hydrolysis, by DNA damaging agents or by DNA glycosylases that remove specific abnormal bases. AP sites are pre-mutagenic lesions that can prevent normal DNA replication so the cell contains systems to identify and repair such sites. Class II AP endonucleases cleave the phosphodiester backbone 5' to the AP site. This gene encodes the major AP endonuclease in human cells. Splice variants have been found for this gene; all encode the same protein. [provided by RefSeq, Jul 2008],   |
| <b>matters needing attention</b> | Avoid repeated freezing and thawing!  |
| <b>Usage suggestions</b>         | This product can be used in immunological reaction related experiments. For more information, please consult technical personnel.   |



Various whole cell lysates were separated by 4-20% SDS-PAGE, and the membrane was blotted with anti-Ref-1 antibody. The HRP-conjugated Goat anti-Rabbit IgG (H + L) antibody was used to detect the antibody. Lane 1: K562 Lane 2: HeLa Lane 1: 3T3-L1 Lane 2: C6 Predicted band size: 36kDa Observed band size: 36kDa





Mouse liver was stained with anti-Ref-1 Rabbit antibody

## 杭州臻优品生物科技有限公司

### 热销产品:

蛋白、一抗、抗体对、ELISA试剂盒、生化试剂盒  
CCK8试剂盒、QPCR检测试剂盒

### 检测服务:

ELISA检测及定制服务 | 生化检测 | PCR、QPCR检测 | WB检测  
ICO-IP检测 | 切片 | 染色 | 免疫组化 | 免疫荧光 | 透射电镜全套  
| 宏基因组、转录组、基因组、蛋白组、代谢组测序



关注官网



关注客服