



Catenin- α 1 Rabbit mAb

Catalog No	YP-rAb-17121
Isotype	IgG
Reactivity	Human,Mouse,Rat
Applications	WB,IHC,IF,IP,ELISA
Gene Name	CTNNA1
Protein Name	Catenin alpha-1
Purification Process	Protein A
Specificity	Endogenous
Formulation	PBS, 50% glycerol, 0.05% Proclin 300, 0.05%BSA
Source	Monoclonal, Rabbit,IgG
Dilution	IHC 1:200-1:1000; WB 1:2000-1:10000; IF 1:200-1:1000; ELISA 1:5000-1:20000; IP 1:50-1:200; Note: For IHC, we suggest antigen retrieval with TE buffer pH 9.0
Concentration	0.5 mg/ml
Purity	≥90%
Storage Stability	-15° C to -25° C/1 year(Do not lower than -25° C)
Synonyms	CTNNA1 ; Catenin alpha-1 ; Alpha E-catenin ; Cadherin-associated protein ; Renal carcinoma antigen NY-REN-13
Observed Band	100kD
Calculated Molecular Weight	100kD
Cell Pathway	[Isoform 1]: Cytoplasm, cytoskeleton. Cell junction, adherens junction. Cell membrane; Peripheral membrane protein; Cytoplasmic side. Cell junction. Found at cell-cell boundaries and probably at cell-matrix boundaries.; [Isoform 3]: Cell membrane ; Peripheral membrane protein ; Cytoplasmic side .
Tissue Specificity	Expressed ubiquitously in normal tissues.
Function	Disease:Abnormalities of alpha-catenin are involved in the process of cancer invasion and metastasis.,Function:Associates with the cytoplasmic domain of a variety of cadherins. The association of catenins to cadherins produces a complex which is linked to the actin filament network, and which seems to be of primary importance for cadherins cell-adhesion properties. May play a crucial role in cell differentiation.,PTM:Sumoylated.,similarity:Belongs to the vinculin/alpha-catenin family.,subcellular location:Found at cell-cell boundaries and probably at cell-matrix boundaries.,subunit:Binds MLLT4 and F-actin (By similarity). Interacts directly with PSEN1 and CTNNB1 to form part of the PSEN1/cadherin/catenin adhesion complex. Interacts with ARHGAP21 and with JUB.,tissue

杭州臻优品生物科技有限公司

热销产品:

蛋白、一抗、抗体对、ELISA试剂盒、生化试剂盒
CCK8试剂盒、QPCR检测试剂盒

检测服务:

ELISA检测及定制服务 | 生化检测 | PCR、QPCR检测 | WB检测
ICO-IP检测 | 切片 | 染色 | 免疫组化 | 免疫荧光 | 透射电镜全套
| 宏基因组、转录组、基因组、蛋白组、代谢组测序



关注官网



关注客服



specificity: Expressed ubiquitously in normal tissues.,

Background

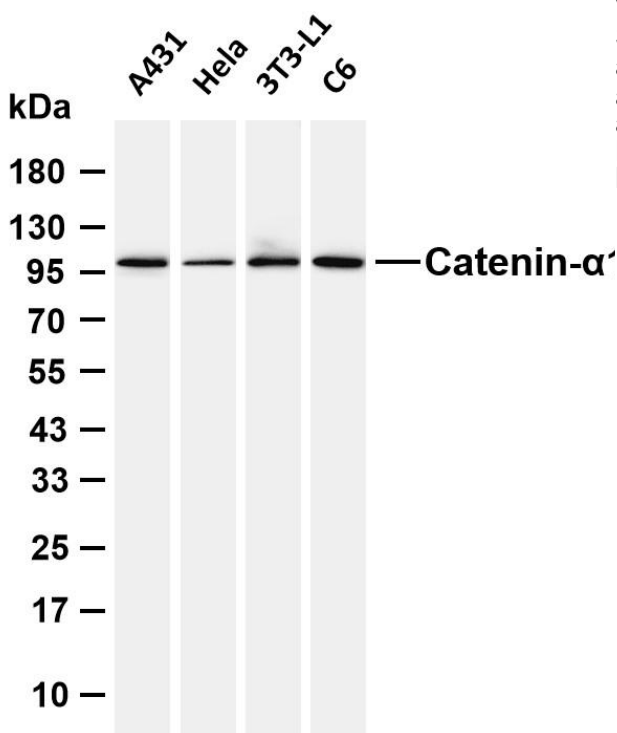
catenin alpha 1 (CTNNA1) Homo sapiens This gene encodes a member of the catenin family of proteins that play an important role in cell adhesion process by connecting cadherins located on the plasma membrane to the actin filaments inside the cell. The encoded mechanosensing protein contains three vinculin homology domains and undergoes conformational changes in response to cytoskeletal tension, resulting in the reconfiguration of cadherin-actin filament connections. Certain mutations in this gene cause butterfly-shaped pigment dystrophy. [provided by RefSeq, May 2016],

matters needing attention

Avoid repeated freezing and thawing!

Usage suggestions

This product can be used in immunological reaction related experiments. For more information, please consult technical personnel.



Various whole cell lysates were separated by 4-20% SDS-PAGE, and the membrane was blotted with anti-Catenin- α 1 antibody. The HRP-conjugated Goat anti-Rabbit IgG (H + L) antibody was used to detect the antibody. Lane 1: A431 Lane 2: HeLa Lane 3: 3T3-L1 Lane 4: C6 Predicted band size: 100kDa Observed band size: 100kDa

