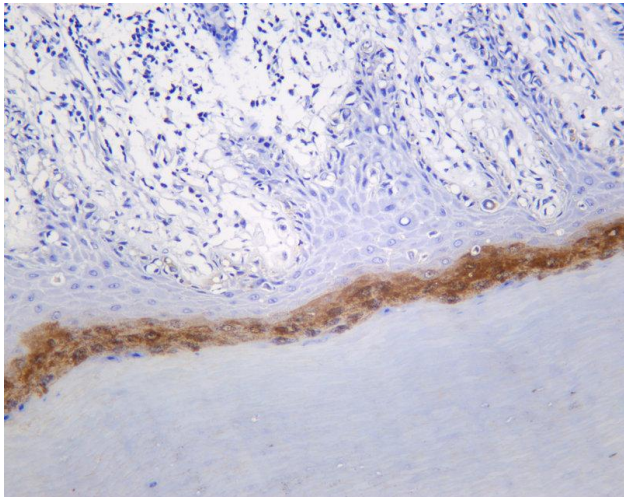




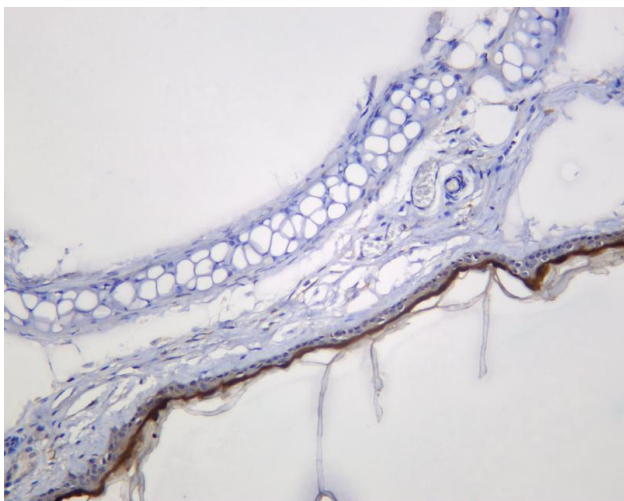
Loricrin Rabbit mAb

Catalog No	YP-rAb-17119
Isotype	IgG
Reactivity	Human,Mouse,Rat
Applications	IHC,IF,ELISA
Gene Name	LOR LRN
Protein Name	Loricrin
Purification Process	Protein A
Specificity	Endogenous
Formulation	PBS, 50% glycerol, 0.05% Proclin 300, 0.05%BSA
Source	Monoclonal, Rabbit,IgG
Dilution	IHC 1:200-1:1000; IF 1:200-1:1000; ELISA 1:5000-1:20000; Note: For IHC, we suggest antigen retrieval with TE buffer pH 9.0
Concentration	0.5 mg/ml
Purity	≥90%
Storage Stability	-15° C to -25° C/1 year(Do not lower than -25° C)
Synonyms	
Observed Band	
Calculated Molecular Weight	
Cell Pathway	Cytoplasm. Nucleus, nucleoplasm.
Tissue Specificity	[Isoform Short]:Expressed at low levels in bone marrow-derived mesenchymal stem cells. Expressed in cord blood immature promyelocytes and in peripheral blood myeloid and lymphoid cell populations.
Function	Major keratinocyte cell envelope protein.
Background	The product of this gene transfers fucose to N-acetylglucosamine polysaccharides to generate fucosylated carbohydrate structures. It catalyzes the synthesis of the non-sialylated antigen, Lewis x (CD15). [provided by RefSeq, Jan 2009],
matters needing attention	Avoid repeated freezing and thawing!
Usage suggestions	This product can be used in immunological reaction related experiments. For more information, please consult technical personnel.

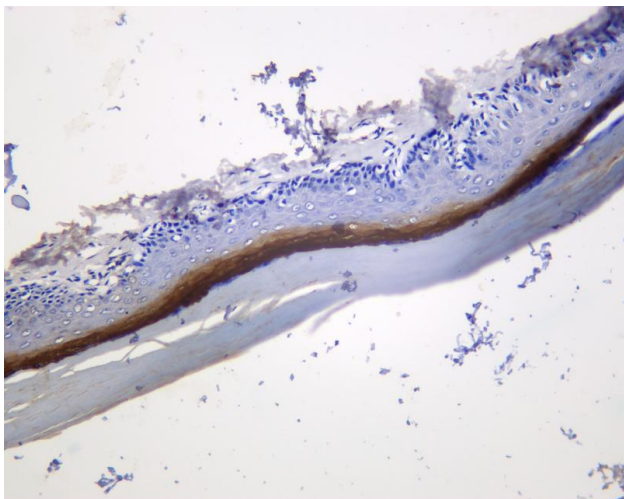




Human skin was stained with anti-Loricrin Rabbit antibody



Mouse skin was stained with anti-Loricrin Rabbit antibody



Rat skin was stained with anti-Loricrin Rabbit antibody

