



# CD15 Rabbit mAb

<b>Catalog No</b>	YP-rAb-17117
<b>Isotype</b>	IgG
<b>Reactivity</b>	Human
<b>Applications</b>	IHC,IF,ELISA
<b>Gene Name</b>	FUT4
<b>Protein Name</b>	Alpha-(1,3)-fucosyltransferase
<b>Purification Process</b>	Protein A
<b>Specificity</b>	Endogenous
<b>Formulation</b>	PBS, 50% glycerol, 0.05% Proclin 300, 0.05%BSA
<b>Source</b>	Monoclonal, Rabbit,IgG
<b>Dilution</b>	IHC 1:200-1:1000; IF 1:200-1:1000; ELISA 1:5000-1:20000; Note: For IHC, we suggest antigen retrieval with TE buffer pH 9.0
<b>Concentration</b>	0.5 mg/ml
<b>Purity</b>	≥90%
<b>Storage Stability</b>	-15° C to -25° C/1 year(Do not lower than -25° C)
<b>Synonyms</b>	FUT4 ; ELFT ; FCT3A ; Alpha- ; 1 ; 3 ; -fucosyltransferase ; ELAM-1 ligand fucosyltransferase ; Fucosyltransferase 4 ; Fucosyltransferase IV ; Fuc-TIV ; FucT-IV ; Galactoside 3-L-fucosyltransferase
<b>Observed Band</b>	
<b>Calculated Molecular Weight</b>	
<b>Cell Pathway</b>	Golgi apparatus, Golgi stack membrane; Single-pass type II membrane protein. Membrane-bound form in trans cisternae of Golgi.
<b>Tissue Specificity</b>	[Isoform Short]: Expressed at low levels in bone marrow-derived mesenchymal stem cells. ; Expressed in cord blood immature promyelocytes and in peripheral blood myeloid and lymphoid cell populations.
<b>Function</b>	Caution:It is uncertain whether Met-1 or Met-126 is the initiator.,Function:May catalyze alpha-1,3 glycosidic linkages involved in the expression of Lewis X/SSEA-1 and VIM-2 antigens.,online information:Fucosyltransferase 4,online information:GlycoGene database,pathway:Protein modification; protein glycosylation.,similarity:Belongs to the glycosyltransferase 10 family.,subcellular location:Membrane-bound form in trans cisternae of Golgi.,
<b>Background</b>	The product of this gene transfers fucose to N-acetyllactosamine polysaccharides to generate fucosylated carbohydrate structures. It catalyzes the synthesis of the non-sialylated antigen, Lewis x (CD15). [provided by RefSeq, Jan 2009],

杭州臻优品生物科技有限公司

热销产品:

蛋白、一抗、抗体对、ELISA试剂盒、生化试剂盒  
CCK8试剂盒、QPCR检测试剂盒

检测服务:

ELISA检测及定制服务 | 生化检测 | PCR、QPCR检测 | WB检测  
ICO-IP检测 | 切片 | 染色 | 免疫组化 | 免疫荧光 | 透射电镜全套  
| 宏基因组、转录组、基因组、蛋白组、代谢组测序



关注官网



关注客服

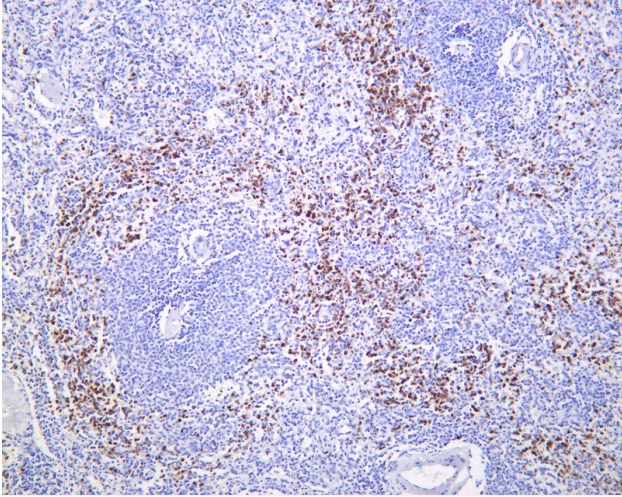


**matters needing attention**

Avoid repeated freezing and thawing!

**Usage suggestions**

This product can be used in immunological reaction related experiments. For more information, please consult technical personnel.



Human spleen was stained with anti-CD15 Rabbit antibody

