



SFRP1 Rabbit mAb

Catalog No	YP-rAb-17115
Isotype	IgG
Reactivity	Human,Mouse,Rat
Applications	WB,IHC,IF,ELISA
Gene Name	SFRP1 FRP FRP1 SARP2
Protein Name	Secreted frizzled-related protein 1 (FRP-1) (sFRP-1) (Secreted apoptosis-related protein 2) (SARP-2)
Purification Process	Protein A
Specificity	Endogenous
Formulation	PBS, 50% glycerol, 0.05% Proclin 300, 0.05%BSA
Source	Monoclonal, Rabbit,IgG
Dilution	IHC 1:200-1:1000; WB 1:2000-1:10000; IF 1:200-1:1000; ELISA 1:5000-1:20000; Note: For IHC, we suggest antigen retrieval with TE buffer pH 9.0
Concentration	0.5 mg/ml
Purity	≥90%
Storage Stability	-15° C to -25° C/1 year(Do not lower than -25° C)
Synonyms	
Observed Band	38kD
Calculated Molecular Weight	35kD
Cell Pathway	Secreted. Cell membrane or extracellular matrix-associated. Released by heparin-binding.
Tissue Specificity	Widely expressed. Absent from lung, liver and peripheral blood leukocytes. Highest levels in heart and fetal kidney. Also expressed in testis, ovary, fetal brain and lung, leiomyomal cells, myometrial cells and vascular smooth muscle cells. Expressed in foreskin fibroblasts and in keratinocytes.
Function	Domain:The FZ domain is involved in binding with Wnt ligands.,Function:Soluble frizzled-related proteins (sFRPS) function as modulators of Wnt signaling through direct interaction with Wnts. They have a role in regulating cell growth and differentiation in specific cell types. SFRP1 decreases intracellular beta-catenin levels (By similarity). Has antiproliferative effects on vascular cells, in vitro and in vivo, and can induce, in vivo, an angiogenic response. In vascular cell cycle, delays the G1 phase and entry into the S phase (By similarity). In kidney development, inhibits tubule formation and bud growth in metanephroi (By similarity). Inhibits WNT1/WNT4-mediated TCF-dependent transcription.,induction:Down-regulated in colorectal and breast tumors.





Up-regulated in uterine leiomyomas under high estrogenic conditions. Expression, in leiomyomal cells, also increased both under hypoxic and serum deprivation conditions. mass spectrometry: Isoform N-glycosylated on Asn-173
PubMed:11741940, miscellaneous: May have therapeutic use in cardiac surgery. similarity: Belongs to the secreted frizzled-related protein (sFRP) family. similarity: Contains 1 FZ (frizzled) domain. similarity: Contains 1 NTR domain. subcellular location: Cell membrane or extracellular matrix-associated. Released by heparin-binding. subunit: Interacts with WNT1, WNT2 and FRZD6. Interacts with WNT4 and WNT8. tissue specificity: Widely expressed. Absent from lung, liver and peripheral blood leukocytes. Highest levels in heart and fetal kidney. Also expressed in testis, ovary, fetal brain and lung, leiomyomal cells, myometrial cells and vascular smooth muscle cells. Expressed in foreskin fibroblasts and in keratinocytes.

Background

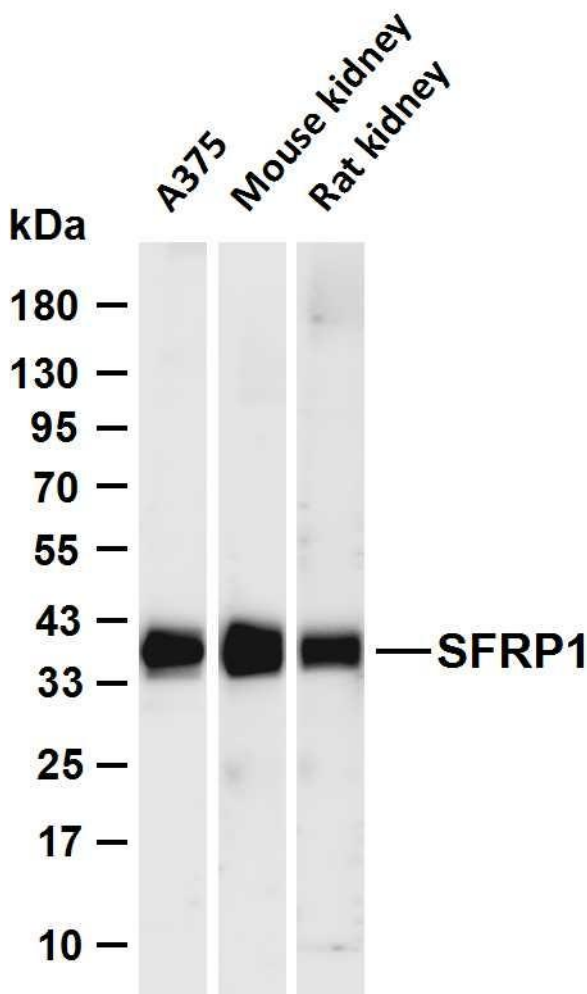
This gene encodes a member of the SFRP family that contains a cysteine-rich domain homologous to the putative Wnt-binding site of Frizzled proteins. Members of this family act as soluble modulators of Wnt signaling; epigenetic silencing of SFRP genes leads to deregulated activation of the Wnt-pathway which is associated with cancer. This gene may also be involved in determining the polarity of photoreceptor cells in the retina. [provided by RefSeq, Sep 2009],

matters needing attention

Avoid repeated freezing and thawing!

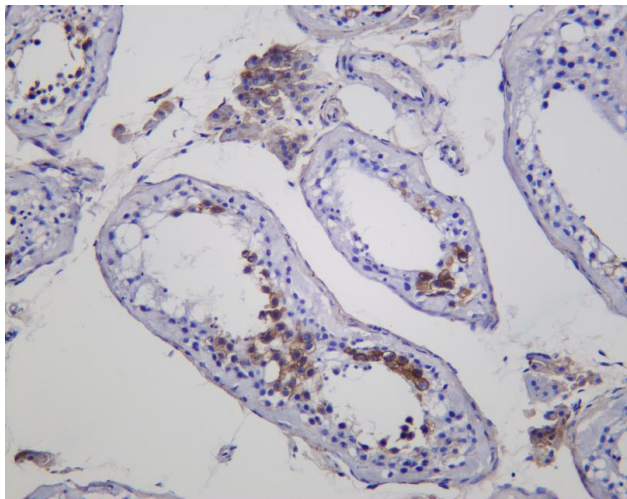
Usage suggestions

This product can be used in immunological reaction related experiments. For more information, please consult technical personnel.



Various whole cell lysates were separated by 4-20% SDS-PAGE, and the membrane was blotted with anti-SFRP1 antibody. The HRP-conjugated Goat anti-Rabbit IgG (H + L) antibody was used to detect the antibody. Lane 1: A375 Lane 2: Mouse kidney Lane 3: Rat kidney Predicted band size: 35kDa Observed band size: 38kDa





Human testis was stained with anti-SFRP1 Rabbit antibody

杭州臻优品生物科技有限公司

热销产品:

蛋白、一抗、抗体对、ELISA试剂盒、生化试剂盒
CCK8试剂盒、QPCR检测试剂盒

检测服务:

ELISA检测及定制服务 | 生化检测 | PCR、QPCR检测 | WB检测
ICO-IP检测 | 切片 | 染色 | 免疫组化 | 免疫荧光 | 透射电镜全套
| 宏基因组、转录组、基因组、蛋白组、代谢组测序



关注官网



关注客服