



DLL3 Rabbit mAb

Catalog No	YP-rAb-17114
Isotype	IgG
Reactivity	Human,Mouse
Applications	WB,IHC,IF,IP,ELISA
Gene Name	DLL3
Protein Name	Delta-like protein 3 (Drosophila Delta homolog 3) (Delta3)
Purification Process	Protein A
Specificity	Endogenous
Formulation	PBS, 50% glycerol, 0.05% Proclin 300, 0.05%BSA
Source	Monoclonal, Rabbit,IgG
Dilution	IHC 1:200-1:1000; WB 1:500-1:2000; IF 1:200-1:1000; ELISA 1:5000-1:20000; IP 1:50-1:200; Note: For IHC, we suggest antigen retrieval with TE buffer pH 9.0
Concentration	0.5 mg/ml
Purity	≥90%
Storage Stability	-15° C to -25° C/1 year(Do not lower than -25° C)
Synonyms	
Observed Band	65kD
Calculated Molecular Weight	65kD
Cell Pathway	Membrane ; Single-pass type I membrane protein .
Tissue Specificity	Brain,
Function	Disease:Defects in DLL3 are the cause of spondylocostal dysostosis autosomal recessive type 1 (SCDO1) [MIM:277300]. Autosomal recessive spondylocostal dysostosis is a rare condition of variable severity associated with vertebral and rib segmentation defects. The main skeletal malformations include fusion of vertebrae, hemivertebrae, fusion of certain ribs, and other rib malformations. Deformity of the chest and spine (severe scoliosis, kyphoscoliosis and lordosis) is a natural consequence of the malformation and leads to a dwarf-like appearance. As the thorax is small, infants frequently have respiratory insufficiency and repeated respiratory infections resulting in life-threatening complications in the first year of life.,Domain:The DSL domain is required for binding to the Notch receptor.,Function:Inhibits primary neurogenesis. May be required to divert neurons along a specific differentiation pathway. Plays a role in the formation of somite boundaries during segmentation of the paraxial





mesoderm.,PTM:Ubiquitinated by MIB (MIB1 or MIB2), leading to its endocytosis and subsequent degradation.,similarity:Contains 1 DSL domain.,similarity:Contains 6 EGF-like domains.,subunit:Can bind and activate Notch-1 or another Notch receptor.,

Background

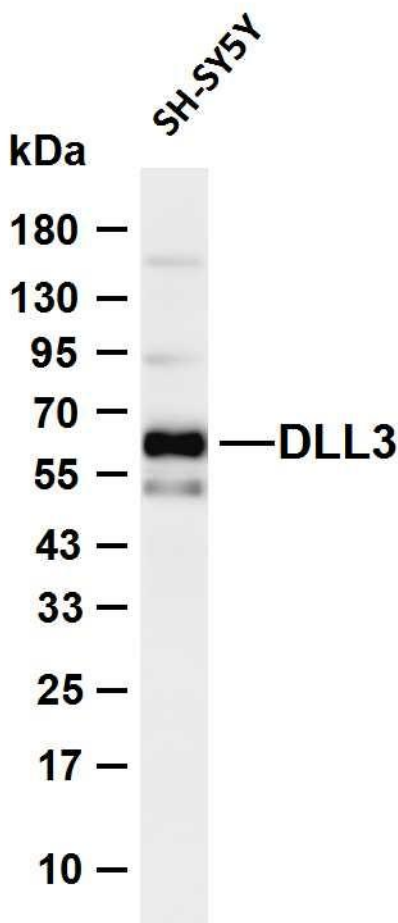
This gene encodes a member of the delta protein ligand family. This family functions as Notch ligands that are characterized by a DSL domain, EGF repeats, and a transmembrane domain. Mutations in this gene cause autosomal recessive spondylocostal dysostosis 1. Two transcript variants encoding distinct isoforms have been identified for this gene. [provided by RefSeq, Jul 2008],

matters needing attention

Avoid repeated freezing and thawing!

Usage suggestions

This product can be used in immunological reaction related experiments. For more information, please consult technical personnel.



Various whole cell lysates were separated by 4-20% SDS-PAGE, and the membrane was blotted with anti-DLL3 antibody. The HRP-conjugated Goat anti-Rabbit IgG (H + L) antibody was used to detect the antibody. Lane 1: SH-SY5Y Predicted band size: 65kDa Observed band size: 65kDa

