



# Rag C Rabbit mAb

<b>Catalog No</b>	YP-rAb-17112
<b>Isotype</b>	IgG
<b>Reactivity</b>	Human,Mouse,Rat
<b>Applications</b>	WB,IF,IP,ELISA
<b>Gene Name</b>	RRAGC
<b>Protein Name</b>	Ras-related GTP-binding protein C
<b>Purification Process</b>	Protein A
<b>Specificity</b>	Endogenous
<b>Formulation</b>	PBS, 50% glycerol, 0.05% Proclin 300, 0.05%BSA
<b>Source</b>	Monoclonal, Rabbit,IgG
<b>Dilution</b>	WB 1:500-1:2000; IF 1:200-1:1000; ELISA 1:5000-1:20000; IP 1:50-1:200;
<b>Concentration</b>	0.5 mg/ml
<b>Purity</b>	≥90%
<b>Storage Stability</b>	-15° C to -25° C/1 year(Do not lower than -25° C)
<b>Synonyms</b>	RRAGC ; Ras-related GTP-binding protein C ; Rag C ; RagC ; GTPase-interacting protein 2 ; TIB929
<b>Observed Band</b>	54kD
<b>Calculated Molecular Weight</b>	44kD
<b>Cell Pathway</b>	Cytoplasm . Nucleus . Lysosome . Predominantly cytoplasmic. May shuttle between the cytoplasm and nucleus, depending on the bound nucleotide state of associated RRAGA (PubMed:11073942). .
<b>Tissue Specificity</b>	Lymph,Ovary,
<b>Function</b>	Has guanine nucleotide-binding activity but weak intrinsic GTPase activity.,similarity:Belongs to the GTR/RAG GTP-binding protein family.,subcellular location:Predominantly cytoplasmic. May shuttle between the cytoplasm and nucleus, depending on the bound nucleotide state of associated RRAGA.,subunit:Forms a heterodimer with RRAGA in a sequence-independent manner. Binds GTP. Interacts with NOL8 and RRAGB.,
<b>Background</b>	This gene encodes a member of the GTR/RAG GTP-binding protein family. The encoded protein is a monomeric guanine nucleotide-binding protein which forms a heterodimer with RRAGA and RRAGB and is primarily localized to the cytoplasm. The encoded protein promotes intracellular localization of the mTOR complex. Alternative splicing results in multiple transcript variants. [provided by RefSeq,

## 杭州臻优品生物科技有限公司

### 热销产品:

蛋白、一抗、抗体对、ELISA试剂盒、生化试剂盒  
CCK8试剂盒、QPCR检测试剂盒

### 检测服务:

ELISA检测及定制服务 | 生化检测 | PCR、QPCR检测 | WB检测  
ICO-IP检测 | 切片 | 染色 | 免疫组化 | 免疫荧光 | 透射电镜全套  
| 宏基因组、转录组、基因组、蛋白组、代谢组测序



关注官网



关注客服



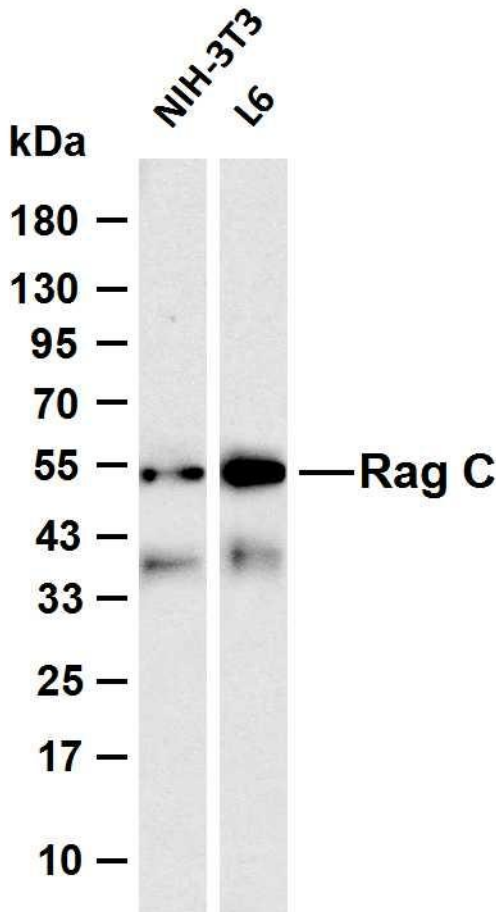
Dec 2012],

**matters needing attention**

Avoid repeated freezing and thawing!

**Usage suggestions**

This product can be used in immunological reaction related experiments. For more information, please consult technical personnel.



Various whole cell lysates were separated by 4-20% SDS-PAGE, and the membrane was blotted with anti-Rag C antibody. The HRP-conjugated Goat anti-Rabbit IgG (H + L) antibody was used to detect the antibody. Lane 1: NIH-3T3 Lane 2: L6 Predicted band size: 44kDa Observed band size: 54kDa

杭州臻优品生物科技有限公司

热销产品:

蛋白、一抗、抗体对、ELISA试剂盒、生化试剂盒  
CCK8试剂盒、QPCR检测试剂盒

检测服务:

ELISA检测及定制服务 | 生化检测 | PCR、QPCR检测 | WB检测  
ICO-IP检测 | 切片 | 染色 | 免疫组化 | 免疫荧光 | 透射电镜全套  
| 宏基因组、转录组、基因组、蛋白组、代谢组测序



关注官网



关注客服