



Haptoglobin Rabbit mAb

Catalog No	YP-rAb-17111
Isotype	IgG
Reactivity	Human,Mouse,Rat
Applications	WB,IHC,IF,ELISA
Gene Name	HP
Protein Name	Haptoglobin (Zonulin) [Cleaved into: Haptoglobin alpha chain; Haptoglobin beta chain]
Purification Process	Protein A
Specificity	Endogenous
Formulation	PBS, 50% glycerol, 0.05% Proclin 300, 0.05%BSA
Source	Monoclonal, Rabbit,IgG
Dilution	IHC 1:200-1:1000; WB 1:2000-1:10000; IF 1:200-1:1000; ELISA 1:5000-1:20000; Note: For IHC, we suggest antigen retrieval with TE buffer pH 9.0
Concentration	0.5 mg/ml
Purity	≥90%
Storage Stability	-15° C to -25° C/1 year(Do not lower than -25° C)
Synonyms	Haptoglobin ; Zonulin ; [Cleaved into: Haptoglobin alpha chain ; Haptoglobin beta chain]
Observed Band	39kD
Calculated Molecular Weight	39kD
Cell Pathway	Secreted.
Tissue Specificity	Expressed by the liver and secreted in plasma.
Function	Caution:Although homologous to serine proteases, it has lost all essential catalytic residues and has no enzymatic activity.,Function:Haptoglobin combines with free plasma hemoglobin, preventing loss of iron through the kidneys and protecting the kidneys from damage by hemoglobin, while making the hemoglobin accessible to degradative enzymes.,online information:Haptoglobin entry,online information:The Singapore human mutation and polymorphism database,polymorphism:In the human populations there are two major allelic forms, alpha-1 with 83 residues and alpha-2 with 142 residues. These alleles determine the 3 major phenotypes HP*1F/HP*1S and HP*2FS. The two main alleles of HP*1 are called HP*1F (fast) and HP*1S (slow),similarity:Belongs to the peptidase S1 family.,similarity:Contains 1 peptidase S1 domain.,similarity:Contains 1 Sushi (CCP/SCR) domain.,similarity:Contains 2





Sushi (CCP/SCR) domains.,subunit:Tetramer of two alpha and two beta chains.,tissue specificity:Expressed by the liver and secreted in plasma.,tissue specificity:In adult liver the amount of HPR mRNA is at the lower limit of detection, therefore the extent of its expression is at most less than 1000-fold that of the HP1F gene. No HPR mRNA can be detected in fetal liver. Expressed in hepatoma G2 and leukemia molt-4 cell lines.,

Background

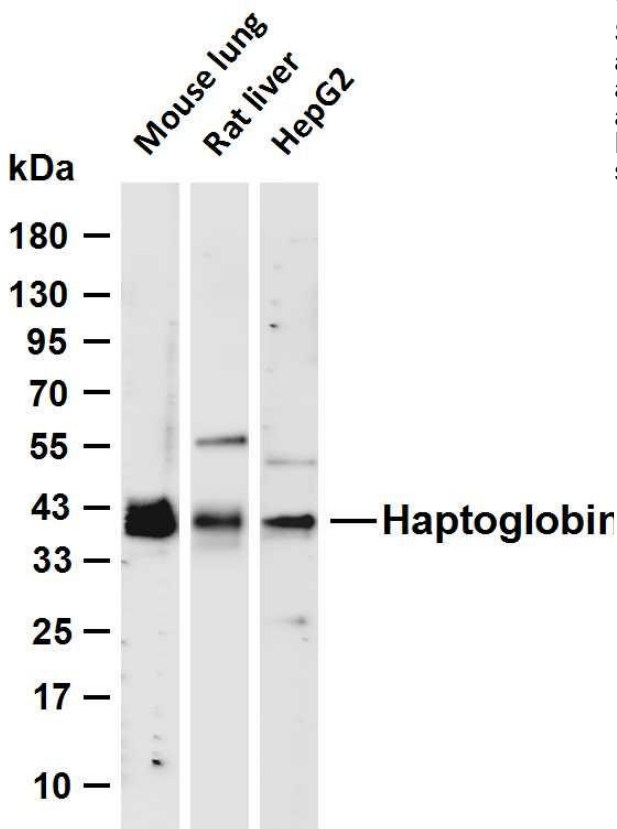
haptoglobin(HP) Homo sapiens This gene encodes a preproprotein, which is processed to yield both alpha and beta chains, which subsequently combine as a tetramer to produce haptoglobin. Haptoglobin functions to bind free plasma hemoglobin, which allows degradative enzymes to gain access to the hemoglobin, while at the same time preventing loss of iron through the kidneys and protecting the kidneys from damage by hemoglobin. Mutations in this gene and/or its regulatory regions cause ahaptoglobinemia or hypohaptoglobinemia. This gene has also been linked to diabetic nephropathy, the incidence of coronary artery disease in type 1 diabetes, Crohn's disease, inflammatory disease behavior, primary sclerosing cholangitis, susceptibility to idiopathic Parkinson's disease, and a reduced incidence of Plasmodium falciparum malaria. The protein encoded also exhibits antimicrobial activity against bacteria. A similar duplicated gene is located nex

matters needing attention

Avoid repeated freezing and thawing!

Usage suggestions

This product can be used in immunological reaction related experiments. For more information, please consult technical personnel.



Various whole cell lysates were separated by 4-20% SDS-PAGE, and the membrane was blotted with anti-Haptoglobin antibody. The HRP-conjugated Goat anti-Rabbit IgG (H + L) antibody was used to detect the antibody. Lane 1: Mouse lung Lane 2: Rat liver Lane 3: HepG2 Predicted band size: 39kDa Observed band size: 39kDa

