



TEF-1 Rabbit mAb

Catalog No	YP-rAb-17107
Isotype	IgG
Reactivity	Human,Mouse,Rat
Applications	WB,IHC,IF,IP,ELISA
Gene Name	TEAD1
Protein Name	Transcriptional enhancer factor TEF-1
Purification Process	Protein A
Specificity	Endogenous
Formulation	PBS, 50% glycerol, 0.05% Proclin 300, 0.05%BSA
Source	Monoclonal, Rabbit,IgG
Dilution	IHC 1:200-1:1000; WB 1:1000-1:5000; IF 1:200-1:1000; ELISA 1:5000-1:20000; IP 1:50-1:200; Note: For IHC, we suggest antigen retrieval with TE buffer pH 9.0
Concentration	0.5 mg/ml
Purity	≥90%
Storage Stability	-15° C to -25° C/1 year(Do not lower than -25° C)
Synonyms	TEAD1 ; TCF13 ; TEF1 ; Transcriptional enhancer factor TEF-1 ; NTEF-1 ; Protein GT-IIC ; TEA domain family member 1 ; TEAD-1 ; Transcription factor 13 ; TCF-13
Observed Band	55kD
Calculated Molecular Weight	48kD
Cell Pathway	Nucleus.
Tissue Specificity	Preferentially expressed in skeletal muscle. Lower levels in pancreas, placenta, and heart.
Function	Disease:Defects in TEAD1 are the cause of Sveinsson chorioretinal atrophy (SCRA) [MIM:108985]; also known as atrophia areata (AA) or helicoidal peripapillary chorioretinal degeneration (HPCD). SCRA is characterized by symmetrical lesions radiating from the optic disk involving the retina and the choroid.,Function:Binds specifically and cooperatively to the SPH and GT-IIC "enhansons" (5'-GTGGAATGT-3') and activates transcription in vivo in a cell-specific manner. The activation function appears to be mediated by a limiting cell-specific transcriptional intermediary factor (TIF). Involved in cardiac development. Binds to the M-CAT motif.,similarity:Contains 1 TEA DNA-binding domain.,tissue specificity:Preferentially expressed in skeletal muscle. Lower levels in pancreas, placenta, and heart.,

杭州臻优品生物科技有限公司

热销产品:

蛋白、一抗、抗体对、ELISA试剂盒、生化试剂盒
CCK8试剂盒、QPCR检测试剂盒

检测服务:

ELISA检测及定制服务 | 生化检测 | PCR、QPCR检测 | WB检测
| CO-IP检测 | 切片 | 染色 | 免疫组化 | 免疫荧光 | 透射电镜全套
| 宏基因组、转录组、基因组、蛋白组、代谢组测序



关注官网



关注客服



Background

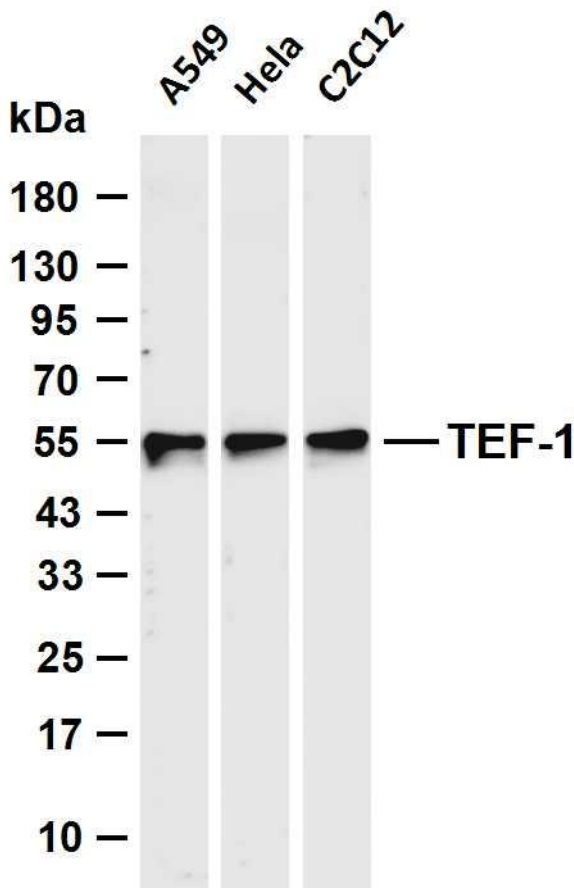
This gene encodes a ubiquitous transcriptional enhancer factor that is a member of the TEA/ATTS domain family. This protein directs the transactivation of a wide variety of genes and, in placental cells, also acts as a transcriptional repressor. Mutations in this gene cause Sveinsson's chorioretinal atrophy. Additional transcript variants have been described but their full-length natures have not been experimentally verified. [provided by RefSeq, May 2010],

matters needing attention

Avoid repeated freezing and thawing!

Usage suggestions

This product can be used in immunological reaction related experiments. For more information, please consult technical personnel.



Various whole cell lysates were separated by 4-20% SDS-PAGE, and the membrane was blotted with anti-TEF-1 antibody. The HRP-conjugated Goat anti-Rabbit IgG (H + L) antibody was used to detect the antibody. Lane 1: A549 Lane 2: HeLa Lane 3: C2C12
Predicted band size: 48kDa Observed band size: 55kDa

