



GCS- α -1 Rabbit mAb

Catalog No	YP-rAb-17102
Isotype	IgG
Reactivity	Human
Applications	WB,IF,ELISA
Gene Name	GUCY1A3
Protein Name	Guanylate cyclase soluble subunit alpha-3
Purification Process	Protein A
Specificity	Endogenous
Formulation	PBS, 50% glycerol, 0.05% Proclin 300, 0.05%BSA
Source	Monoclonal, Rabbit,IgG
Dilution	WB 1:1000-1:5000; IF 1:200-1:1000; ELISA 1:5000-1:20000;
Concentration	0.5 mg/ml
Purity	$\geq 90\%$
Storage Stability	-15° C to -25° C/1 year(Do not lower than -25° C)
Synonyms	GUCY1A3 ; GUC1A3 ; GUCSA3 ; GUCY1A1 ; Guanylate cyclase soluble subunit alpha-3 ; GCS-alpha-3 ; GCS-alpha-1 ; Soluble guanylate cyclase large subunit
Observed Band	70kD
Calculated Molecular Weight	77kD
Cell Pathway	Cytoplasm .
Tissue Specificity	Detected in brain cortex and lung (at protein level).
Function	Catalytic activity:GTP = 3',5'-cyclic GMP + diphosphate.,enzyme regulation:Activated by nitric oxide in the presence of magnesium or manganese ions.,miscellaneous:There are two types of guanylate cyclases: soluble forms and membrane-associated receptor forms.,similarity:Belongs to the adenylyl cyclase class-4/guanylyl cyclase family.,similarity:Contains 1 guanylate cyclase domain.,subunit:Heterodimer of an alpha and a beta chain.,
Background	Soluble guanylate cyclases are heterodimeric proteins that catalyze the conversion of GTP to 3',5'-cyclic GMP and pyrophosphate. The protein encoded by this gene is an alpha subunit of this complex and it interacts with a beta subunit to form the guanylate cyclase enzyme, which is activated by nitric oxide. Several transcript variants encoding a few different isoforms have been found for this gene. [provided by RefSeq, Jan 2012],

杭州臻优品生物科技有限公司

热销产品:

蛋白、一抗、抗体对、ELISA试剂盒、生化试剂盒
CCK8试剂盒、QPCR检测试剂盒

检测服务:

ELISA检测及定制服务 | 生化检测 | PCR、QPCR检测 | WB检测
ICO-IP检测 | 切片 | 染色 | 免疫组化 | 免疫荧光 | 透射电镜全套
| 宏基因组、转录组、基因组、蛋白组、代谢组测序



关注官网



关注客服

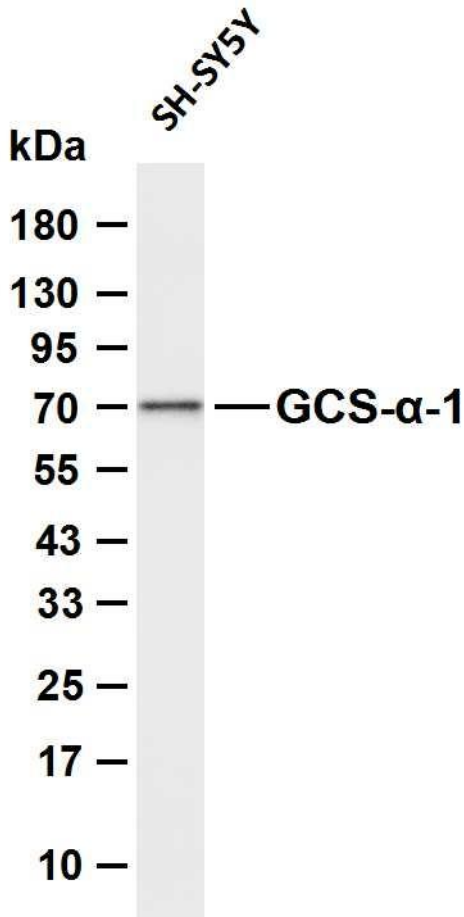


matters needing attention

Avoid repeated freezing and thawing!

Usage suggestions

This product can be used in immunological reaction related experiments. For more information, please consult technical personnel.



Various whole cell lysates were separated by 4-20% SDS-PAGE, and the membrane was blotted with anti-GCS- α -1 antibody. The HRP-conjugated Goat anti-Rabbit IgG (H + L) antibody was used to detect the antibody. Lane 1: SH-SY5Y Predicted band size: 77kDa Observed band size: 70kDa

杭州臻优品生物科技有限公司

热销产品:

蛋白、一抗、抗体对、ELISA试剂盒、生化试剂盒
CCK8试剂盒、QPCR检测试剂盒

检测服务:

ELISA检测及定制服务 | 生化检测 | PCR、QPCR检测 | WB检测
ICO-IP检测 | 切片 | 染色 | 免疫组化 | 免疫荧光 | 透射电镜全套
| 宏基因组、转录组、基因组、蛋白组、代谢组测序



关注官网



关注客服