



# MYT1 Rabbit mAb

<b>Catalog No</b>	YP-rAb-17100
<b>Isotype</b>	IgG
<b>Reactivity</b>	Human,Mouse,Rat
<b>Applications</b>	WB,IHC,IF,ELISA
<b>Gene Name</b>	PKMYT1
<b>Protein Name</b>	Membrane-associated tyrosine- and threonine-specific cdc2-inhibitory kinase
<b>Purification Process</b>	Protein A
<b>Specificity</b>	Endogenous
<b>Formulation</b>	PBS, 50% glycerol, 0.05% Proclin 300, 0.05%BSA
<b>Source</b>	Monoclonal, Rabbit,IgG
<b>Dilution</b>	IHC 1:200-1:500; WB 1:1000-1:5000; IF 1:200-1:1000; ELISA 1:5000-1:20000; Note: For IHC, we suggest antigen retrieval with TE buffer pH 9.0
<b>Concentration</b>	0.5 mg/ml
<b>Purity</b>	≥90%
<b>Storage Stability</b>	-15° C to -25° C/1 year(Do not lower than -25° C)
<b>Synonyms</b>	PKMYT1 ; MYT1 ; Membrane-associated tyrosine- and threonine-specific cdc2-inhibitory kinase ; Myt1 kinase
<b>Observed Band</b>	70kD
<b>Calculated Molecular Weight</b>	55kD
<b>Cell Pathway</b>	Endoplasmic reticulum membrane ; Peripheral membrane protein . Golgi apparatus membrane ; Peripheral membrane protein .
<b>Tissue Specificity</b>	Brain,Epithelium,PCR rescued clones,
<b>Function</b>	Catalytic activity:ATP + a protein = ADP + a phosphoprotein.,Domain:The membrane-association motif is essential for the localization to membrane of Golgi stack. According to some authors, it is a transmembrane domain; the existence of a transmembrane region is however unproven.,enzyme regulation:Negatively regulated by hyperphosphorylation during mitosis. The hyperphosphorylated form does not associate with CCNB1-CDC2 complexes. The PLK1 protein kinase may be required for mitotic phosphorylation.,Function:Acts as a negative regulator of entry into mitosis (G2 to M transition) by phosphorylation of the cdc2 kinase specifically when cdc2 is complexed to cyclins. Mediates phosphorylation of cdc2 predominantly on 'Thr-14'. Also involved in Golgi fragmentation. May be involved in phosphorylation of cdc2 on 'Tyr-15' to a lesser degree, however tyrosine kinase activity is unclear and may be indirect. May be a downstream target of Notch

杭州臻优品生物科技有限公司

热销产品:

蛋白、一抗、抗体对、ELISA试剂盒、生化试剂盒  
CCK8试剂盒、QPCR检测试剂盒

检测服务:

ELISA检测及定制服务 | 生化检测 | PCR、QPCR检测 | WB检测  
| CO-IP检测 | 切片 | 染色 | 免疫组化 | 免疫荧光 | 透射电镜全套  
| 宏基因组、转录组、基因组、蛋白组、代谢组测序



关注官网



关注客服



signaling pathway during eye development.,PTM:Autophosphorylated. Phosphorylated by CDC2-CCNB1 complexes on undefined serine and threonine residues. The phosphorylation by CDC2-CCNB1 complexes may inhibit the catalytic activity.,sequence Caution:Chimeric cDNA.,similarity:Belongs to the protein kinase superfamily.,similarity:Belongs to the protein kinase superfamily. Ser/Thr protein kinase family. WEE1 subfamily.,similarity:Contains 1 protein kinase domain.,subunit:Interacts with CDC2-CCNB1 complex. Can also interact with PIN1 when phosphorylated by CDC2-CCNB1.,

### Background

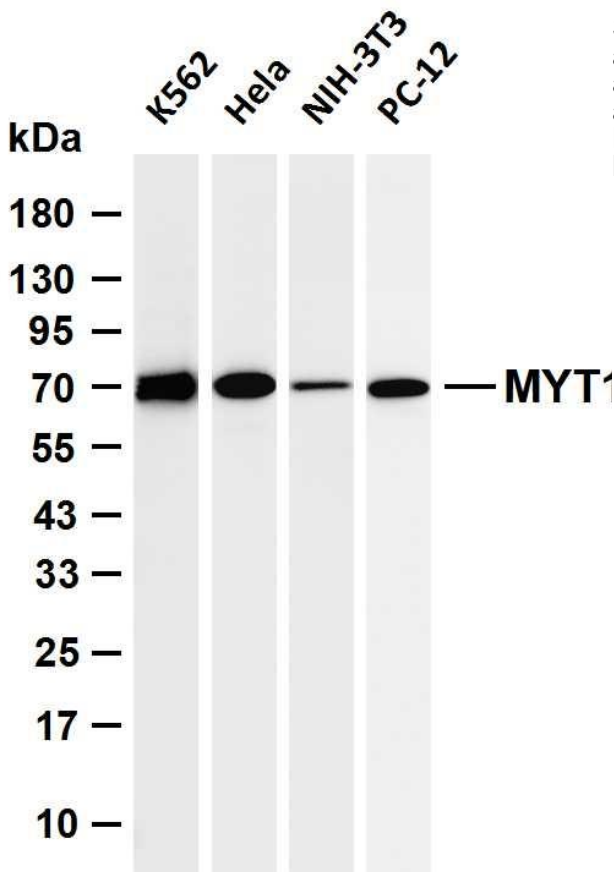
This gene encodes a member of the serine/threonine protein kinase family. The encoded protein is a membrane-associated kinase that negatively regulates the G2/M transition of the cell cycle by phosphorylating and inactivating cyclin-dependent kinase 1. The activity of the encoded protein is regulated by polo-like kinase 1. Alternatively spliced transcript variants encoding multiple isoforms have been observed for this gene. [provided by RefSeq, May 2012],

### matters needing attention

Avoid repeated freezing and thawing!

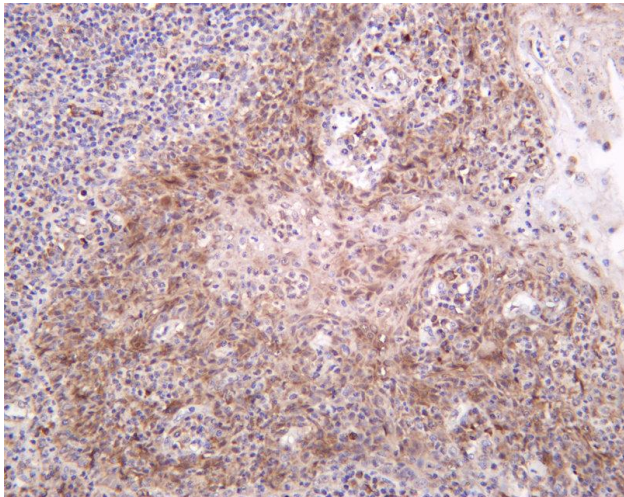
### Usage suggestions

This product can be used in immunological reaction related experiments. For more information, please consult technical personnel.



Various whole cell lysates were separated by 4-20% SDS-PAGE, and the membrane was blotted with anti-MYT1 antibody. The HRP-conjugated Goat anti-Rabbit IgG (H + L) antibody was used to detect the antibody. Lane 1: K562 Lane 2: HeLa Lane 3: NIH-3T3 Lane 4: PC-12 Predicted band size: 55kDa Observed band size: 70kDa





Human tonsil was stained with anti-MYT1 Rabbit antibody

## 杭州臻优品生物科技有限公司

### 热销产品:

蛋白、一抗、抗体对、ELISA试剂盒、生化试剂盒  
CCK8试剂盒、QPCR检测试剂盒

### 检测服务:

ELISA检测及定制服务 | 生化检测 | PCR、QPCR检测 | WB检测  
ICO-IP检测 | 切片 | 染色 | 免疫组化 | 免疫荧光 | 透射电镜全套  
| 宏基因组、转录组、基因组、蛋白组、代谢组测序



关注官网



关注客服