



# Endothelin A Receptor Rabbit mAb

<b>Catalog No</b>	YP-rAb-17095
<b>Isotype</b>	IgG
<b>Reactivity</b>	Human,Mouse,Rat
<b>Applications</b>	WB,IHC,IF,ELISA
<b>Gene Name</b>	EDNRA
<b>Protein Name</b>	Endothelin-1 receptor
<b>Purification Process</b>	Protein A
<b>Specificity</b>	Endogenous
<b>Formulation</b>	PBS, 50% glycerol, 0.05% Proclin 300, 0.05%BSA
<b>Source</b>	Monoclonal, Rabbit,IgG
<b>Dilution</b>	IHC 1:200-1:1000; WB 1:500-1:2000; IF 1:200-1:1000; ELISA 1:5000-1:20000; Note: For IHC, we suggest antigen retrieval with TE buffer pH 9.0
<b>Concentration</b>	0.5 mg/ml
<b>Purity</b>	≥90%
<b>Storage Stability</b>	-15° C to -25° C/1 year(Do not lower than -25° C)
<b>Synonyms</b>	EDNRA ; ETA ; ETRA ; Endothelin-1 receptor ; Endothelin A receptor ; ET-A ; ETA-R ; hET-AR
<b>Observed Band</b>	65kD
<b>Calculated Molecular Weight</b>	49kD
<b>Cell Pathway</b>	Cell membrane; Multi-pass membrane protein.
<b>Tissue Specificity</b>	Isoform 1, isoform 3 and isoform 4 are expressed in a variety of tissues, with highest levels in the aorta and cerebellum, followed by lung, atrium and cerebral cortex, lower levels in the placenta, kidney, adrenal gland, duodenum, colon, ventricle and liver but no expression in umbilical vein endothelial cells. Within the placenta, isoform 1, isoform 2, isoform 3 and isoform 4 are expressed in the villi and stem villi vessels.
<b>Function</b>	Receptor for endothelin-1. Mediates its action by association with G proteins that activate a phosphatidylinositol-calcium second messenger system. The rank order of binding affinities for ET-A is: ET1 > ET2 >> ET3.,similarity:Belongs to the G-protein coupled receptor 1 family.,subunit:Interacts with HDAC7 and HTATIP.,tissue specificity:Isoform 1, isoform 3 and isoform 4 are expressed in a variety of tissues, with highest levels in the aorta and cerebellum, followed by lung, atrium and cerebral cortex, lower levels in the placenta, kidney, adrenal gland, duodenum, colon, ventricle and liver but no expression in umbilical vein





endothelial cells. Within the placenta, isoform 1, isoform 2, isoform 3 and isoform 4 are expressed in the villi and stem villi vessels.,

### Background

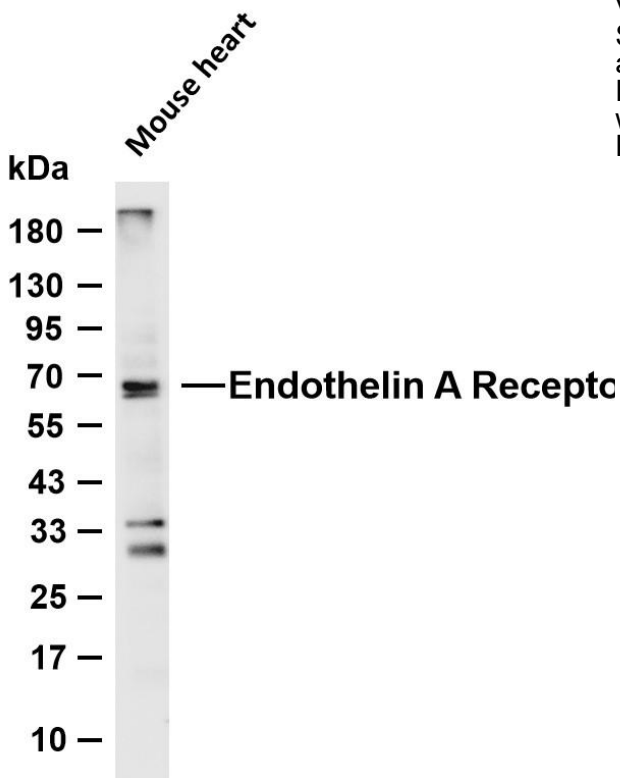
This gene encodes the receptor for endothelin-1, a peptide that plays a role in potent and long-lasting vasoconstriction. This receptor associates with guanine-nucleotide-binding (G) proteins, and this coupling activates a phosphatidylinositol-calcium second messenger system. Polymorphisms in this gene have been linked to migraine headache resistance. Alternative splicing results in multiple transcript variants. [provided by RefSeq, Oct 2009],

### matters needing attention

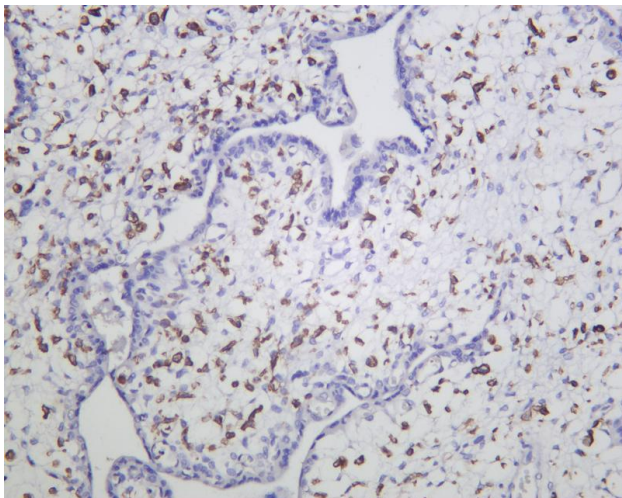
Avoid repeated freezing and thawing!

### Usage suggestions

This product can be used in immunological reaction related experiments. For more information, please consult technical personnel.



Various whole cell lysates were separated by 4-20% SDS-PAGE, and the membrane was blotted with anti-Endothelin A Receptor antibody. The HRP-conjugated Goat anti-Rabbit IgG (H + L) antibody was used to detect the antibody. Lane 1: Mouse heart Predicted band size: 49kDa Observed band size: 65kDa



Human placenta was stained with anti-Endothelin A Receptor Rabbit antibody

## 杭州臻优品生物科技有限公司

### 热销产品:

蛋白、一抗、抗体对、ELISA试剂盒、生化试剂盒  
CCK8试剂盒、QPCR检测试剂盒

### 检测服务:

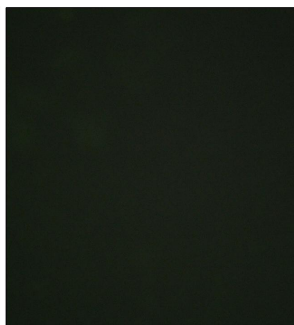
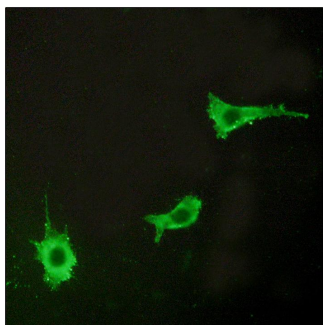
ELISA检测及定制服务 | 生化检测 | PCR、QPCR检测 | WB检测  
ICO-IP检测 | 切片 | 染色 | 免疫组化 | 免疫荧光 | 透射电镜全套  
| 宏基因组、转录组、基因组、蛋白组、代谢组测序



关注官网



关注客服



Immunofluorescence analysis of LOVO cells, using EDNRA Antibody. The picture on the right is blocked with the synthesized peptide.

