



NOTCH3 Rabbit mAb

Catalog No	YP-rAb-17092
Isotype	IgG
Reactivity	Human,Rat
Applications	WB,IF,IP,ELISA
Gene Name	NOTCH3
Protein Name	NOTCH3 (Cleaved-Asp1628)
Purification Process	Protein A
Specificity	Endogenous
Formulation	PBS, 50% glycerol, 0.05% Proclin 300, 0.05%BSA
Source	Monoclonal, Rabbit,IgG
Dilution	WB 1:2000-1:10000; IF 1:200-1:1000; ELISA 1:5000-1:20000; IP 1:50-1:200;
Concentration	0.5 mg/ml
Purity	≥90%
Storage Stability	-15° C to -25° C/1 year(Do not lower than -25° C)
Synonyms	Neurogenic locus notch homolog protein 3 ; Notch 3 ; [Cleaved into: Notch 3 extracellular truncation ; Notch 3 intracellular domain]
Observed Band	90kD(fragment),270kD(full length)
Calculated Molecular Weight	244kD
Cell Pathway	Cell membrane ; Single-pass type I membrane protein.; [Notch 3 intracellular domain]: Nucleus. Following proteolytical processing NICD is translocated to the nucleus.
Tissue Specificity	Ubiquitously expressed in fetal and adult tissues.
Function	
Background	
matters needing attention	Avoid repeated freezing and thawing!
Usage suggestions	This product can be used in immunological reaction related experiments. For more information, please consult technical personnel.

杭州臻优品生物科技有限公司

热销产品:

蛋白、一抗、抗体对、ELISA试剂盒、生化试剂盒
CCK8试剂盒、QPCR检测试剂盒

检测服务:

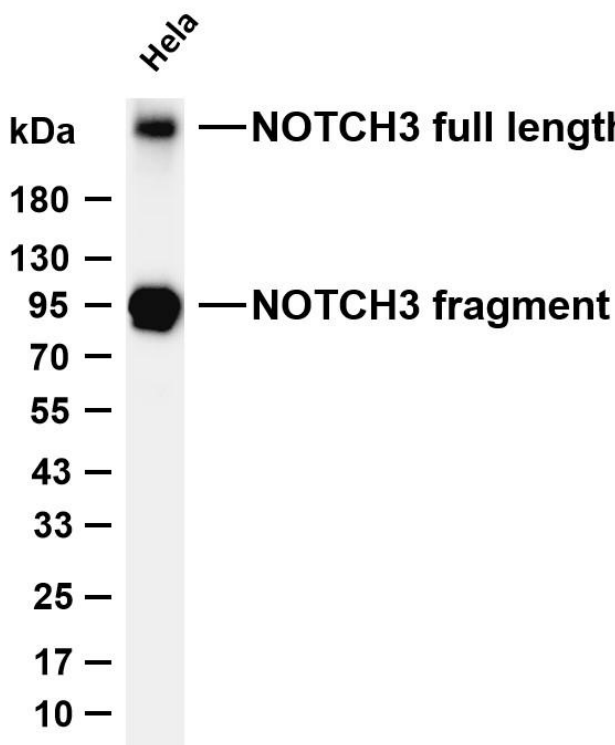
ELISA检测及定制服务 | 生化检测 | PCR、QPCR检测 | WB检测
ICO-IP检测 | 切片 | 染色 | 免疫组化 | 免疫荧光 | 透射电镜全套
| 宏基因组、转录组、基因组、蛋白组、代谢组测序



关注官网



关注客服



arious whole cell lysates were separated by 4-20% SDS-PAGE, and the membrane was blotted with anti-NOTCH3 antibody. The HRP-conjugated Goat anti-Rabbit IgG (H + L) antibody was used to detect the antibody. Lane 1: HeLa Predicted band size: 244kDa Observed band size: 90(fragment),270(full length)kDa

