



F4/80 Rabbit mAb

Catalog No	YP-rAb-17084
Isotype	IgG
Reactivity	Mouse
Applications	WB,IHC,IF,ELISA
Gene Name	EMR1
Protein Name	EGF-like module-containing mucin-like hormone receptor-like 1
Purification Process	Protein A
Specificity	Endogenous
Formulation	PBS, 50% glycerol, 0.05% Proclin 300, 0.05%BSA
Source	Monoclonal, Rabbit,IgG
Dilution	IHC 1:2000-1:8000; WB 1:2000-1:10000; IF 1:200-1:1000; ELISA 1:5000-1:20000; Note: For IHC, we suggest antigen retrieval with TE buffer pH 9.0
Concentration	0.5 mg/ml
Purity	≥90%
Storage Stability	-15° C to -25° C/1 year(Do not lower than -25° C)
Synonyms	EMR1 ; TM7LN3 ; EGF-like module-containing mucin-like hormone receptor-like 1 ; EGF-like module receptor 1 ; EMR1 hormone receptor
Observed Band	70-250kD
Calculated Molecular Weight	102kD
Cell Pathway	Cell membrane ; Multi-pass membrane protein .
Tissue Specificity	Expression is restricted to eosinophils.
Function	Alternative products:Comment=Additional isoforms seem to exist,Function:Could be involved in cell-cell interactions.,similarity:Belongs to the G-protein coupled receptor 2 family. LN-TM7 subfamily.,similarity:Contains 1 GPS domain.,similarity:Contains 6 EGF-like domains.,tissue specificity:Wide expression; increased levels in peripheral blood mononuclear cells.,
Background	This gene encodes a protein that has a domain resembling seven transmembrane G protein-coupled hormone receptors (7TM receptors) at its C-terminus. The N-terminus of the encoded protein has six EGF-like modules, separated from the transmembrane segments by a serine/threonine-rich domain, a feature reminiscent of mucin-like, single-span, integral membrane glycoproteins with adhesive properties. Multiple alternatively spliced transcript variants encoding

杭州臻优品生物科技有限公司

热销产品:

蛋白、一抗、抗体对、ELISA试剂盒、生化试剂盒
CCK8试剂盒、QPCR检测试剂盒

检测服务:

ELISA检测及定制服务 | 生化检测 | PCR、QPCR检测 | WB检测
ICO-IP检测 | 切片 | 染色 | 免疫组化 | 免疫荧光 | 透射电镜全套
| 宏基因组、转录组、基因组、蛋白组、代谢组测序



关注官网



关注客服



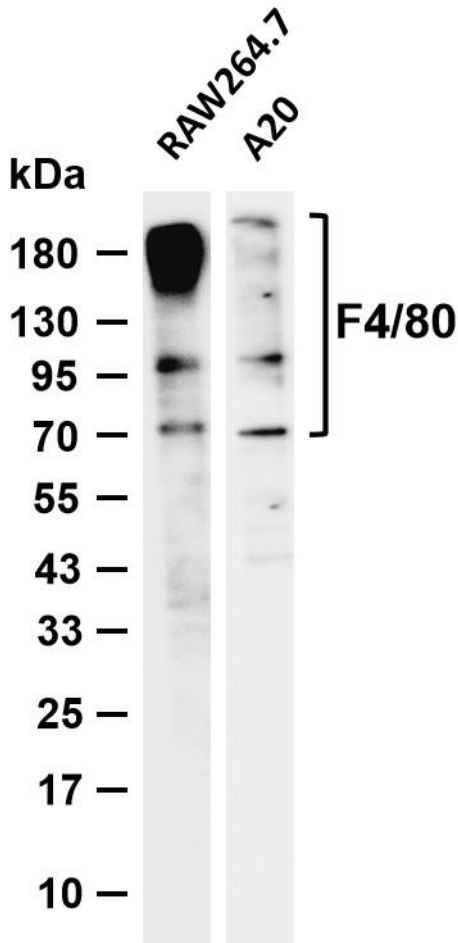
different isoforms have been found for this gene. [provided by RefSeq, Jan 2012],

matters needing attention

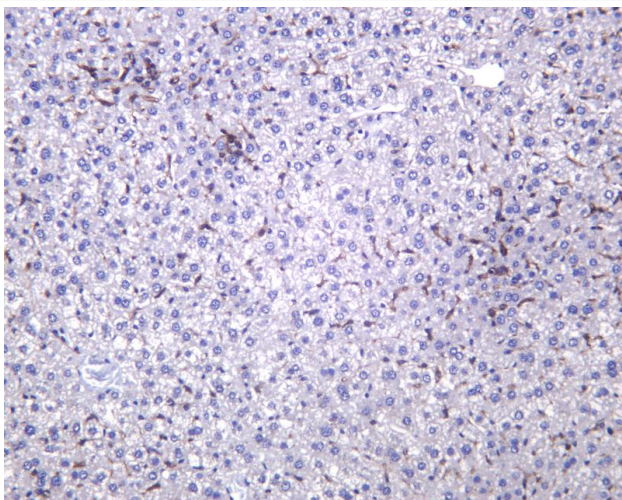
Avoid repeated freezing and thawing!

Usage suggestions

This product can be used in immunological reaction related experiments. For more information, please consult technical personnel.



Various whole cell lysates were separated by 4-20% SDS-PAGE, and the membrane was blotted with anti-F4/80 antibody. The HRP-conjugated Goat anti-Rabbit IgG (H + L) antibody was used to detect the antibody. Lane 1: RAW264.7 Lane 2: A20 Predicted band size: 102kDa Observed band size: 70-250kDa



Mouse liver was stained with anti-F4/80 Rabbit antibody

杭州臻优品生物科技有限公司

热销产品:

蛋白、一抗、抗体对、ELISA试剂盒、生化试剂盒
CCK8试剂盒、QPCR检测试剂盒

检测服务:

ELISA检测及定制服务 | 生化检测 | PCR、QPCR检测 | WB检测
ICO-IP检测 | 切片 | 染色 | 免疫组化 | 免疫荧光 | 透射电镜全套
| 宏基因组、转录组、基因组、蛋白组、代谢组测序



关注官网



关注客服