



ATG14 Rabbit mAb

Catalog No	YP-rAb-17070
Isotype	IgG
Reactivity	Human,Mouse,Rat
Applications	WB,IF,ELISA
Gene Name	ATG14 KIAA0831 ATG14L
Protein Name	Beclin 1-associated autophagy-related key regulator (Barkor) (Autophagy-related protein 14-like protein) (Atg14L)
Purification Process	Protein A
Specificity	Endogenous
Formulation	PBS, 50% glycerol, 0.05% Proclin 300, 0.05%BSA
Source	Monoclonal, Rabbit,IgG
Dilution	WB 1:2000-1:10000; IF 1:200-1:1000; ELISA 1:5000-1:20000;
Concentration	0.5 mg/ml
Purity	≥90%
Storage Stability	-15° C to -25° C/1 year(Do not lower than -25° C)
Synonyms	Beclin 1-associated autophagy-related key regulator ; Barkor ; Autophagy-related protein 14-like protein ; Atg14L ;
Observed Band	65kD
Calculated Molecular Weight	55kD
Cell Pathway	Cytoplasm . Endoplasmic reticulum membrane ; Peripheral membrane protein . Preautophagosomal structure membrane ; Peripheral membrane protein . Cytoplasmic vesicle, autophagosome membrane ; Peripheral membrane protein . Cytosolic under nutrient-rich conditions (PubMed:19050071). Following autophagy stimuli, such as starvation or rapamycin induction, predominantly detected in cytoplasmic foci, identified as isolation membranes and autophagosomes (PubMed:19050071). Accumulates on highly curved PtdIns(3)P enriched autophagic membrane via its BATS domain to sense and maintain membrane curvature (By similarity). Localizes also to discrete punctae along the ciliary axoneme and to the base of the ciliary axoneme (By similarity). .
Tissue Specificity	Brain,Epithelium,Hippocampus,Trachea,
Function	miscellaneous:The sequence shown here is derived from an EMBL/GenBank/DDBJ third party annotation (TPA) entry.,





Background

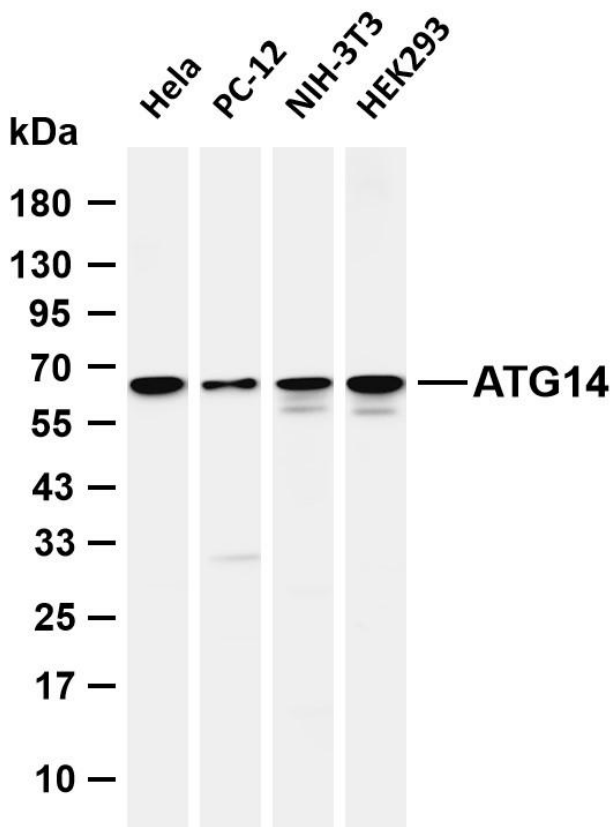
miscellaneous:The sequence shown here is derived from an EMBL/GenBank/DDBJ third party annotation (TPA) entry.,

matters needing attention

Avoid repeated freezing and thawing!

Usage suggestions

This product can be used in immunological reaction related experiments. For more information, please consult technical personnel.



Various whole cell lysates were separated by 4-20% SDS-PAGE, and the membrane was blotted with anti-ATG14 antibody. The HRP-conjugated Goat anti-Rabbit IgG (H + L) antibody was used to detect the antibody. Lane 1: HeLa Lane 2: PC-12 Lane 3: NIH-3T3 Lane 4: HEK293 Predicted band size: 55kDa Observed band size: 65kDa

