



G-CSF Rabbit mAb

Catalog No	YP-rAb-17057
Isotype	IgG
Reactivity	Human,Mouse,Rat
Applications	WB,IHC,IF,IP,ELISA
Gene Name	CSF3
Protein Name	Granulocyte colony-stimulating factor
Purification Process	Protein A
Specificity	Endogenous
Formulation	PBS, 50% glycerol, 0.05% Proclin 300, 0.05%BSA
Source	Monoclonal, Rabbit,IgG
Dilution	IHC 1:200-1:1000; WB 1:2000-1:10000; IF 1:200-1:1000; ELISA 1:5000-1:20000; IP 1:50-1:200; Note: For IHC, we suggest antigen retrieval with TE buffer pH 9.0
Concentration	0.5 mg/ml
Purity	≥90%
Storage Stability	-15° C to -25° C/1 year(Do not lower than -25° C)
Synonyms	CSF3 ; C17orf33 ; GCSF ; Granulocyte colony-stimulating factor ; G-CSF ; Pluripoietin ; Filgrastim ; Lenograstim
Observed Band	30kD
Calculated Molecular Weight	22kD
Cell Pathway	Secreted .
Tissue Specificity	
Function	Granulocyte/macrophage colony-stimulating factors are cytokines that act in hematopoiesis by controlling the production, differentiation, and function of 2 related white cell populations of the blood, the granulocytes and the monocytes-macrophages. This CSF induces granulocytes.
Background	This gene encodes a member of the IL-6 superfamily of cytokines. The encoded cytokine controls the production, differentiation, and function of granulocytes. Granulocytes are a type of white blood cell that are part of the innate immune response. A modified form of this protein is commonly administered to manage chemotherapy-induced neutropenia. Alternatively spliced transcript variants have been described for this gene. [provided by RefSeq, May 2020]



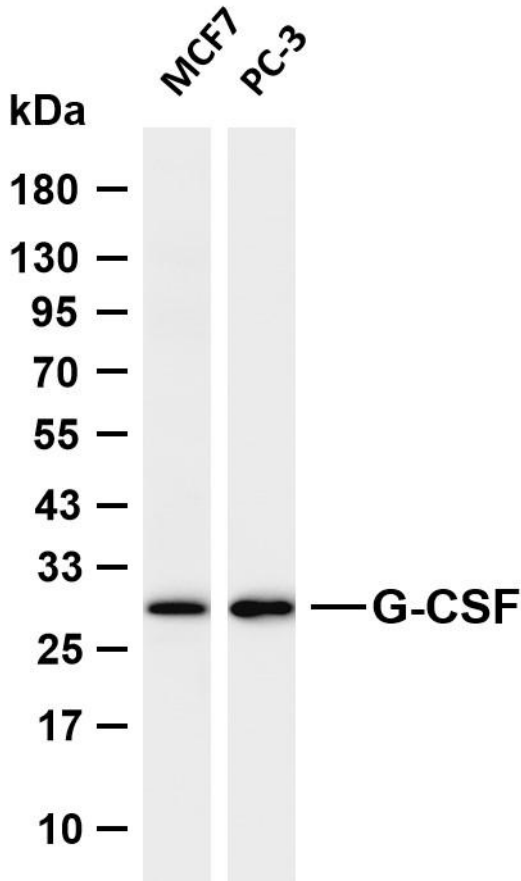


matters needing attention

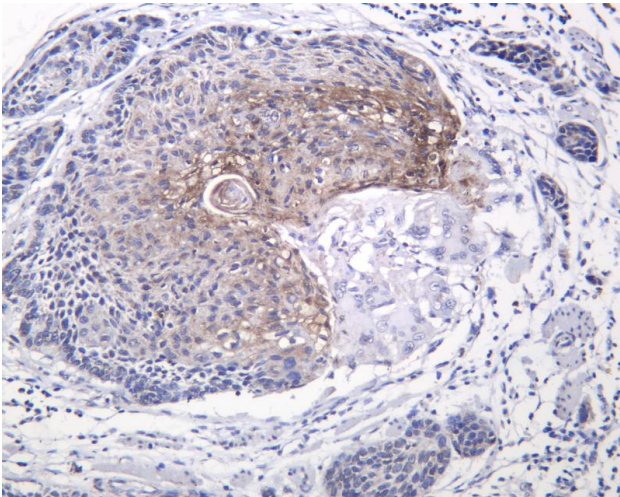
Avoid repeated freezing and thawing!

Usage suggestions

This product can be used in immunological reaction related experiments. For more information, please consult technical personnel.



Various whole cell lysates were separated by 4-20% SDS-PAGE, and the membrane was blotted with anti-G-CSF antibody. The HRP-conjugated Goat anti-Rabbit IgG (H + L) antibody was used to detect the antibody. Lane 1: MCF7 Lane 2: PC-3 Predicted band size: 22kDa Observed band size: 30kDa



Human esophagus cancer was stained with anti-G-CSF Rabbit antibody

杭州臻优品生物科技有限公司

热销产品:

蛋白、一抗、抗体对、ELISA试剂盒、生化试剂盒
CCK8试剂盒、QPCR检测试剂盒

检测服务:

ELISA检测及定制服务 | 生化检测 | PCR、QPCR检测 | WB检测
ICO-IP检测 | 切片 | 染色 | 免疫组化 | 免疫荧光 | 透射电镜全套
| 宏基因组、转录组、基因组、蛋白组、代谢组测序



关注官网



关注客服