



PABP1 Rabbit mAb

| | |
|------------------------------------|--|
| Catalog No | YP-rAb-17056 |
| Isotype | IgG |
| Reactivity | Human,Mouse,Rat |
| Applications | WB,IHC,IF,IP,ELISA |
| Gene Name | PABPC1 PAB1 PABP1 PABPC2 |
| Protein Name | Polyadenylate-binding protein 1 (PABP-1) (Poly(A)-binding protein 1) |
| Purification Process | Protein A |
| Specificity | Endogenous |
| Formulation | PBS, 50% glycerol, 0.05% Proclin 300, 0.05%BSA |
| Source | Monoclonal, Rabbit,IgG |
| Dilution | IHC 1:200-1:1000; WB 1:2000-1:10000; IF 1:200-1:1000; ELISA 1:5000-1:20000; IP 1:50-1:200; Note: For IHC, we suggest antigen retrieval with TE buffer pH 9.0 |
| Concentration | 0.5 mg/ml |
| Purity | ≥90% |
| Storage Stability | -15° C to -25° C/1 year(Do not lower than -25° C) |
| Synonyms | |
| Observed Band | 71kD |
| Calculated Molecular Weight | 71kD |
| Cell Pathway | Cytoplasm . Cytoplasm, Stress granule . Nucleus . Cell projection, lamellipodium . Localized in cytoplasmic mRNP granules containing untranslated mRNAs (PubMed:17289661). Shuttles between the cytoplasm and the nucleus (PubMed:9582337). During stress and in the absence of DDX3X, localizes to the nucleus (PubMed:21883093). At the leading edge of migrating fibroblasts, colocalizes with DDX3X (PubMed:28733330). Relocalizes to cytoplasmic stress granules upon cellular stress where it colocalizes with ENDOV (PubMed:27573237). In case of HRSV infection, localizes in cytoplasmic inclusion bodies substructures called inclusion bodies associated granules (IBAGs) (PubMed:31649314) . . |
| Tissue Specificity | Ubiquitous. |
| Function | Caution:Was originally (Ref.4) termed polyadenylate binding protein II..Domain:The RNA-binding domains RRM1 and RRM2 and the C-terminus (last 138 amino acids) regions interact with the PABPC1-interacting motif-1 (PAM1) and -2 (PAM2) of PAIP1, respectively. .Domain:The RNA-binding domains RRM2 and RRM3 and the C-terminus (last 138 amino acids) regions interact with the |

杭州臻优品生物科技有限公司

热销产品:

蛋白、一抗、抗体对、ELISA试剂盒、生化试剂盒
CCK8试剂盒、QPCR检测试剂盒

检测服务:

ELISA检测及定制服务 | 生化检测 | PCR、QPCR检测 | WB检测
ICO-IP检测 | 切片 | 染色 | 免疫组化 | 免疫荧光 | 透射电镜全套
| 宏基因组、转录组、基因组、蛋白组、代谢组测序



关注官网



关注客服



PABPC1-interacting motif-1 (PAM1) and -2 (PAM2) of PAIP2, respectively.,Function: Binds the poly(A) tail of mRNA. May be involved in cytoplasmic regulatory processes of mRNA metabolism such as pre-mRNA splicing. Its function in translational initiation regulation can either be enhanced by PAIP1 or repressed by PAIP2. Can probably bind to cytoplasmic RNA sequences other than poly(A) in vivo. May be involved in translationally coupled mRNA turnover. Implicated with other RNA-binding proteins in the cytoplasmic deadenylation/translational and decay interplay of the FOS mRNA mediated by the major coding-region determinant of instability (mCRD) domain.,PTM: Arg-493 is dimethylated, probably to asymmetric dimethylarginine.,PTM: Methylated by CARM1.,similarity: Belongs to the polyadenylate-binding protein type-1 family.,similarity: Contains 1 PABC domain.,similarity: Contains 4 RRM (RNA recognition motif) domains.,subcellular location: Shuttles between the cytoplasm and the nucleus. Relocalizes to the nucleus upon rotavirus A infection.,subunit: Component of a multi subunit autoregulatory ribonucleoprotein complex (ARC), at least composed of IGF2BP1, PABPC1 and CSDE1. Interacts with IGF2BP1. Part of a complex associated with the FOS mCRD domain and consisting of HNRPD, SYNCRIP, PAIP1 and CSDE1/UNR. Interacts with the PABPC1-interacting motif-1 (PAM1) and -2 (PAM2) of PAIP1 and PAIP2. Interacts with PAIP1 with a 1:1 stoichiometry and with PAIP2 with a 1:2 stoichiometry. The interaction with CSDE1 is direct and RNA-independent. Found in a mRNP complex with YBX2. Interacts with PAPD4/GLD2. Identified in the spliceosome C complex, at least composed of AQR, ASCC3L1, C19orf29, CDC40, CDC5L, CRNKL1, DDX23, DDX41, DDX48, DDX5, DGCR14, DHX35, DHX38, DHX8, EFTUD2, FRG1, GPATC1, HNRPA1, HNRPA2B1, HNRPA3, HNRPC, HNRPF, HNRPH1, HNRPK, HNRPM, HNRPR, HNRPU, KIAA1160, KIAA1604, LSM2, LSM3, MAGOH, MORG1, PABPC1, PLRG1, PNN, PPIE, PPIL1, PPIL3, PPWD1, PRPF19, PRPF4B, PRPF6, PRPF8, RALY, RBM22, RBM8A, RBMX, SART1, SF3A1, SF3A2, SF3A3, SF3B1, SF3B2, SF3B3, SFRS1, SKIV2L2, SNRPA1, SNRPB, SNRPB2, SNRPD1, SNRPD2, SNRPD3, SNRPE, SNRPF, SNRPG, SNW1, SRRM1, SRRM2, SYF2, SYNCRIP, TFIP11, THOC4, U2AF1, WDR57, XAB2 and ZCCHC8. Interacts with PIWIL1 (By similarity). Interacts with NFX1.,tissue specificity: Ubiquitous.,

Background

This gene encodes a poly(A) binding protein. The protein shuttles between the nucleus and cytoplasm and binds to the 3' poly(A) tail of eukaryotic messenger RNAs via RNA-recognition motifs. The binding of this protein to poly(A) promotes ribosome recruitment and translation initiation; it is also required for poly(A) shortening which is the first step in mRNA decay. The gene is part of a small gene family including three protein-coding genes and several pseudogenes.[provided by RefSeq, Aug 2010],

matters needing attention

Avoid repeated freezing and thawing!

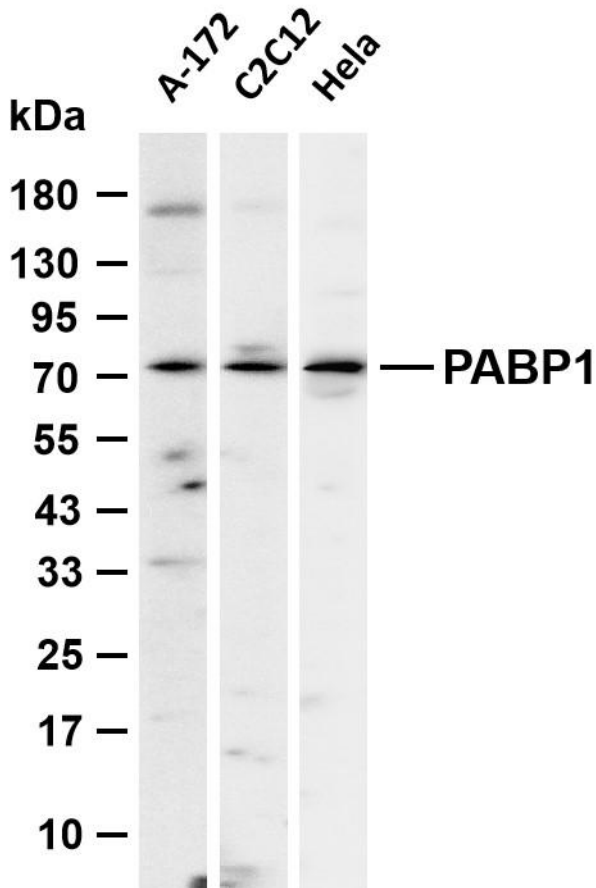
Usage suggestions

This product can be used in immunological reaction related experiments. For more information, please consult technical personnel.





Various whole cell lysates were separated by 4-20% SDS-PAGE, and the membrane was blotted with anti-PABP1 antibody. The HRP-conjugated Goat anti-Rabbit IgG (H + L) antibody was used to detect the antibody. Lane 1: A-172 Lane 2: C2C12 Lane 3: HeLa
Predicted band size: 71kDa Observed band size: 71kDa



杭州臻优品生物科技有限公司

热销产品:

蛋白、一抗、抗体对、ELISA试剂盒、生化试剂盒
CCK8试剂盒、QPCR检测试剂盒

检测服务:

ELISA检测及定制服务 | 生化检测 | PCR、QPCR检测 | WB检测
ICO-IP检测 | 切片 | 染色 | 免疫组化 | 免疫荧光 | 透射电镜全套
| 宏基因组、转录组、基因组、蛋白组、代谢组测序



关注官网



关注客服