



Synaptopodin Rabbit mAb

Catalog No	YP-rAb-17055
Isotype	IgG
Reactivity	Human,Mouse,Rat
Applications	WB,IHC,IF,IP,ELISA
Gene Name	SYNPO KIAA1029
Protein Name	Synaptopodin
Purification Process	Protein A
Specificity	Endogenous
Formulation	PBS, 50% glycerol, 0.05% Proclin 300, 0.05%BSA
Source	Monoclonal, Rabbit,IgG
Dilution	IHC 1:200-1:1000; WB 1:2000-1:10000; IF 1:200-1:1000; ELISA 1:5000-1:20000; IP 1:50-1:200; Note: For IHC, we suggest antigen retrieval with TE buffer pH 9.0
Concentration	0.5 mg/ml
Purity	≥90%
Storage Stability	-15° C to -25° C/1 year(Do not lower than -25° C)
Synonyms	
Observed Band	100kD
Calculated Molecular Weight	99kD
Cell Pathway	Cytoplasm, cytoskeleton . Cell junction, tight junction . Perikaryon . Cell projection, dendritic spine . Cell junction, synapse, postsynaptic density . Cell junction, synapse . Cytoplasm, cytosol . Localized at the tight junction of cells. In brain, localized to the postsynaptic densities and in the perikarya. Associated with dendritic spines of a subset of synapses. .
Tissue Specificity	Expressed in cerebral cortex.
Function	Actin-associated protein that may play a role in modulating actin-based shape and motility of dendritic spines and renal podocyte foot processes. Seems to be essential for the formation of spine apparatuses in spines of telencephalic neurons, which is involved in synaptic plasticity (By similarity).
Background	
matters needing attention	Avoid repeated freezing and thawing!

杭州臻优品生物科技有限公司

热销产品:

蛋白、一抗、抗体对、ELISA试剂盒、生化试剂盒
CCK8试剂盒、QPCR检测试剂盒

检测服务:

ELISA检测及定制服务 | 生化检测 | PCR、QPCR检测 | WB检测
ICO-IP检测 | 切片 | 染色 | 免疫组化 | 免疫荧光 | 透射电镜全套
| 宏基因组、转录组、基因组、蛋白组、代谢组测序



关注官网

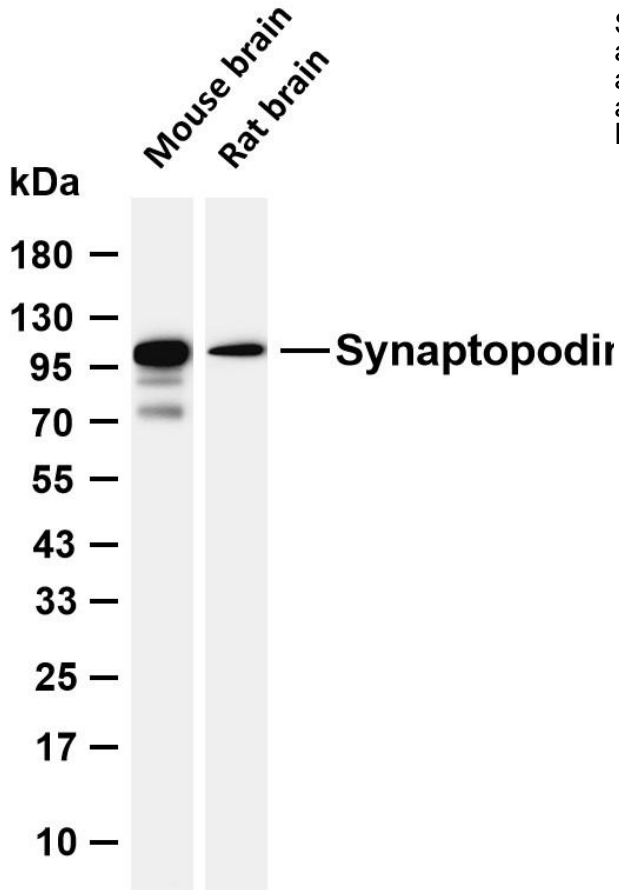


关注客服

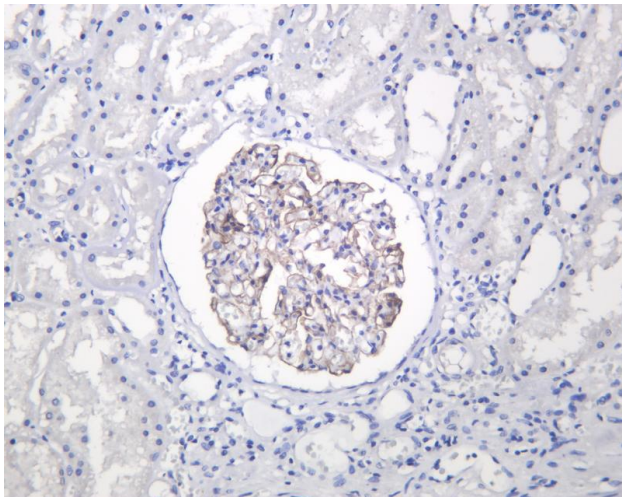


Usage suggestions

This product can be used in immunological reaction related experiments. For more information, please consult technical personnel.



Various whole cell lysates were separated by 4-20% SDS-PAGE, and the membrane was blotted with anti-Synaptopodin antibody. The HRP-conjugated Goat anti-Rabbit IgG (H + L) antibody was used to detect the antibody. Lane 1: Mouse brain Lane 2: Rat brain Predicted band size: 99kDa Observed band size: 100kDa



Human kidney was stained with anti-Synaptopodin Rabbit antibody

