



RIP3 Rabbit mAb

Catalog No	YP-rAb-17053
Isotype	IgG
Reactivity	Human
Applications	WB,IHC,IF,IP,ELISA
Gene Name	RIPK3 RIP3
Protein Name	Receptor-interacting serine/threonine-protein kinase 3 (RIP-like protein kinase 3) (Receptor-interacting protein 3) (RIP-3)
Purification Process	Protein A
Specificity	Endogenous
Formulation	PBS, 50% glycerol, 0.05% Proclin 300, 0.05%BSA
Source	Monoclonal, Rabbit,IgG
Dilution	IHC 1:200-1:1000; WB 1:2000-1:10000; IF 1:200-1:1000; ELISA 1:5000-1:20000; IP 1:50-1:200; Note: For IHC, we suggest antigen retrieval with TE buffer pH 9.0
Concentration	0.5 mg/ml
Purity	≥90%
Storage Stability	-15° C to -25° C/1 year(Do not lower than -25° C)
Synonyms	Receptor-interacting serine/threonine-protein kinase 3 ; RIP-like protein kinase 3 ; Receptor-interacting protein 3 ; RIP-3 ;
Observed Band	57kD
Calculated Molecular Weight	57kD
Cell Pathway	Cytoplasm, cytosol . Nucleus . Mainly cytoplasmic. Present in the nucleus in response to influenza A virus (IAV) infection. .
Tissue Specificity	Highly expressed in the pancreas. Detected at lower levels in heart, placenta, lung and kidney. ; [Isoform 3]: Expression is significantly increased in colon and lung cancers.
Function	Catalytic activity:ATP + a protein = ADP + a phosphoprotein.,Function:Promotes apoptosis.,PTM:Autophosphorylated.,similarity:Belongs to the protein kinase superfamily. TKL Ser/Thr protein kinase family.,similarity:Contains 1 protein kinase domain.,subunit:Binds TRAF2 and RIPK1 and is recruited to the TNFR-1 signaling complex.,tissue specificity:Highly expressed in the pancreas. Detected at lower levels in heart, placenta, lung and kidney. Isoform 3 is significantly increased in colon and lung cancers.,
Background	The product of this gene is a member of the receptor-interacting protein (RIP) family of serine/threonine protein kinases, and contains a C-terminal domain unique from other RIP family members. The encoded protein is predominantly

杭州臻优品生物科技有限公司

热销产品:

蛋白、一抗、抗体对、ELISA试剂盒、生化试剂盒
CCK8试剂盒、QPCR检测试剂盒

检测服务:

ELISA检测及定制服务 | 生化检测 | PCR、QPCR检测 | WB检测
ICO-IP检测 | 切片 | 染色 | 免疫组化 | 免疫荧光 | 透射电镜全套
| 宏基因组、转录组、基因组、蛋白组、代谢组测序



关注官网



关注客服



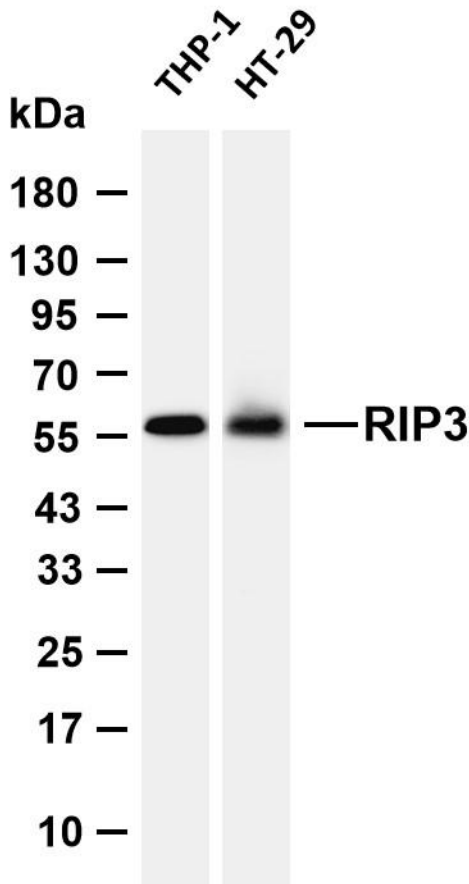
localized to the cytoplasm, and can undergo nucleocytoplasmic shuttling dependent on novel nuclear localization and export signals. It is a component of the tumor necrosis factor (TNF) receptor-I signaling complex, and can induce apoptosis and weakly activate the NF-kappaB transcription factor. [provided by RefSeq, Jul 2008],

matters needing attention

Avoid repeated freezing and thawing!

Usage suggestions

This product can be used in immunological reaction related experiments. For more information, please consult technical personnel.



Various whole cell lysates were separated by 4-20% SDS-PAGE, and the membrane was blotted with anti-RIP3 antibody. The HRP-conjugated Goat anti-Rabbit IgG (H + L) antibody was used to detect the antibody. Lane 1: THP-1 Lane 2: HT-29 Predicted band size: 57kDa Observed band size: 57kDa

