



TIM 3 Rabbit mAb

| | |
|------------------------------------|--|
| Catalog No | YP-rAb-17051 |
| Isotype | IgG |
| Reactivity | Human,Mouse,Rat |
| Applications | WB,IHC,IF,IP,ELISA |
| Gene Name | HAVCR2 TIM3 TIMD3 |
| Protein Name | Hepatitis A virus cellular receptor 2 (HAVcr-2) (T-cell immunoglobulin and mucin domain-containing protein 3) (TIMD-3) (T-cell membrane protein 3) (TIM-3) |
| Purification Process | Protein A |
| Specificity | Endogenous |
| Formulation | PBS, 50% glycerol, 0.05% Proclin 300, 0.05%BSA |
| Source | Monoclonal, Rabbit,IgG |
| Dilution | IHC 1:200-1:1000; WB 1:1000-1:5000; IF 1:200-1:1000; ELISA 1:5000-1:20000; IP 1:50-1:200; Note: For IHC, we suggest antigen retrieval with TE buffer pH 9.0 |
| Concentration | 0.5 mg/ml |
| Purity | ≥90% |
| Storage Stability | -15° C to -25° C/1 year(Do not lower than -25° C) |
| Synonyms | TIM3 ; CD366 ; TIM-3 ; SPTCL ; TIMD3 ; Tim-3 ; TIMD-3 ; HAVcr-2 |
| Observed Band | 80kD |
| Calculated Molecular Weight | 33kD |
| Cell Pathway | Membrane ; Single-pass type I membrane protein . Cell junction . Cell membrane . Localizes to the immunological synapse between CD8+ T-cells and target cells. . |
| Tissue Specificity | Expressed in T-helper type 1 (Th1) lymphocytes. Expressed on regulatory T (Treg) cells after TCR stimulation. Expressed in dendritic cells and natural killer (NK) cells. Expressed in epithelial tissues. Expression is increased on CD4+ and CD8+ T-cells in chronic hepatitis C virus (HCV) infection. In progressive HIV-1 infection, expression is up-regulated on HIV-1-specific CD8 T-cells. |
| Function | Disease:Genetic variation in HAVCR2 may influence susceptibility to rheumatoid arthritis (RA) [MIM:180300]. RA is an inflammatory disease, primarily of the joints, with autoimmune features and a complex genetic component. It is characterized by inflammation of synovial tissues and the formation of rheumatoid pannus, which is capable of eroding adjacent cartilage and bone, causing subsequent joint destruction. .Function:Regulates macrophage activation. Inhibits T-helper type 1 lymphocyte (Th1)-mediated auto- and alloimmune responses and promotes immunological tolerance. May be also involved in T-cell homing. Receptor for LGALS9. .similarity:Belongs to the immunoglobulin superfamily. TIM |





family.,similarity:Contains 1 Ig-like V-type (immunoglobulin-like) domain.,tissue specificity:T-helper type 1 lymphocyte (Th1)-specific.,

Background

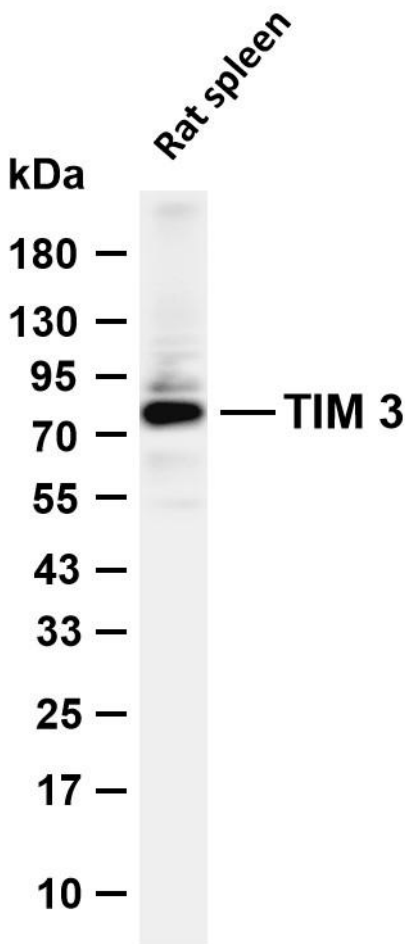
The protein encoded by this gene belongs to the immunoglobulin superfamily, and TIM family of proteins. CD4-positive T helper lymphocytes can be divided into types 1 (Th1) and 2 (Th2) on the basis of their cytokine secretion patterns. Th1 cells are involved in cell-mediated immunity to intracellular pathogens and delayed-type hypersensitivity reactions, whereas, Th2 cells are involved in the control of extracellular helminthic infections and the promotion of atopic and allergic diseases. This protein is a Th1-specific cell surface protein that regulates macrophage activation, and inhibits Th1-mediated auto- and alloimmune responses, and promotes immunological tolerance. [provided by RefSeq, Sep 2011],

matters needing attention

Avoid repeated freezing and thawing!

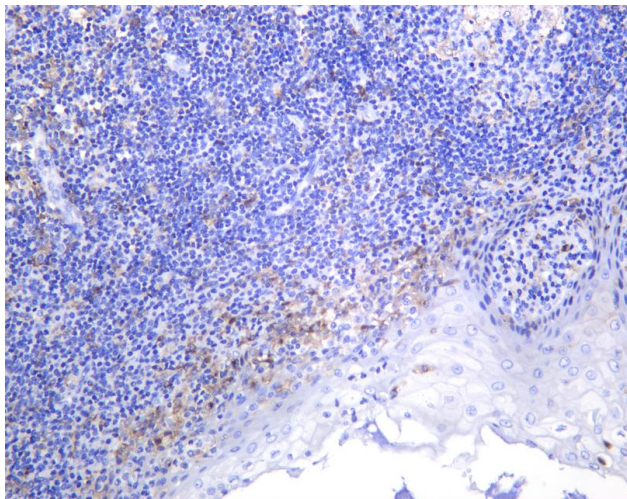
Usage suggestions

This product can be used in immunological reaction related experiments. For more information, please consult technical personnel.



Various whole cell lysates were separated by 4-20% SDS-PAGE, and the membrane was blotted with anti-TIM 3 antibody. The HRP-conjugated Goat anti-Rabbit IgG (H + L) antibody was used to detect the antibody. Lane 1: Rat spleen Predicted band size: 33kDa Observed band size: 80kDa





Human tonsil was stained with anti-TIM 3 Rabbit antibody

杭州臻优品生物科技有限公司

热销产品:

蛋白、一抗、抗体对、ELISA试剂盒、生化试剂盒
CCK8试剂盒、QPCR检测试剂盒

检测服务:

ELISA检测及定制服务 | 生化检测 | PCR、QPCR检测 | WB检测
ICO-IP检测 | 切片 | 染色 | 免疫组化 | 免疫荧光 | 透射电镜全套
| 宏基因组、转录组、基因组、蛋白组、代谢组测序



关注官网



关注客服