



RB1CC1 Rabbit mAb

Catalog No	YP-rAb-17046
Isotype	IgG
Reactivity	Human,Mouse
Applications	WB,IF,IP,ELISA
Gene Name	RB1CC1 KIAA0203 RBICC
Protein Name	RB1-inducible coiled-coil protein 1 (FAK family kinase-interacting protein of 200 kDa) (FIP200)
Purification Process	Protein A
Specificity	Endogenous
Formulation	PBS, 50% glycerol, 0.05% Proclin 300, 0.05%BSA
Source	Monoclonal, Rabbit,IgG
Dilution	WB 1:2000-1:10000; IF 1:200-1:1000; ELISA 1:5000-1:20000; IP 1:50-1:200;
Concentration	0.5 mg/ml
Purity	≥90%
Storage Stability	-15° C to -25° C/1 year(Do not lower than -25° C)
Synonyms	
Observed Band	220kD
Calculated Molecular Weight	183kD
Cell Pathway	Nucleus . Cytoplasm . Cytoplasm, cytosol . Preautophagosomal structure . Lysosome . Under starvation conditions, is localized to punctate structures primarily representing the isolation membrane that sequesters a portion of the cytoplasm resulting in the formation of an autophagosome. .
Tissue Specificity	Expression levels correlated closely with those of RB1 in cancer cell lines as well as in various normal human tissues. Abundantly expressed in human musculoskeletal and cultured osteosarcoma cells.
Function	Involved in autophagy . Regulates early events but also late events of autophagosome formation through direct interaction with Atg16L1 . Required for the formation of the autophagosome-like double-membrane structure that surrounds the Salmonella-containing vacuole (SCV) during S.typhimurium infection and subsequent xenophagy (By similarity). Involved in repair of DNA damage caused by ionizing radiation, which subsequently improves cell survival by decreasing apoptosis (By similarity). Inhibits PTK2/FAK1 and PTK2B/PYK2 kinase activity, affecting their downstream signaling pathways . Plays a role as a modulator of TGF-beta-signaling by restricting substrate specificity of RNF111 (By similarity). Functions as a DNA-binding transcription factor . Is a potent regulator

杭州臻优品生物科技有限公司

热销产品:

蛋白、一抗、抗体对、ELISA试剂盒、生化试剂盒
CCK8试剂盒、QPCR检测试剂盒

检测服务:

ELISA检测及定制服务 | 生化检测 | PCR、QPCR检测 | WB检测
ICO-IP检测 | 切片 | 染色 | 免疫组化 | 免疫荧光 | 透射电镜全套
| 宏基因组、转录组、基因组、蛋白组、代谢组测序



关注官网



关注客服



of the RB1 pathway through induction of RB1 expression . Plays a crucial role in muscular differentiation . Plays an indispensable role in fetal hematopoiesis and in the regulation of neuronal homeostasis (By similarity).

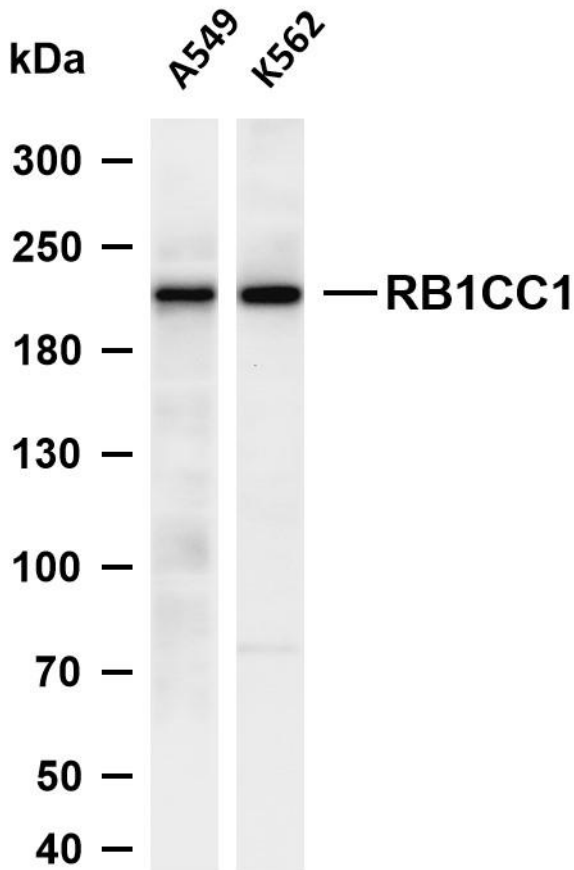
Background

matters needing attention

Avoid repeated freezing and thawing!

Usage suggestions

This product can be used in immunological reaction related experiments. For more information, please consult technical personnel.



Various whole cell lysates were separated by 4-8% SDS-PAGE, and the membrane was blotted with anti-RB1CC1 antibody. The HRP-conjugated Goat anti-Rabbit IgG (H + L) antibody was used to detect the antibody. Lane 1: A549 Lane 2: K562 Predicted band size: 183kDa Observed band size: 220kDa

