



TIMP1 Rabbit mAb

Catalog No	YP-rAb-17032
Isotype	IgG
Reactivity	Mouse
Applications	WB,IF,ELISA
Gene Name	TIMP1
Protein Name	Metalloproteinase inhibitor 1
Purification Process	Protein A
Specificity	Endogenous
Formulation	PBS, 50% glycerol, 0.05% Proclin 300, 0.05%BSA
Source	Monoclonal, Rabbit,IgG
Dilution	WB 1:500-1:2000; IF 1:200-1:1000; ELISA 1:5000-1:20000;
Concentration	0.5 mg/ml
Purity	≥90%
Storage Stability	-15° C to -25° C/1 year(Do not lower than -25° C)
Synonyms	TIMP1 ; CLGI ; TIMP ; Metalloproteinase inhibitor 1 ; Erythroid-potentiating activity ; EPA ; Fibroblast collagenase inhibitor ; Collagenase inhibitor ; Tissue inhibitor of metalloproteinases 1 ; TIMP-1
Observed Band	26kD
Calculated Molecular Weight	23kD
Cell Pathway	Secreted .
Tissue Specificity	Detected in rheumatoid synovial fluid (at protein level).
Function	Complexes with metalloproteinases (such as collagenases) and irreversibly inactivates them. Also mediates erythropoiesis in vitro; but, unlike IL-3, it is species-specific, stimulating the growth and differentiation of only human and murine erythroid progenitors. Known to act on MMP-1, MMP-2, MMP-3, MMP-7, MMP-8, MMP-9, MMP-10, MMP-11, MMP-12, MMP-13 and MMP-16. Does not act on MMP-14. PTM:The activity of TIMP1 is dependent on the presence of disulfide bonds. similarity:Belongs to the protease inhibitor I35 (TIMP) family. similarity:Contains 1 NTR domain.
Background	This gene belongs to the TIMP gene family. The proteins encoded by this gene family are natural inhibitors of the matrix metalloproteinases (MMPs), a group of





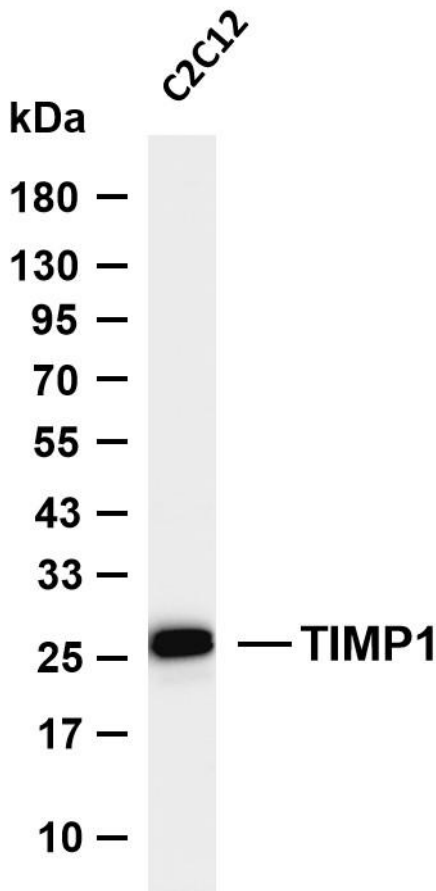
peptidases involved in degradation of the extracellular matrix. In addition to its inhibitory role against most of the known MMPs, the encoded protein is able to promote cell proliferation in a wide range of cell types, and may also have an anti-apoptotic function. Transcription of this gene is highly inducible in response to many cytokines and hormones. In addition, the expression from some but not all inactive X chromosomes suggests that this gene inactivation is polymorphic in human females. This gene is located within intron 6 of the synapsin I gene and is transcribed in the opposite direction. [provided by RefSeq, Jul 2008],

matters needing attention

Avoid repeated freezing and thawing!

Usage suggestions

This product can be used in immunological reaction related experiments. For more information, please consult technical personnel.



Various whole cell lysates were separated by 4-20% SDS-PAGE, and the membrane was blotted with anti-TIMP1 antibody. The HRP-conjugated Goat anti-Rabbit IgG (H + L) antibody was used to detect the antibody. Lane 1: C2C12 Predicted band size: 23kDa Observed band size: 26kDa

