



CLEC7A Rabbit mAb

Catalog No	YP-rAb-17030
Isotype	IgG
Reactivity	Mouse,Rat
Applications	WB,IHC,IF,ELISA
Gene Name	CLEC7A BGR CLECSF12 DECTIN1 UNQ539/PRO1082
Protein Name	C-type lectin domain family 7 member A (Beta-glucan receptor) (C-type lectin superfamily member 12) (Dendritic cell-associated C-type lectin 1) (DC-associated C-type lectin 1) (Dectin-1)
Purification Process	Protein A
Specificity	Endogenous
Formulation	PBS, 50% glycerol, 0.05% Proclin 300, 0.05%BSA
Source	Monoclonal, Rabbit,IgG
Dilution	IHC 1:200-1:1000; WB 1:500-1:2000; IF 1:200-1:1000; ELISA 1:5000-1:20000; Note: For IHC, we suggest antigen retrieval with TE buffer pH 9.0
Concentration	0.5 mg/ml
Purity	≥90%
Storage Stability	-15° C to -25° C/1 year(Do not lower than -25° C)
Synonyms	
Observed Band	36,45kD
Calculated Molecular Weight	28kD
Cell Pathway	Cell membrane ; Single-pass type II membrane protein .; [Isoform 5]: Cytoplasm .; [Isoform 6]: Cytoplasm .; [Isoform 7]: Cytoplasm .
Tissue Specificity	Highly expressed in peripheral blood leukocytes and dendritic cells. Detected in spleen, bone marrow, lung, muscle, stomach and placenta.
Function	Lectin that functions as pattern receptor specific for beta-1,3-linked and beta-1,6-linked glucans, such as cell wall constituents from pathogenic bacteria and fungi. Necessary for the TLR2-mediated inflammatory response and for TLR2-mediated activation of NF-kappa-B. Enhances cytokine production in macrophages and dendritic cells. Mediates production of reactive oxygen species in the cell. Mediates phagocytosis of C.albicans conidia. Binds T-cells in a way that does not involve their surface glycans and plays a role in T-cell activation. Stimulates T-cell proliferation.,induction:Up-regulated during differentiation from monocytes into dendritic cells.,PTM:Phosphorylated on tyrosine residues in response to glucan binding.,similarity:Contains 1 C-type lectin domain.,subunit:Isoform 5 interacts with RANBP9.,tissue specificity:Highly





expressed in peripheral blood leukocytes and dendritic cells. Detected in spleen, bone marrow, lung, muscle, stomach and placenta.,

Background

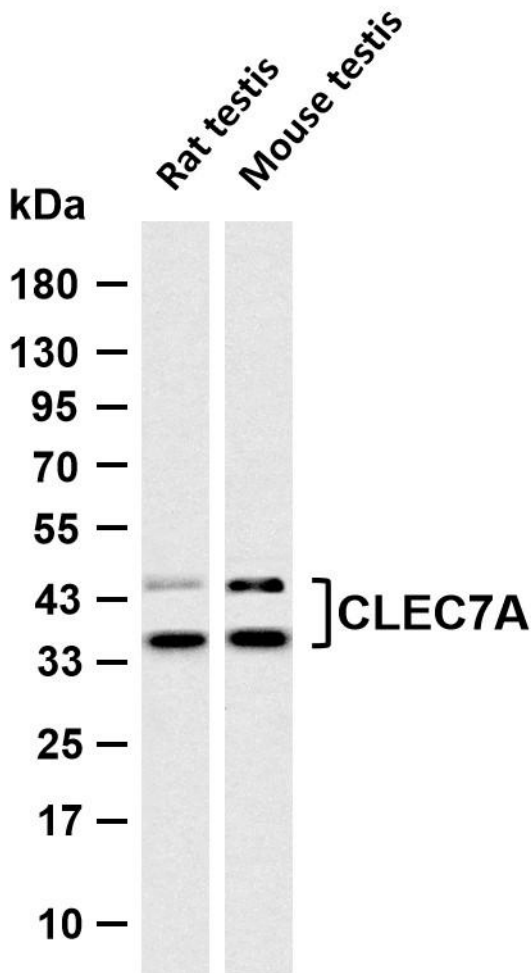
This gene encodes a member of the C-type lectin/C-type lectin-like domain (CTL/CTLD) superfamily. The encoded glycoprotein is a small type II membrane receptor with an extracellular C-type lectin-like domain fold and a cytoplasmic domain with an immunoreceptor tyrosine-based activation motif. It functions as a pattern-recognition receptor that recognizes a variety of beta-1,3-linked and beta-1,6-linked glucans from fungi and plants, and in this way plays a role in innate immune response. Alternate transcriptional splice variants, encoding different isoforms, have been characterized. This gene is closely linked to other CTL/CTLD superfamily members on chromosome 12p13 in the natural killer gene complex region. [provided by RefSeq, Jul 2008],

matters needing attention

Avoid repeated freezing and thawing!

Usage suggestions

This product can be used in immunological reaction related experiments. For more information, please consult technical personnel.



Various whole cell lysates were separated by 4-20% SDS-PAGE, and the membrane was blotted with anti-CLEC7A antibody. The HRP-conjugated Goat anti-Rabbit IgG (H + L) antibody was used to detect the antibody. Lane 1: Rat testis Lane 2: Mouse testis
Predicted band size: 28kDa Observed band size: 36,45kDa

