



FURIN Rabbit mAb

Catalog No	YP-rAb-17024
Isotype	IgG
Reactivity	Human,Mouse,Rat
Applications	WB,IHC,IF,ELISA
Gene Name	FURIN FUR PACE PCSK3
Protein Name	Furin (Dibasic-processing enzyme) (Paired basic amino acid residue-cleaving enzyme) (PACE)
Purification Process	Protein A
Specificity	Endogenous
Formulation	PBS, 50% glycerol, 0.05% Proclin 300, 0.05%BSA
Source	Monoclonal, Rabbit,IgG
Dilution	IHC 1:200-1:1000; WB 1:2000-1:10000; IF 1:200-1:1000; ELISA 1:5000-1:20000; Note: For IHC, we suggest antigen retrieval with TE buffer pH 9.0
Concentration	0.5 mg/ml
Purity	≥90%
Storage Stability	-15° C to -25° C/1 year(Do not lower than -25° C)
Synonyms	
Observed Band	87kD
Calculated Molecular Weight	87kD
Cell Pathway	Golgi apparatus, trans-Golgi network membrane ; Single-pass type I membrane protein . Cell membrane ; Single-pass type I membrane protein . Secreted . Endosome membrane ; Single-pass type I membrane protein . Shuttles between the trans-Golgi network and the cell surface (PubMed:9412467, PubMed:11799113). Propeptide cleavage is a prerequisite for exit of furin molecules out of the endoplasmic reticulum (ER). A second cleavage within the propeptide occurs in the trans Golgi network (TGN), followed by the release of the propeptide and the activation of furin (PubMed:11799113). .
Tissue Specificity	Seems to be expressed ubiquitously.
Function	Catalytic activity:Release of mature proteins from their proproteins by cleavage of -Arg-Xaa-Yaa-Arg- -Zaa- bonds, where Xaa can be any amino acid and Yaa is Arg or Lys. Releases albumin, complement component C3 and vWF from their respective precursors.,cofactor:Calcium.,Domain:Contains a cytoplasmic domain responsible for its TGN localization and recycling from the cell surface.,enzyme regulation:Could be inhibited by the not secondly cleaved propeptide.,Function:Furin is likely to represent the ubiquitous endoprotease

杭州臻优品生物科技有限公司

热销产品:

蛋白、一抗、抗体对、ELISA试剂盒、生化试剂盒
CCK8试剂盒、QPCR检测试剂盒

检测服务:

ELISA检测及定制服务 | 生化检测 | PCR、QPCR检测 | WB检测
ICO-IP检测 | 切片 | 染色 | 免疫组化 | 免疫荧光 | 透射电镜全套
| 宏基因组、转录组、基因组、蛋白组、代谢组测序



关注官网



关注客服



activity within constitutive secretory pathways and capable of cleavage at the RX(K/R)R consensus motif.,PTM:Phosphorylation is required for TGN localization of the endoprotease. In vivo, exists as di-, mono- and non-phosphorylated forms.,PTM:The inhibition peptide, which plays the role of an intramolecular chaperone, is autocatalytically removed in the endoplasmic reticulum (ER) and remains non-covalently bound to furin as a potent autoinhibitor. Following transport to the trans Golgi, a second cleavage within the inhibition propeptide results in propeptide dissociation and furin activation.,similarity:Belongs to the peptidase S8 family. Furin subfamily.,similarity:Contains 1 homo B/P domain.,subcellular location:Shuttles between the trans-Golgi network and the cell surface. Propeptide cleavage is a prerequisite for exit of furin molecules out of the endoplasmic reticulum (ER). A second cleavage within the propeptide occurs in the trans Golgi network (TGN), followed by the release of the propeptide and the activation of furin.,subunit:Interacts with FLNA (By similarity). Binds to PACS1 which mediates TGN localization and connection to clathrin adapters.,tissue specificity:Seems to be expressed ubiquitously.,

Background

This gene encodes a member of the subtilisin-like proprotein convertase family, which includes proteases that process protein and peptide precursors trafficking through regulated or constitutive branches of the secretory pathway. It encodes a type 1 membrane bound protease that is expressed in many tissues, including neuroendocrine, liver, gut, and brain. The encoded protein undergoes an initial autocatalytic processing event in the ER and then sorts to the trans-Golgi network through endosomes where a second autocatalytic event takes place and the catalytic activity is acquired. The product of this gene is one of the seven basic amino acid-specific members which cleave their substrates at single or paired basic residues. Some of its substrates include parathyroid hormone, transforming growth factor beta 1 precursor, proalbumin, pro-beta-secretase, membrane type-1 matrix m

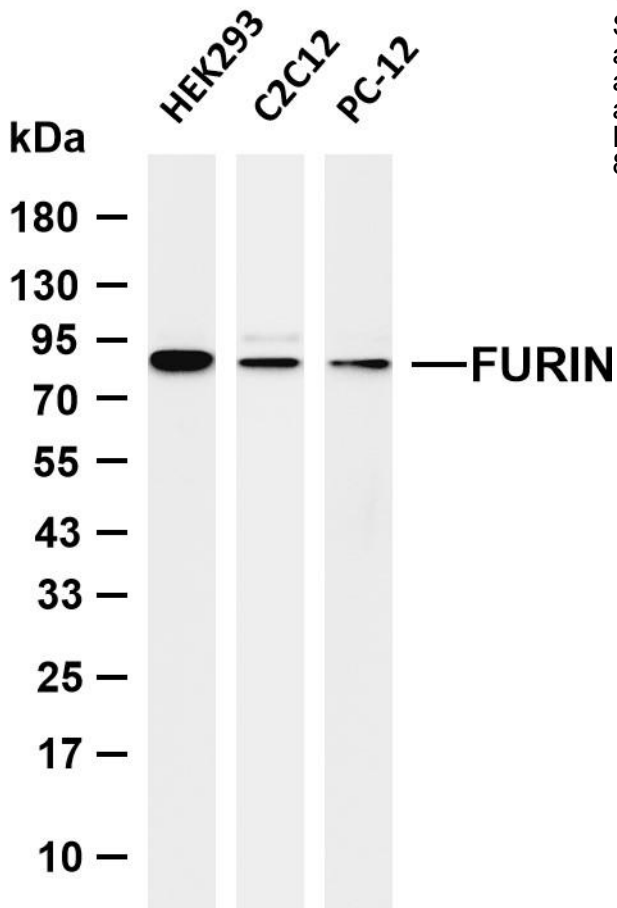
matters needing attention

Avoid repeated freezing and thawing!

Usage suggestions

This product can be used in immunological reaction related experiments. For more information, please consult technical personnel.





Various whole cell lysates were separated by 4-20% SDS-PAGE, and the membrane was blotted with anti-FURIN antibody. The HRP-conjugated Goat anti-Rabbit IgG (H + L) antibody was used to detect the antibody. Lane 1: HEK293 Lane 2: C2C12 Lane 2: PC-12 Predicted band size: 87kDa Observed band size: 87kDa

杭州臻优品生物科技有限公司

热销产品:

蛋白、一抗、抗体对、ELISA试剂盒、生化试剂盒
CCK8试剂盒、QPCR检测试剂盒

检测服务:

ELISA检测及定制服务 | 生化检测 | PCR、QPCR检测 | WB检测
ICO-IP检测 | 切片 | 染色 | 免疫组化 | 免疫荧光 | 透射电镜全套
| 宏基因组、转录组、基因组、蛋白组、代谢组测序



关注官网



关注客服